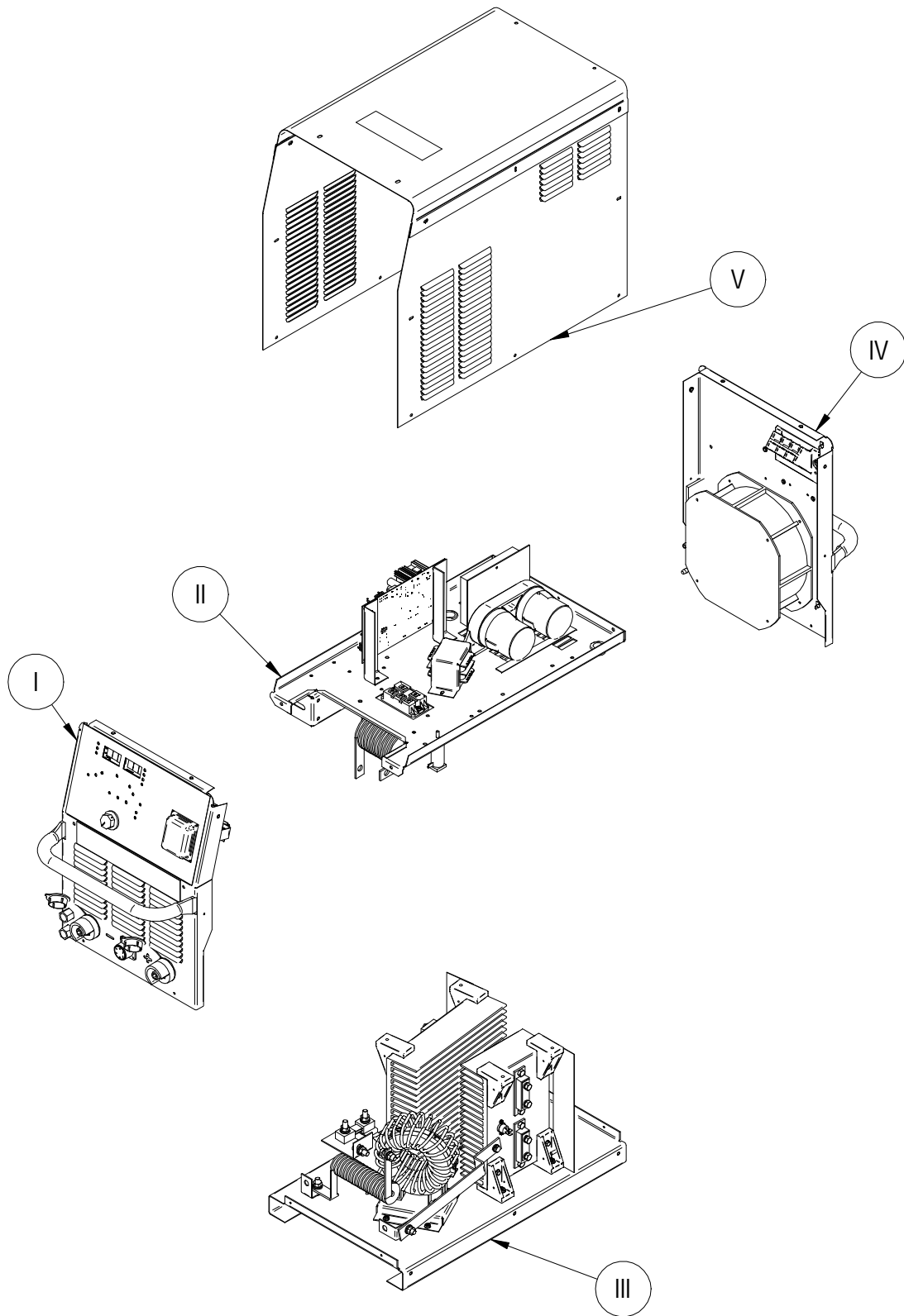


PARTS LIST FOR INVERTEC® CC400-T



ILLUSTRATION OF SUB-ASSEMBLIES



INVERTEC® CC400-T

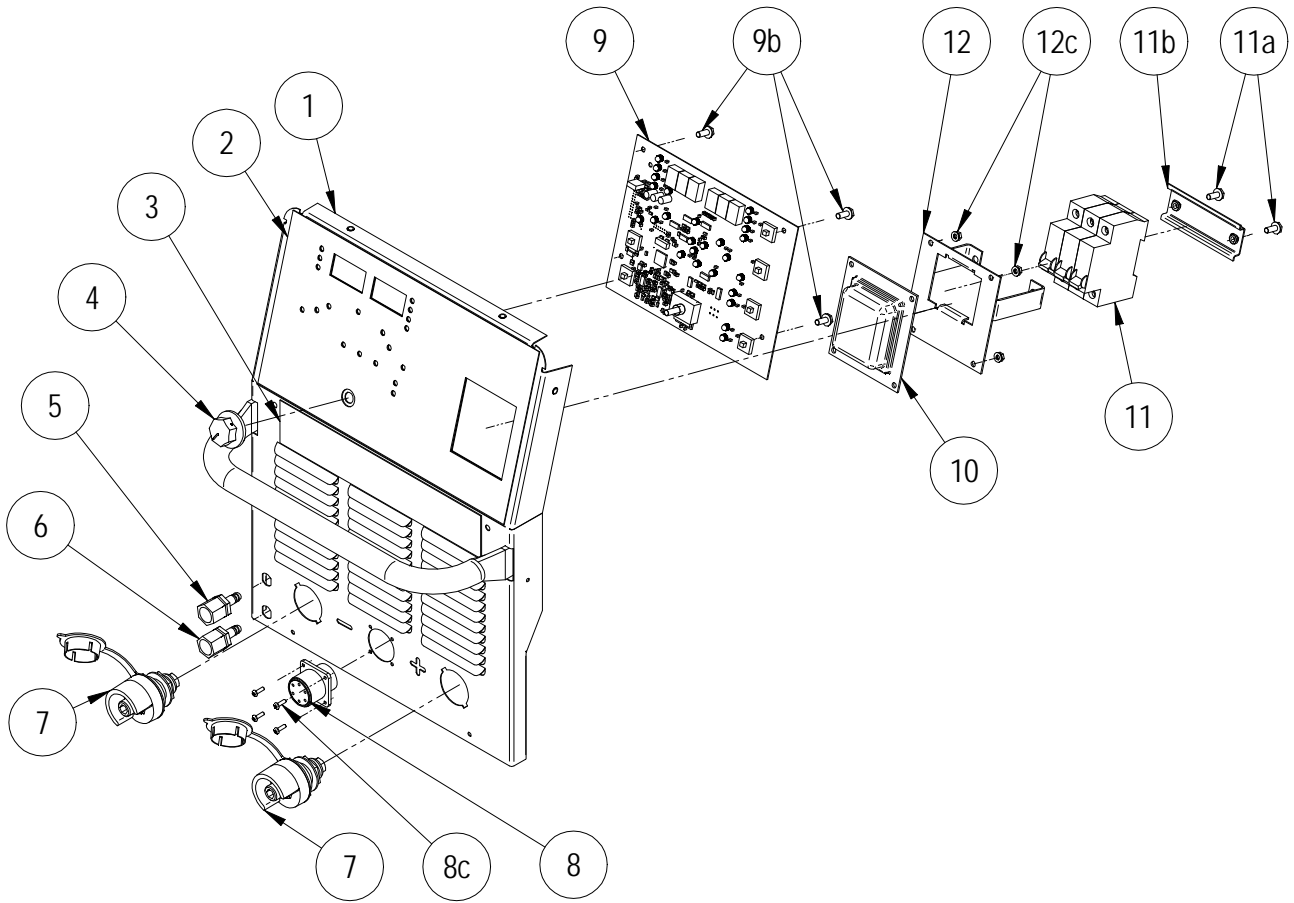
For code: 76211

Do Not use this Parts List for a machine if its code number is not listed. For any code numbers not listed, contact the Service Department via: china_service@lincolnelectric.com.

Use the Illustration of Sub-Assemblies page and the table below to determine which sub assembly page and column the desired part is located on for your particular code machine.

SUB ASSEMBLY ITEM NO. →	I	II	III	IV	V
SUB ASSEMBLY PAGE NAME →	Case Front Assembly	Divider Panel Assembly	Base & Center Assembly	Case Back Assembly	Wraparound Assembly
PAGE NO. →	PB-1	PC-1	PD-1	PE-1	PF-1
CODE NO. ↓					
76211	1	1	1	1	1

Illustration of Sub Assemblies



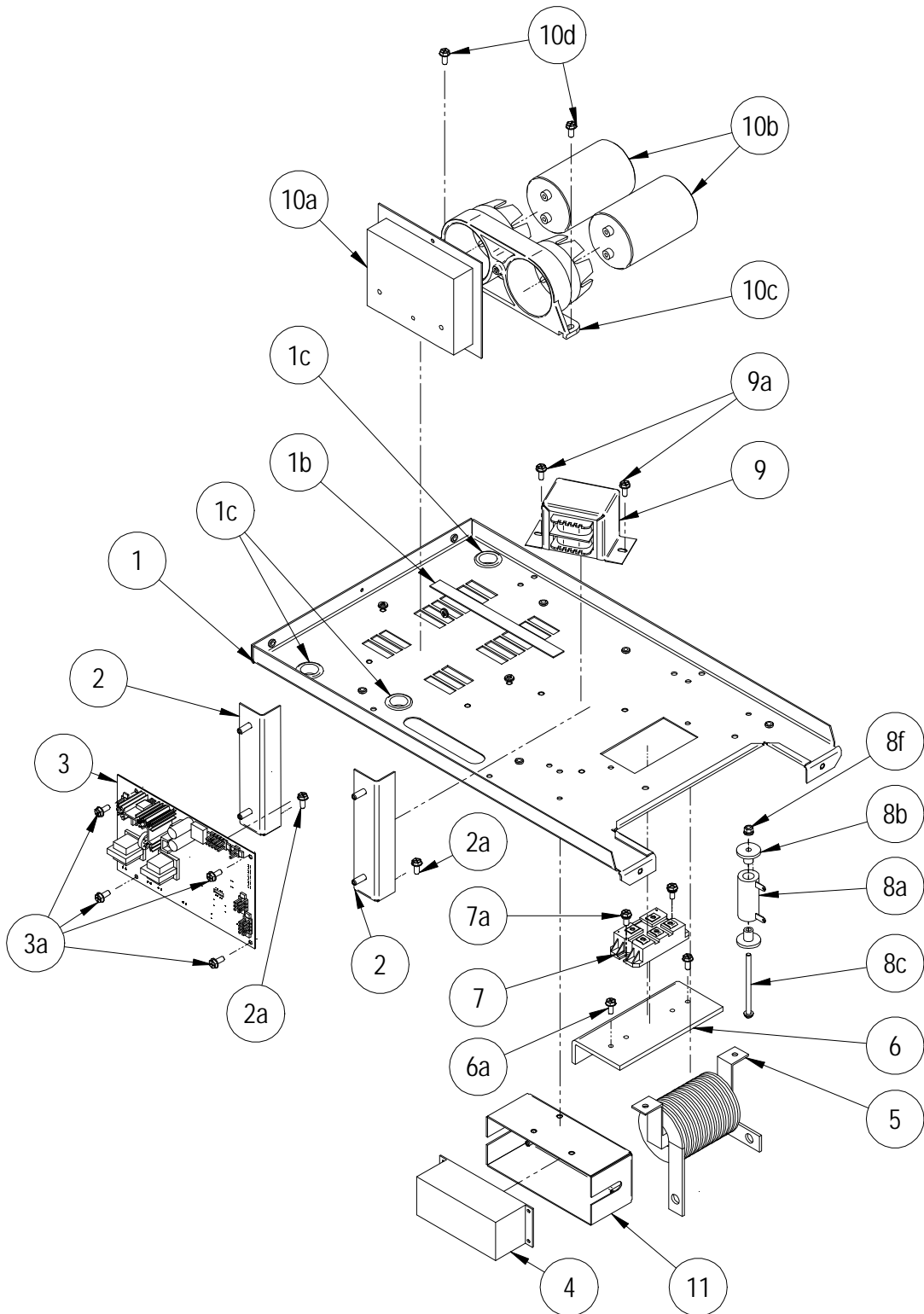
INVERTEC® CC400-T



ITEM	DESCRIPTION	PART NO.	QTY.	1						76211	1
1	Case Front Welded Assembly	G7713-1	1	X							
1a	ST4.8x13 Hex Self Tapping Screw (Not Shown)	S26738-2	2	X							
2	Control Panel Decal	G6082-30	1	X							
3	CC400-T Decal	G6082-32	1	X							
4	Knob	T10491-7	1	X							
5	Water Nozzle Assembly, Includes:	S26912-10	1	X							
5a	Water Hose Nipple	NSS	1	X							
5b	M12 Lock Washer (Not Shown)	NSS	1	X							
5c	M12 Hex Nut (Not Shown)	NSS	1	X							
6	Gas Nozzle Assembly, Includes:	S26912-9	1	X							
6a	Gas Hose Nipple	NSS	1	X							
6b	M12 Lock Washer (Not Shown)	NSS	1	X							
6c	M12 Hex Nut (Not Shown)	NSS	1	X							
7	Female Twist Mates Assembly	M22415-10	2	X							
8	Remote Harness Assembly – J3, Includes:	G6043-38	1	X							
8a	6 Pin Connector	S28574-1	1	X							
8b	Toroidal Core (Not Shown)	S19316-3	3	X							
8c	M3x10 Pan Head Philips Screw	S26641-11	4	X							
8d	M3 Plain Washer (Not Shown)	S26638-1	4	X							
8e	M3 Lock Washer (Not Shown)	S26639-1	4	X							
8f	M3 Hex Nut (Not Shown)	S26640-1	4	X							
9	Control Board Assembly	S29845	1	X							
9a	Button Cap (Not Shown)	S28768-X-1	5	X							
9b	M4x10 Combined Screw	S28798-3	4	X							
10	Switch Cover	S27281	1	X							
11	Line Switch	S27016	1	X							
11a	M5x12 Combined Screw	S28798-4	2	X							
11b	Din Rail	S27200	1	X							
12	Switch Bracket	M21705	1	X							
12a	M4 Plain Washer (Not Shown)	S26638-2	4	X							
12b	M4 Lock Washer (Not Shown)	S26639-2	4	X							
12c	M4 Hex Nut	S26640-2	4	X							
13	Water/Gas Outlet Decal (Not Shown)	S26743-17	1	X							
14	Gas Hose (Not Shown)	E4306	490mm	X							
14a	Hose Clamp (Not Shown)	S26911	2	X							
15	Water Hose (Not Shown)	E4811	510mm	X							
15a	Hose Clamp (Not Shown)	S26911	2	X							

NOTE: Use only the parts marked "X" in the column under the heading number called for in the model index page.
NSS – Not Sold Separately

Index of Sub-Assemblies
Part Numbers
Index of Sub-Assemblies
Part Numbers
Index of Sub-Assemblies
Part Numbers
Index of Sub-Assemblies
Part Numbers



ITEM	DESCRIPTION	PART NO.	QTY.	1					76211	1
1	Divider Panel	G7715	1	X						
1a	M5x12 Hex Washer Head Philips Screw (Not Shown)	S26641-4	4	X						
1b	EVA Foam Piece	E4714-1	180mm	X						
1c	Bushing	T12380-4	3	X						
2	PCB Bracket	L13173-6	2	X						
2a	M5x12 Combined Screw	S28798-4	2	X						
3	Drive Board	G7710-1	1	X						
3a	M4x10 Combined Screw	S28798-3	4	X						
3b	Control Harness – J10 (Not Shown)	G6043-40	1	X						
4	HF Board Assembly	G7975-1	1	X						
4a	M4x10 Combined Screw (Not Shown)	S28798-3	4	X						
5	Choke	M25155-1	1	X						
5a	M6x12 Combined Screw (Not Shown)	S28798-10	2	X						
6	Input Rectifier Heatsink	M21756-11	1	X						
6a	M5x12 Combined Screw	S28798-4	2	X						
7	Input Rectifier	M15454-21	1	X						
7a	M5x16 Screw	S28798-5	2	X						
7b	Input MOV Assembly (Not Shown)	S27147-2	1	X						
8	Output Resistor and Leads Assembly, Includes:	S27175-1	1	X						
8a	Resistor	M20716-3	1	X						
8b	Spacer	S26157	2	X						
8c	M5x76 Hex Washer Head Screw	S26641-20	1	X						
8d	M5 Plain Washer (Not Shown)	S26638-3	1	X						
8e	M5 Lock Washer (Not Shown)	S26639-3	1	X						
8f	M5 Hex Nut	S26640-3	1	X						
9	Auxiliary Transformer	M21437-15	1	X						
9a	M5x12 Combined Screw	S28798-4	2	X						
9b	Aux-Transformer Harness – J1 (Not Shown)	G6043-39	1	X						
10	Pre-charge and Capacitor Assembly, Includes:	M22737-1	1	X						
10a	Pre-charge Board	G6811-1	1	X						
10b	Electrolytic Capacitors	S28782-2	2	X						
10c	Capacitor Bracket	M24711	1	X						
10d	M5x16 Combined Screw	S28798-5	2	X						
10e	M6 Plain Washer (Not Shown)	S26638-8	2	X						
11	Mini PCB Box	M24919-1	1	X						
11a	Grommet Strip (Not Shown)	S26951-1	180mm	X						
11b	M5x12 Combined Screw (Not Shown)	S28798-4	3	X						

NOTE: Use only the parts marked "X" in the column under the heading number called for in the model index page.

Index of Sub-Assemblies

Part Numbers

Index of Sub Assemblies

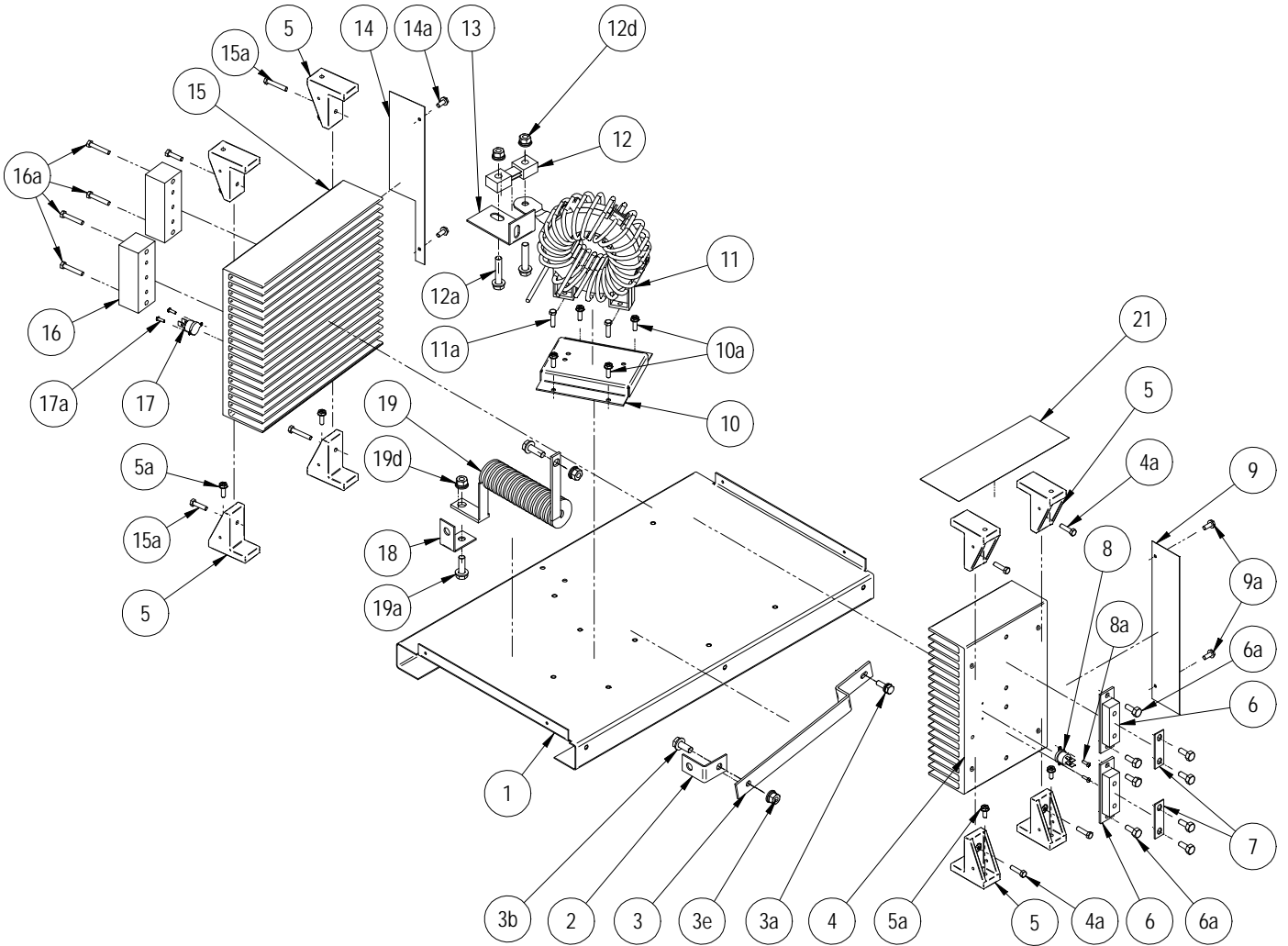
Part Numbers

Index of Sub Assemblies

Part Numbers

Index of Sub Assemblies

Part Numbers



ITEM	DESCRIPTION	PART NO.	QTY.	1						76211	1
1	Base	G7716	1	X							
2	Copper Strap	S27092-8	1	X							
3	Aluminum Bar	M24930	1	X							
3a	M6x16 Combined Screw	S28798-7	1	X							
3b	M8x25 Hex Head Screw	S26641-8	1	X							
3c	M8 Plain Washer (Not Shown)	S26638-4	2	X							
3d	M8 Lock Washer (Not Shown)	S26639-4	1	X							
3e	M8 Hex Nut	S26640-4	1	X							
4	Output Rectifier Heatsink	M24710-12	1	X							
4a	M5x20 Combined Screw	S28798-12	4	X							
5	Heatsink Support	M24920	8	X							
5a	M5x20 Combined Screw	S28798-12	8	X							
6	Output Diode	M15454-20	2	X							
6a	M6x16 Combined Screw	S28798-7	4	X							
6b	Electrical Joint Compound (Not Shown)	NSS		X							
7	Reconnect Panel Link	T14190-1	2	X							
8	Thermostat	T13359-26	1	X							
8a	M3x10 Combined Screw	S28798-6	2	X							
9	Wind Shield (Output)	M25150-4	1	X							
9a	AST4.2x13 Self Tapping Screw	S26738-6	2	X							
10	Transformer Bracket	M21756-12	1	X							
10a	M5x12 Combined Screw	S28798-4	4	X							
11	Main Transformer	L15759-2	1	X							
11a	M5x16 Combined Screw	S28798-5	4	X							
11b	M5 Plain Washer (Not Shown)	S26638-3	4	X							
11c	M5 Lock Washer (Not Shown)	S26639-3	4	X							
11d	M5 Hex Nut (Not Shown)	S26640-3	4	X							
11e	Ferrite Core (Not Shown)	S28558-7	4	X							
11f	Ferrite Core (Not Shown)	S28558-5	2	X							
12	Shunt	S26194-2	1	X							
12a	M8x40 Hex Head Screw	S26641-9	2	X							
12b	M8 Plain Washer (Not Shown)	S26638-4	4	X							
12c	M8 Lock Washer (Not Shown)	S26639-4	2	X							
12d	M8 Hex Nut	S26640-4	2	X							
12e	Shunt Harness (Not Shown), Includes:	G7307-5A	1	X							
12f	Toroidal Core (Not Shown)	S19316-3	1	X							
13	Copper Strap	S27092-20	1	X							
13a	M8x25 Hex Head Screw (Not Shown)	S26641-8	1	X							
13b	M8 Plain Washer (Not Shown)	S26638-4	2	X							
13c	M8 Lock Washer (Not Shown)	S26639-4	1	X							
13d	M8 Hex Nut (Not Shown)	S26640-4	1	X							
14	Wind Shield (IGBT)	M25150-3	1	X							
14a	AST4.2x13 Self Tapping Screw	S26738-6	2	X							
15	IGBT Heatsink	M24710-13	1	X							
15a	M5x20 Combined Screw	S28798-12	4	X							
See next page for more.											

NOTE: Use only the parts marked "X" in the column under the heading number called for in the model index page.
NSS – Not Sold Separately

Index of Sub-Assemblies
 Sub Assembly Illustration
 Index of Sub-Assemblies
 Sub Assembly Illustration
 Index of Sub-Assemblies
 Sub Assembly Illustration
 Index of Sub-Assemblies
 Sub Assembly Illustration

(Continued)

ITEM	DESCRIPTION	PART NO.	QTY.	1					76211	1
16	IGBT MOUDLE (MAGNACHIP)	M22734-4	2	X						
16a	M6x16 Combined Screw	S28798-7	4	X						
16b	Electrical Joint Compound (Not Shown)	NSS		X						
16c	IGBT Module Snubber Assembly (Not Shown)	S27012-5	2	X						
17	Thermostat	T13359-26	1	X						
17a	M3x10 Combined Screw	S28798-6	2	X						
18	Copper Strap	S27092-8	1	X						
19	Arc Start Coil	M25155-2	1	X						
19a	M8x25 Hex Head Screw	S26641-8	2	X						
19b	M8 Plain Washer (Not Shown)	S26638-4	4	X						
19c	M8 Lock Washer (Not Shown)	S26639-4	2	X						
19d	M8 Hex Nut	S26640-4	2	X						
20	Output MOV Assembly (Not Shown)	S27147-6	1	X						
21	Insulation Paper	E4450-11	0.2m	X						

NOTE: Use only the parts marked "X" in the column under the heading number called for in the model index page.
NSS – Not Sold Separately

Index of Sub-Assemblies
 Sub Assembly Illustration
 Index of Sub-Assemblies
 Sub Assembly Illustration
 Index of Sub-Assemblies
 Sub Assembly Illustration
 Index of Sub-Assemblies
 Sub Assembly Illustration

Index of Sub-Assemblies

Part Numbers

Index of Sub-Assemblies

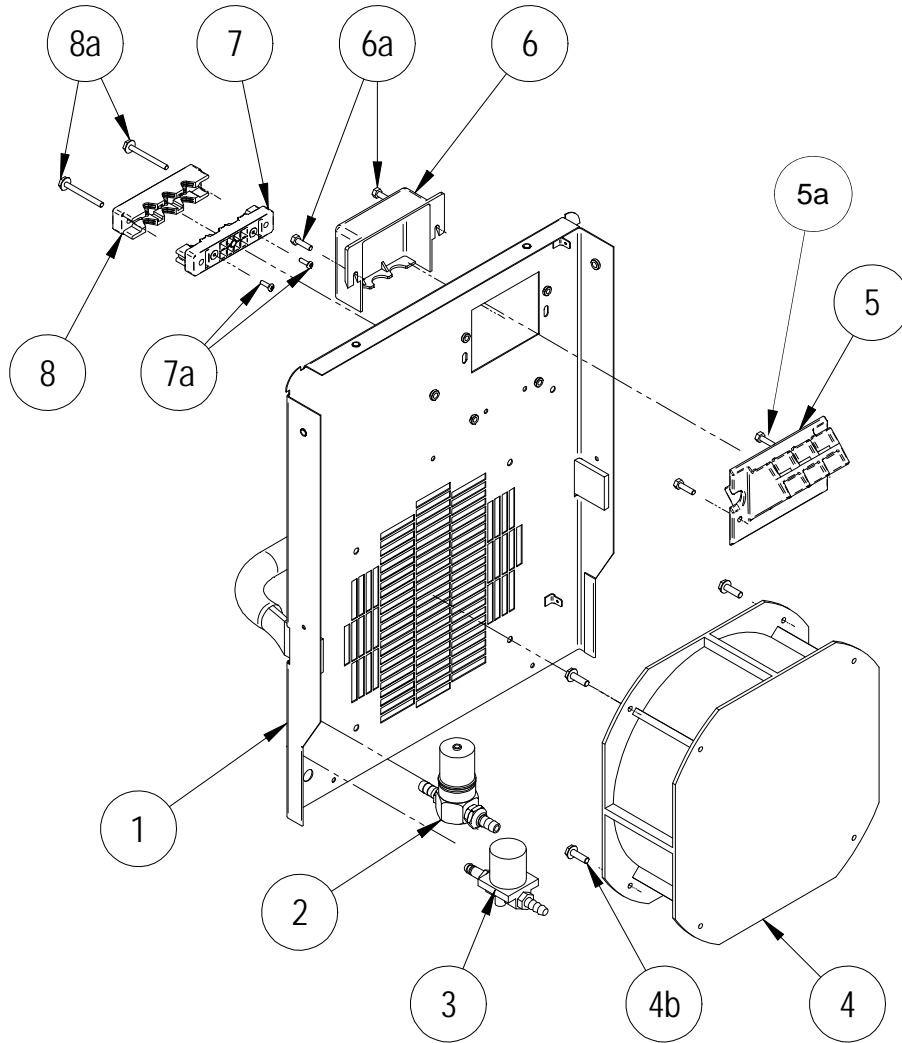
Part Numbers

Index of Sub-Assemblies

Part Numbers

Index of Sub-Assemblies

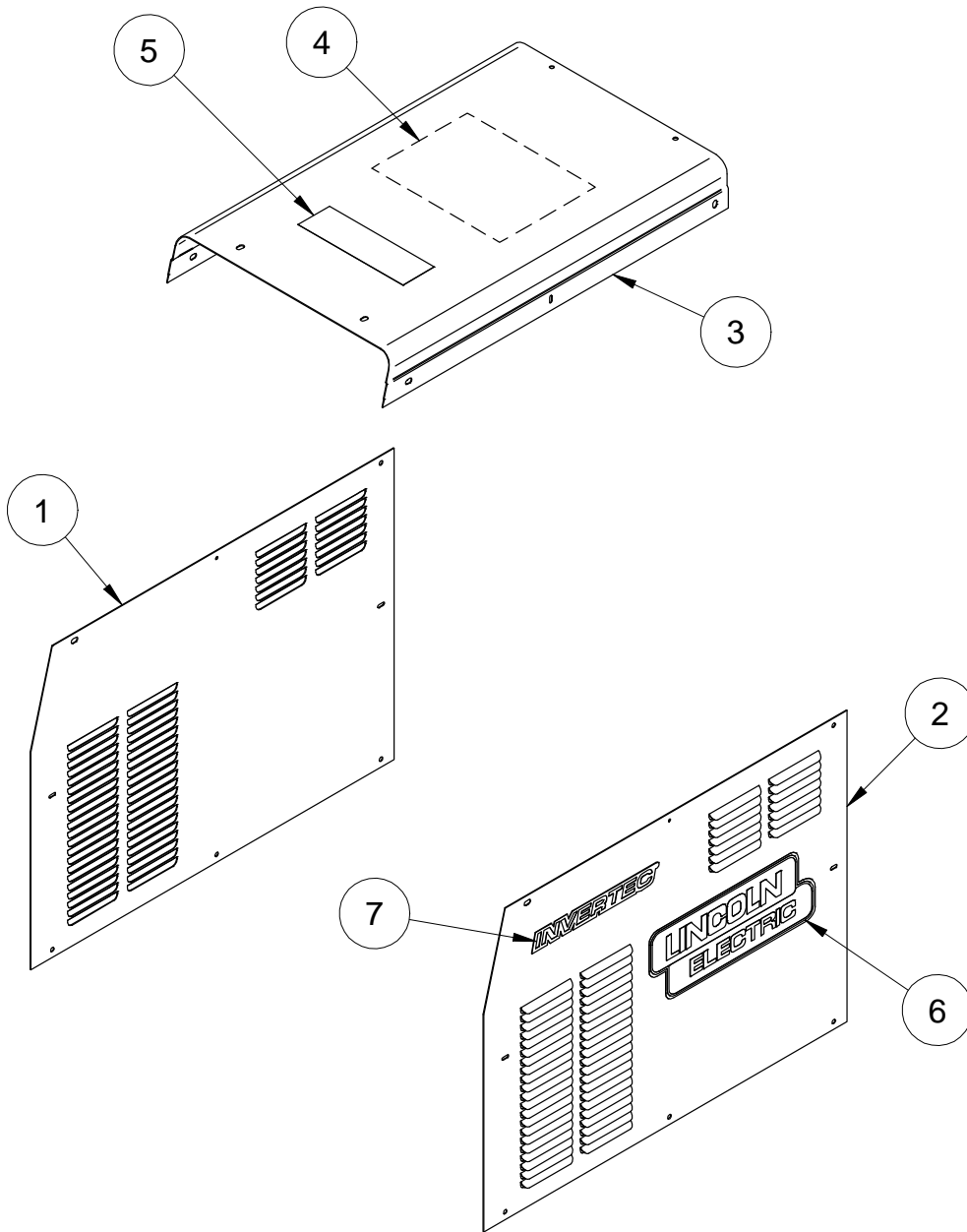
Part Numbers



ITEM	DESCRIPTION	PART NO.	QTY.	1						76211	1
1	Case Back Welded Assembly	G7714	1	X							
1a	ST4.8x13 Hex Self Tapping Screw (Not Shown)	S26738-2	2	X							
2	Pressure Valve	M22042-4	1	X							
3	Solenoid Valve	M22042-3	1	X							
4	Fan, Includes:	M22731-4	1	X							
4a	Fan Capacitor (Not Shown)	M22731-4-B	1	X							
4b	M5x20 Hex Head Screw	S26641-5	4	X							
4c	M6 Plain Washer (Not Shown)	S26638-8	8	X							
4d	M5 Lock Washer (Not Shown)	S26639-3	4	X							
4e	M5 Hex Nut (Not Shown)	S26640-3	4	X							
4f	Fan Power Harness (Not Shown)	G7307-9	1	X							
5	Input Cable Bracket	M20720-6	1	X							
5a	M4x16 Hex Head Screw	S26641-2	2	X							
5b	M4 Plain Washer (Not Shown)	S26638-2	4	X							
5c	M4 Lock Washer (Not Shown)	S26639-2	2	X							
5d	M4 Hex Nut (Not Shown)	S26640-2	2	X							
5e	Input Snubber Assembly (Not Shown)	S26781-2	1	X							
6	Input Supply Box	M20720-2	1	X							
6a	M4x30 Hex Head Screw	S26641-3	2	X							
6b	M4 Plain Washer (Not Shown)	S26638-2	2	X							
6c	M4 Lock Washer (Not Shown)	S26639-2	2	X							
7	Input Holder Base	M20720-5	1	X							
7a	M3x10 Combined Screw	S28798-6	2	X							
8	Input Holder Cover	M20720-4	1	X							
8a	M4x30 Hex Head Screw	S26641-3	2	X							
9	Ground Decal (Not Shown)	S26732	1	X							
10	Input Connection Decal (Not Shown)	S26724-1	1	X							
11	Terminal Size 6 - 10 (Not Shown)	S26740-22	3	X							
12	Water/Gas Inlet Decal (Not Shown)	S26743-16	1	X							

NOTE: Use only the parts marked "X" in the column under the heading number called for in the model index page.

Index of Sub Assemblies
 Sub Assembly Illustration
 Index of Sub Assemblies
 Sub Assembly Illustration
 Index of Sub Assemblies
 Sub Assembly Illustration
 Index of Sub Assemblies
 Sub Assembly Illustration



ITEM	DESCRIPTION	PART NO.	QTY.	1						76211	1
1	Left Case Side	G5879-1	1	X							
1a	M5x12 Hex Washer Head Philips Screw (Not Shown)	S26641-4	3	X							
1b	ST4.8x13 Hex Self Tapping Screw (Not Shown)	S26738-2	2	X							
2	Right Case Side	G5880-3	1	X							
2a	M5x12 Hex Washer Head Philips Screw (Not Shown)	S26641-4	3	X							
2b	ST4.8x13 Hex Self Tapping Screw (Not Shown)	S26738-2	2	X							
3	Case Top	G5878-1	1	X							
3a	M5x12 Hex Washer Head Philips Screw (Not Shown)	S26641-4	8	X							
3b	ST4.8x13 Hex Self Tapping Screw (Not Shown)	S26738-2	2	X							
4	Wiring Diagram	NSS	1	X							
5	Label – Case Top	M20952	1	X							
6	LE Logo	NSS	2	X							
7	INVERTEC Family Nameplate	NSS	2	X							

NOTE: Use only the parts marked "X" in the column under the heading number called for in the model index page.
NSS – Not Sold Separately

Index of Sub-Assemblies
 Sub Assembly Illustration
 Index of Sub-Assemblies
 Sub Assembly Illustration
 Index of Sub-Assemblies
 Sub Assembly Illustration
 Index of Sub-Assemblies
 Sub Assembly Illustration