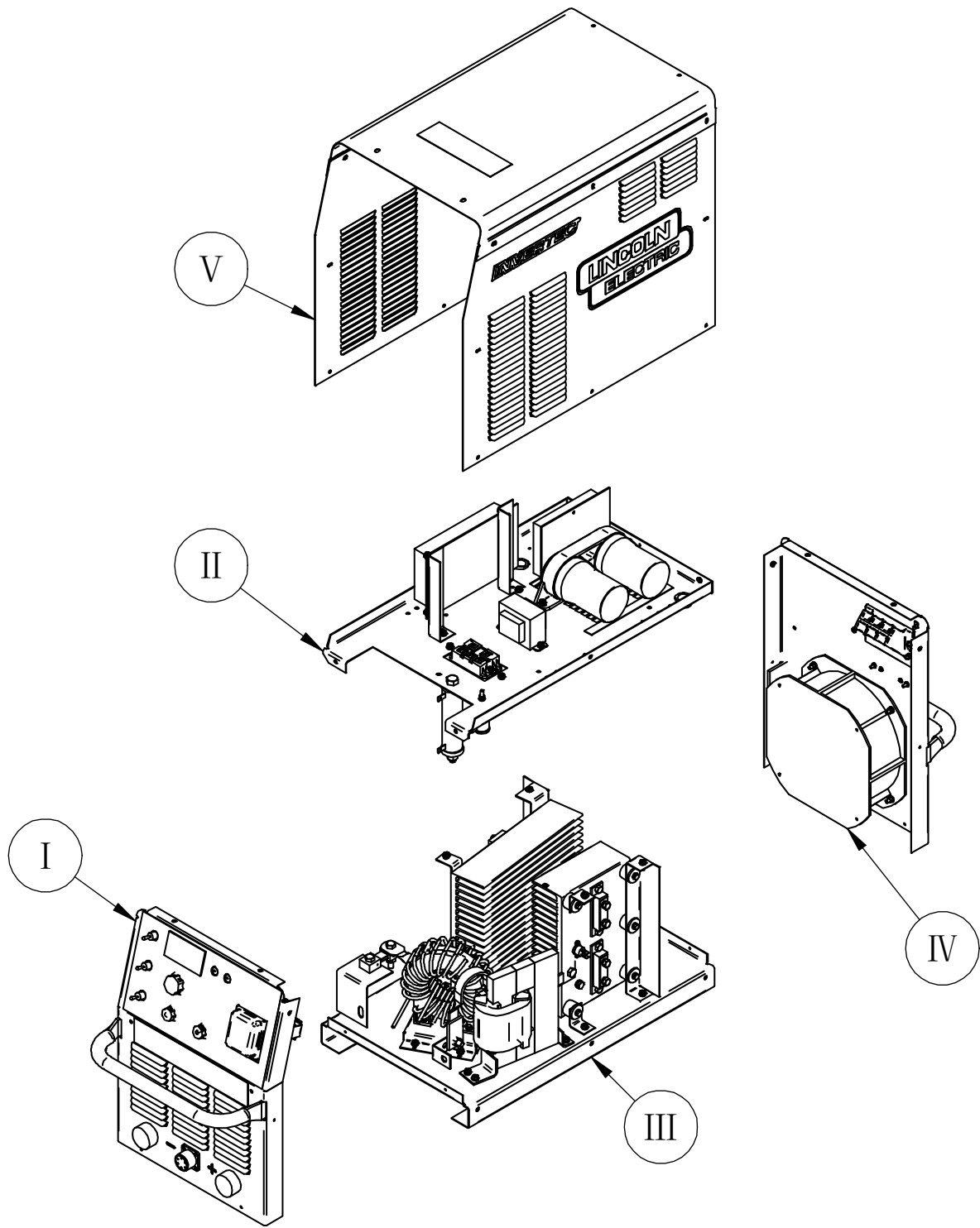


RETURN TO MAIN INDEX

PARTS LIST FOR INVERTEC® CC400-S PLUS



ILLUSTRATION OF SUB-ASSEMBLIES



INVERTEC® CC400-S PLUS



Index of Sub Assemblies
Index of Sub Assemblies
Index of Sub Assemblies

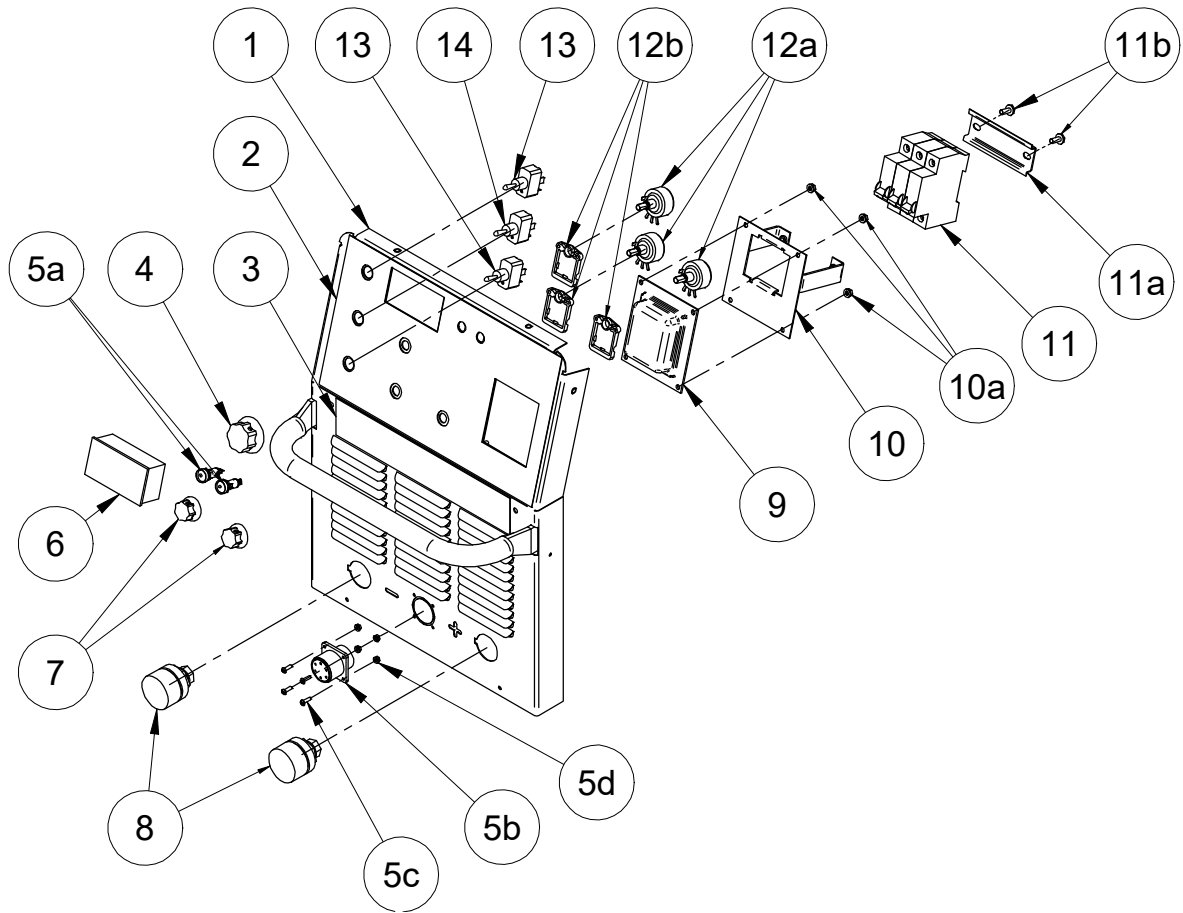
INVERTEC® CC400-S PLUS

For code: 76135, 76450

Do Not use this Parts List for a machine if its code number is not listed. For any code numbers not listed, contact the Service Department via: china_service@lincolnelectric.com.

Use the Illustration of Sub-Assemblies page and the table below to determine which sub assembly page and column the desired part is located on for your particular code machine.

SUB ASSEMBLY ITEM NO. →	I	II	III	IV	V
SUB ASSEMBLY PAGE NAME →	Case Front Assembly	Divider Panel Assembly	Base & Center Assembly	Case Back Assembly	Wraparound Assembly
PAGE NO. →	PB-1	PC-1	PD-1	PE-1	PF-1
CODE NO. ↓					
76135	1	1	1	1	1
76450	2	2	2	2	1



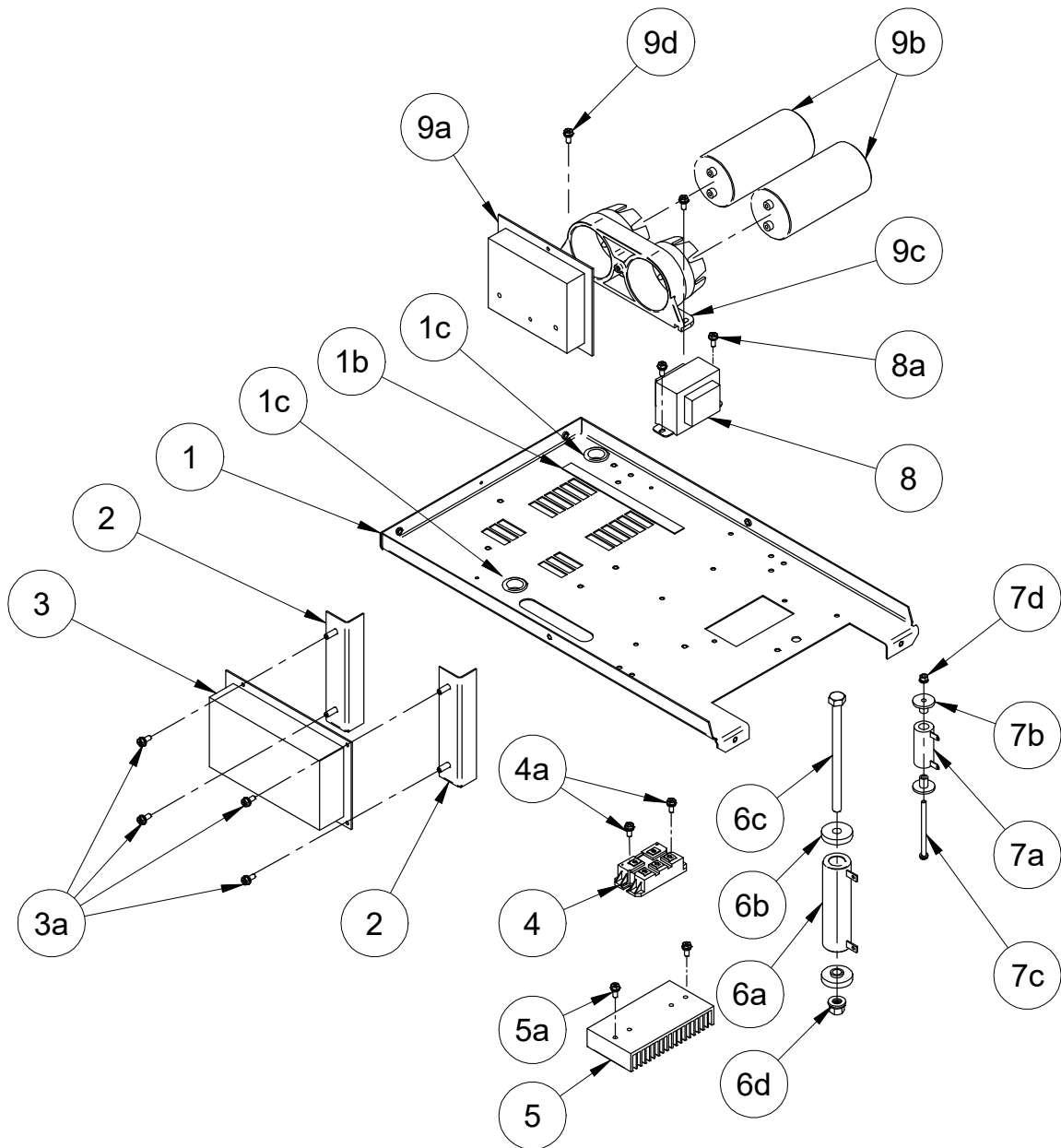
INVERTEC® CC400-S PLUS



ITEM	DESCRIPTION	PART NO.	QTY.	1	2					76135	1
1	Case Front Welded Assembly	G5874-5	1	X	X					76450	2
1a	ST4.8x13 Hex Self Tapping Screw (Not Shown)	S26738-2	2	X	X						
2	Control Panel Decal	G6082-17	1	X	X						
3	CC400-S PLUS Decal	G6082-20	1	X	X						
4	Knob	T10491-7	1	X	-						
4	Knob	S28748-8	1	-	X						
4a	O Ring (Not Shown)	T13483-34	1	X	X						
5	Remote, LED & Display Harness – J3, Includes:	G7307-1	1	X	X						
5a	Single Color (Yellow) LED	NSS	2	X	X						
5b	6 Pin Connector	S28574-1	1	X	X						
5c	M3x10 Pan Head Philips Screw	S26641-11	3	X	-						
5d	M3 Hex Nut	S26640-1	3	X	-						
5e	M3 Plain Washer (Not Shown)	S26638-1	3	X	-						
5f	M3 Lock Washer (Not Shown)	S26639-1	3	X	-						
5g	AST4.2x13 Self Tapping Screw	S26738-6	2	-	X						
6	Digital Display Meter	M22736	1	X	X						
7	Knob	T13639-6	2	X	-						
7	Knob	S28748-12	2	-	X						
7a	O Ring (Not Shown)	T13483-34	2	X	X						
8	Female Twist Mates Assembly	M22415-5	2	X	X						
9	Switch Cover	S27281	1	X	X						
10	Switch Bracket	M21705	1	X	X						
10a	M4 Hex Nut	S26640-2	4	X	X						
10b	M4 Plain Washer (Not Shown)	S26638-2	4	X	X						
10c	M4 Lock Washer (Not Shown)	S26639-2	4	X	X						
11	Line Switch	S27016	1	X	X						
11a	Din Rail	S27200	1	X	X						
11b	M5x12 Combined Screw	S28798-4	2	X	X						
12	Pot Harness – J4, Includes:	G7307-6	1	X	X						
12a	Potentiometer	T10812-127	3	X	X						
12b	Potentiometer Spacer	S18280	3	X	X						
13	Toggle Switch, DPST	T10800-47	2	X	X						
14	Toggle Switch, DPDT	T10800-36	1	X	X						

NOTE: Use only the parts marked "X" in the column under the heading number called for in the model index page.
NSS – Not Sold Separately

Index of Sub Assemblies
 Sub Assembly Illustration
 Index of Sub Assemblies
 Sub Assembly Illustration
 Index of Sub Assemblies
 Sub Assembly Illustration
 Index of Sub Assemblies
 Sub Assembly Illustration



INVERTEC® CC400-S PLUS



ITEM	DESCRIPTION	PART NO.	QTY.	1	2				76135	1
1	Divider Panel	G5926-9	1	X	X				76450	2
1a	M5x12 Hex Washer Head Philips Screw (Not Shown)	S26641-4	4	X	X					
1b	EVA Foam Piece	E4714-1	180mm	X	X					
1c	Bushing	T12380-4	2	X	X					
2	PCB Bracket	L13173-6	2	X	X					
2a	M5x12 Combined Screw	S28798-4	2	X	X					
3	Control Board Assembly	G6809-1	1	X	X					
3a	M4x10 Combined Screw (Not Shown)	S28798-3	4	X	X					
4	Input Rectifier	M15454-19	1	X	X					
4a	M5x16 Screw	S26641-36	2	X	X					
4b	M5 Plain Washer (Not Shown)	S26638-3	2	X	X					
4c	M5 Lock Washer (Not Shown)	S26639-3	2	X	X					
4d	Input MOV Assembly (Not Shown)	S27147-2	1	X	X					
5	Input Rectifier Heatsink	M20787-4	1	X	X					
5a	M5x12 Combined Screw	S28798-4	2	X	X					
6	Output Resistor and Leads Assembly, Includes:	S27175-2	1	X	X					
6a	Resistor	M20716-5	1	X	X					
6b	Spacer	S26787-4	2	X	X					
6c	M10 Bolt	S26185-3	1	X	X					
6d	M10 Hex Nut	S26640-6	1	X	X					
6e	M10 Plain Washer (Not Shown)	S26638-6	1	X	X					
6f	M10 Lock Washer (Not Shown)	S26639-6	1	X	X					
7	Output Resistor and Leads Assembly, Includes:	S27175-1	1	X	X					
7a	Resistor	M20716-3	1	X	X					
7b	Spacer	S26157	2	X	X					
7c	M5x76 Hex Washer Head Screw	S26641-20	1	X	X					
7d	M5 Hex Nut	S26640-3	1	X	X					
7e	M5 Plain Washer (Not Shown)	S26638-3	1	X	X					
7f	M5 Lock Washer (Not Shown)	S26639-3	1	X	X					
8	Auxiliary Transformer	M21437-9	1	X	-					
8	Auxiliary Transformer	M21437-9T	1	-	X					
8a	M4x10 Combined Screw	S28798-3	2	X	X					
8b	Aux-Transformer Harness – J1 (Not Shown)	G7307-3	1	X	X					
9	Pre-charge and Capacitor Assembly, Includes:	M22737-3	1	X	X					
9a	Pre-charge Board	G6811-1	1	X	X					
9b	Electrolytic Capacitors	S28782-3	2	X	X					
9c	Capacitor Bracket	M24711	1	X	X					
9d	M5x16 Combined Screw	S28798-5	2	X	X					
9e	M6 Plain Washer (Not Shown)	S26638-8	2	X	X					

NOTE: Use only the parts marked “X” in the column under the heading number called for in the model index page.

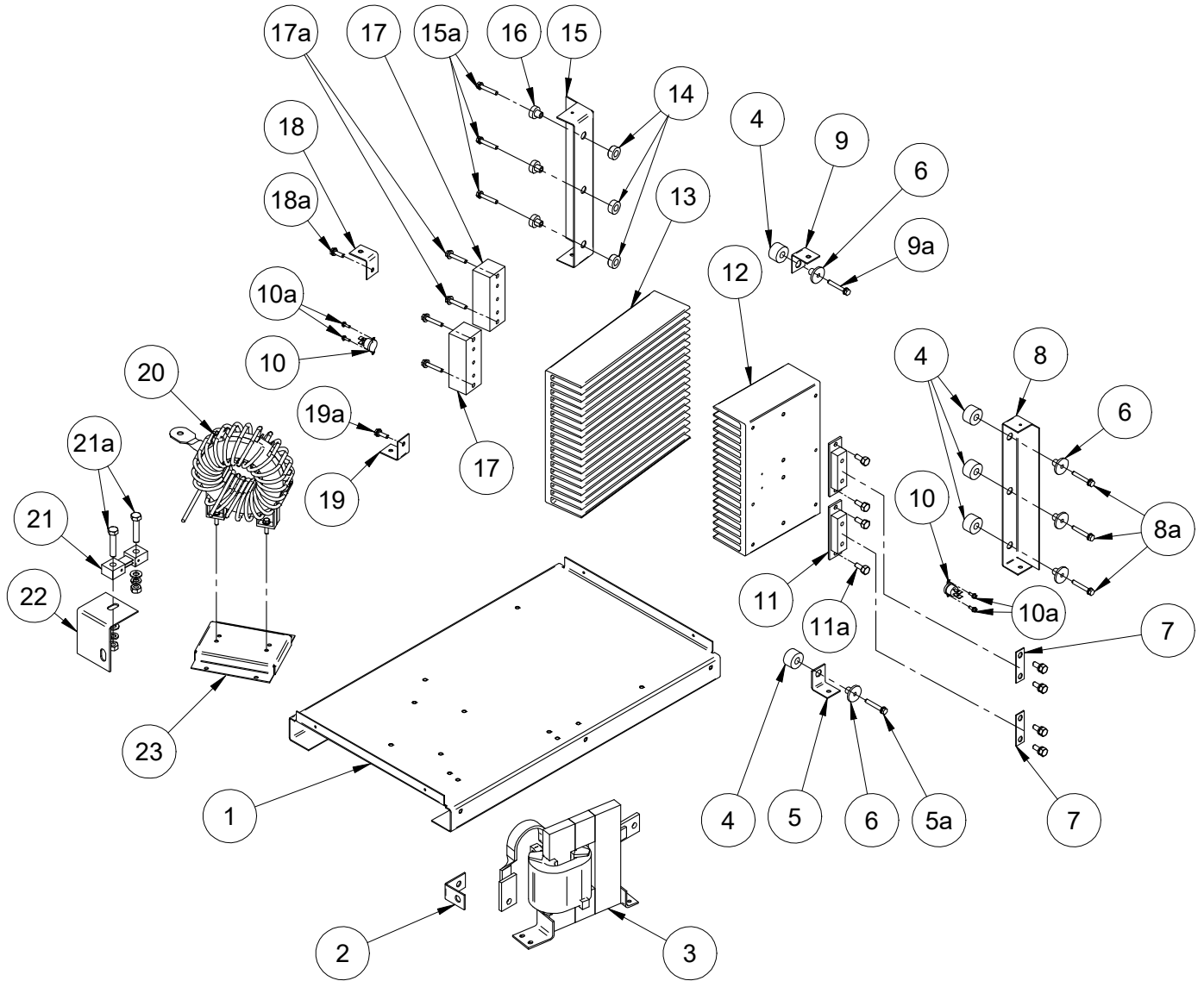
Index of Sub-Assemblies
 Sub Assembly Illustration
 Index of Sub-Assemblies
 Sub Assembly Illustration
 Index of Sub-Assemblies
 Sub Assembly Illustration
 Index of Sub-Assemblies
 Sub Assembly Illustration

Index of Sub-Assemblies
Part Numbers

Index of Sub-Assemblies
Part Numbers

Index of Sub-Assemblies
Part Numbers

Index of Sub-Assemblies
Part Numbers



INVERTEC® CC400-S PLUS



ITEM	DESCRIPTION	PART NO.	QTY.	1	2					76135	1
1	Base	G5872-2	1	X	X					76450	2
2	Copper Strap	S27092-8	1	X	X						
3	Choke Assembly	L13166-4	1	X	-						
3	Choke Assembly	L13166-4B	1	-	X						
3a	M5x16 Combined Screw	S28798-5	4	X	X						
3b	M6x16 Combined Screw (Not Shown)	S28798-7	1	X	X						
3c	M8x25 Hex Head Screw (Not Shown)	S26641-8	1	X	X						
3d	M8 Plain Washer (Not Shown)	S26638-4	2	X	X						
3e	M8 Lock Washer (Not Shown)	S26639-4	1	X	X						
3f	M8 Hex Nut (Not Shown)	S26640-4	1	X	X						
4	Spacer	S26158	5	X	X						
5	Heatsink Support	L13173-7	1	X	X						
5a	M5x30 Combined Screw	S28798-8	1	X	X						
5b	M5x12 Combined Screw (Not Shown)	S28798-4	1	X	X						
6	Spacer	S26157	5	X	X						
7	Reconnect Panel Link	T14190-1	2	X	X						
8	Heatsink Support	L13173-9	1	X	X						
8a	M5x30 Combined Screw	S28798-8	3	X	X						
8b	M5x12 Combined Screw (Not Shown)	S28798-4	1	X	X						
8c	ST4.8x13 Hex Self Tapping Screw (Not Shown)	S26738-2	1	X	X						
9	Heatsink Support	L13173-14	1	X	X						
9a	M5x30 Combined Screw	S28798-8	1	X	X						
9b	M5x12 Combined Screw (Not Shown)	S28798-4	1	X	X						
10	Thermostat	T13359-26	2	X	X						
10a	M3x10 Combined Screw	S28798-6	4	X	X						
11	Output Diode	M15454-20	2	X	X						
11a	M6x16 Combined Screw	S28798-7	4	X	X						
11b	Electrical Joint Compound (Not Shown)	NSS		X	X						
12	Output Rectifier Heatsink	M24710-1	1	X	X						
13	IGBT Heatsink	M24710-2	1	X	X						
14	Spacer A	S26178-1	3	X	X						
15	Heatsink Support	L13173-11	1	X	X						
15a	M5x30 Combined Screw	S28798-8	3	X	X						
15b	M5x12 Combined Screw (Not Shown)	S28798-4	1	X	X						
15c	ST4.8x13 Hex Self Tapping Screw (Not Shown)	S26738-2	1	X	X						
16	Spacer B	S26178-2	3	X	X						
17	IGBT MOUDLE	M22734-2	2	X	X						
17a	M6x16 Combined Screw	S28798-7	4	X	X						
17b	Electrical Joint Compound (Not Shown)	NSS		X	X						
17c	IGBT Module Snubber Assembly (Not Shown)	S27012-2	2	X	X						
18	Heatsink Support	L13173-13	1	X	X						
18a	M5x16 Combined Screw	S28798-5	1	X	X						
18b	M5x12 Combined Screw (Not Shown)	S28798-4	1	X	X						
19	Heatsink Support	L13173-12	1	X	X						
19a	M5x16 Combined Screw	S28798-5	1	X	X						
19b	M5x12 Combined Screw (Not Shown)	S28798-4	1	X	X						
See next page for more.											

NOTE: Use only the parts marked "X" in the column under the heading number called for in the model index page.
NSS – Not Sold Separately

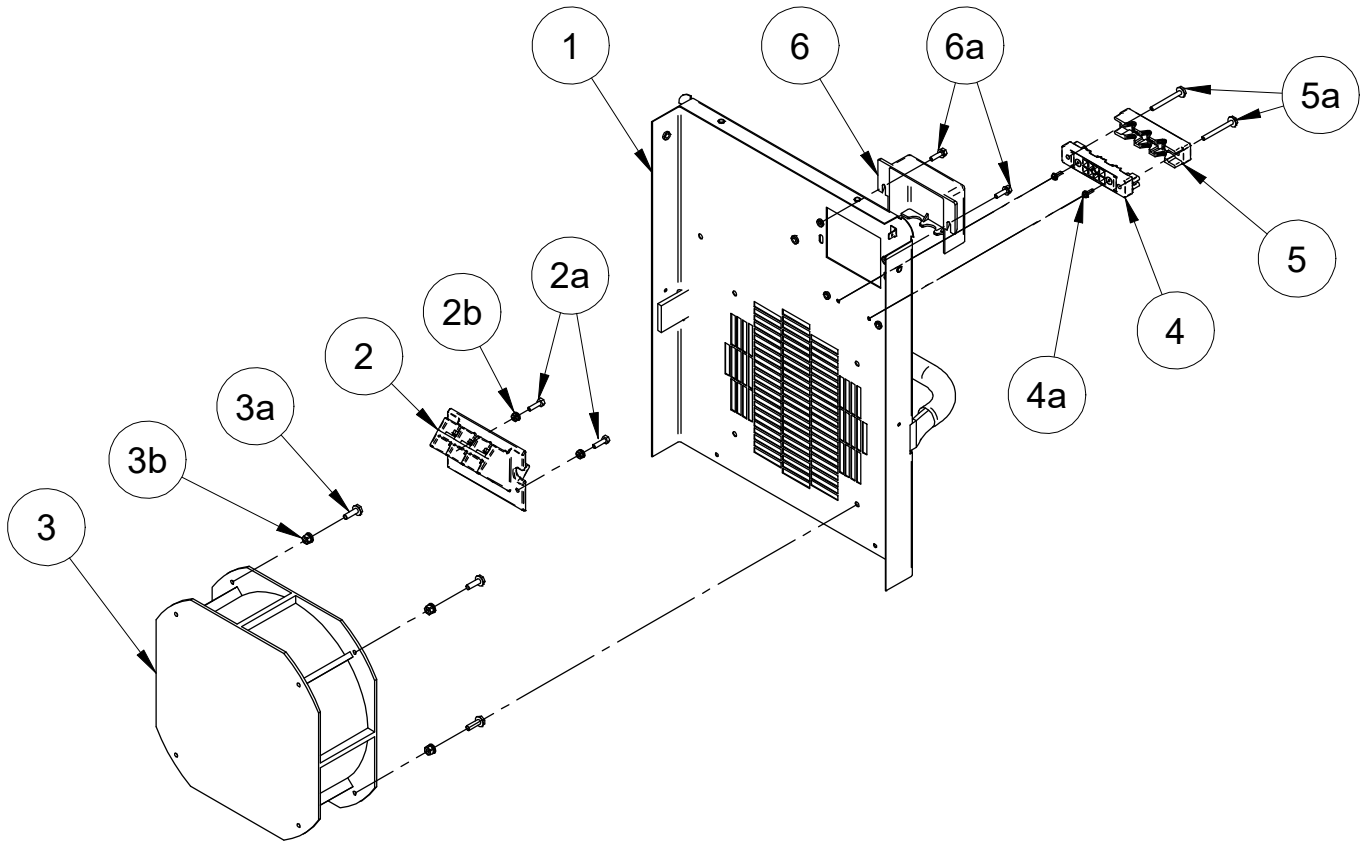
Index of Sub-Assemblies
 Sub Assembly Illustration
 Index of Sub-Assemblies
 Sub Assembly Illustration
 Index of Sub-Assemblies
 Sub Assembly Illustration
 Index of Sub-Assemblies
 Sub Assembly Illustration

(Continued)

ITEM	DESCRIPTION	PART NO.	QTY.	1	2				76135	1
20	Main Transformer	L15759-2	1	X	-				76450	2
20	Main Transformer	L15759-2B	1	-	X					
20a	M5x16 Combined Screw (Not Shown)	S28798-5	4	X	X					
20b	M5 Plain Washer (Not Shown)	S26638-3	4	X	X					
20c	M5 Lock Washer (Not Shown)	S26639-3	4	X	X					
20d	M5 Hex Nut (Not Shown)	S26640-3	4	X	X					
21	Shunt	S26194-2	1	X	X					
21a	M8x40 Hex Head Screw	S26641-9	2	X	X					
21b	M8 Plain Washer	S26638-4	4	X	X					
21c	M8 Lock Washer	S26639-4	2	X	X					
21d	M8 Hex Nut	S26640-4	2	X	X					
21e	Shunt Harness - J2 (Not Shown), Includes:	G7307-5A	1	X	X					
21f	Toroidal Core (Not Shown)	S19316-3	1	X	X					
22	Copper Strap	S27092-9	1	X	X					
23	Transformer Bracket	M21756-12	1	X	X					
23a	M5x12 Combined Screw (Not Shown)	S28798-4	4	X	X					
24	Output MOV Assembly (Not Shown)	S27147-3	1	X	X					
24a	M5x12 Hex Washer Head Philips Screw (Not Shown)	S26641-4	1	X	X					

NOTE: Use only the parts marked "X" in the column under the heading number called for in the model index page.

Index of Sub-Assemblies
 Sub Assembly Illustration
 Index of Sub Assemblies
 Sub Assembly Illustration
 Index of Sub Assemblies
 Sub Assembly Illustration
 Index of Sub Assemblies
 Sub Assembly Illustration



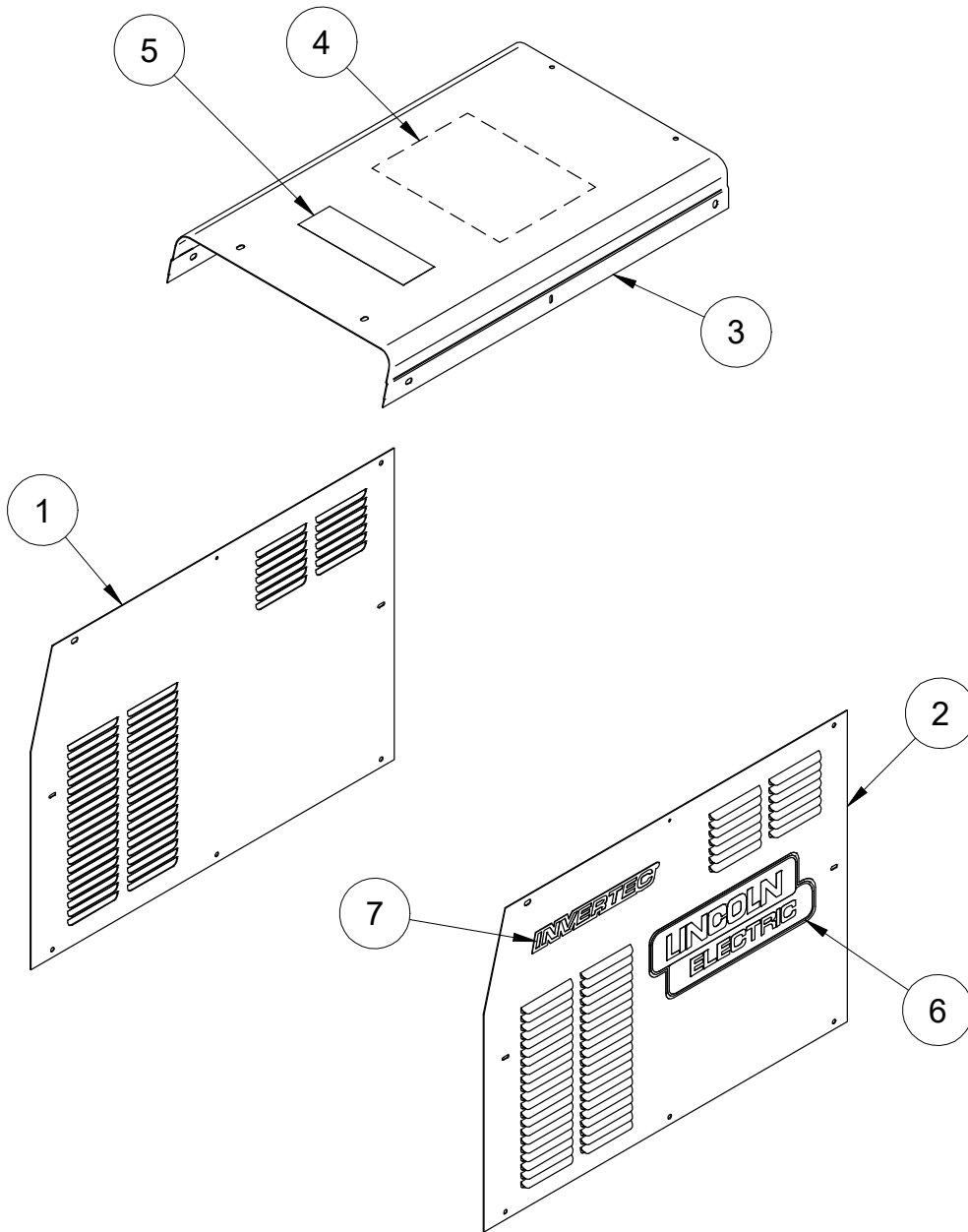
INVERTEC® CC400-S PLUS



ITEM	DESCRIPTION	PART NO.	QTY.	1	2					76135	1
1	Case Back Welded Assembly	G5873-5	1	X	-					76450	2
1	Case Back Welded Assembly	G7714	1	-	X						
1a	ST4.8x13 Hex Self Tapping Screw (Not Shown)	S26738-2	2	X	X						
2	Input Cable Bracket	M20720-6	1	X	X						
2a	M4x16 Hex Head Screw	S26641-2	2	X	-						
2a	M4x30 Hex Head Screw	S26641-3	2	-	X						
2b	M4 Hex Nut	S26640-2	2	X	X						
2c	M4 Plain Washer (Not Shown)	S26638-2	4	X	X						
2d	M4 Lock Washer (Not Shown)	S26639-2	2	X	X						
2e	Input Snubber Assembly (Not Shown)	S26781-2	1	X	X						
3	Fan, Includes:	M22731-2	1	X	X						
3-1c	Fan Capacitor (Not Shown)	M22731-2-B	1	X	X						
3a	M4x16 Hex Head Screw	S26641-2	4	X	-						
3a	M5x30 Hex Head Screw	S26641-6	4	-	X						
3b	M4 Hex Nut	S26640-2	4	X	-						
3b	M5 Hex Nut	S26640-3	4	-	X						
3c	M4 Plain Washer (Not Shown)	S26638-2	8	X	-						
3c	M5 Plain Washer (Not Shown)	S26638-3	8	-	X						
3d	M4 Lock Washer (Not Shown)	S26639-2	4	X	-						
3d	M5 Lock Washer (Not Shown)	S26639-3	4	-	X						
3e	Fan Power Harness (Not Shown)	G7307-8	1	X	-						
3e	Fan Power Harness (Not Shown)	G7307-9	1	-	X						
4	Input Holder Base	M20720-5	1	X	X						
4a	M3x10 Combined Screw	S28798-6	2	X	X						
5	Input Holder Cover	M20720-4	1	X	X						
5a	M4x30 Hex Head Screw	S26641-3	2	X	X						
6	Input Supply Box	M20720-2	1	X	X						
6a	M4x30 Hex Head Screw	S26641-3	2	X	X						
6b	M4 Plain Washer (Not Shown)	S26638-2	2	X	X						
6c	M4 Lock Washer (Not Shown)	S26639-2	2	X	X						
7	Ground Decal (Not Shown)	S26732	1	X	X						
8	Input Connection Decal (Not Shown)	S26724-1	1	X	X						
9	Terminal Size 6 - 10 (Not Shown)	S26740-22	3	X	X						

NOTE: Use only the parts marked "X" in the column under the heading number called for in the model index page.

Index of Sub Assemblies
 Sub Assembly Illustration
 Index of Sub Assemblies
 Sub Assembly Illustration
 Index of Sub Assemblies
 Sub Assembly Illustration
 Index of Sub Assemblies
 Sub Assembly Illustration



ITEM	DESCRIPTION	PART NO.	QTY.	1						76135	1
1	Left Case Side	G5879-1	1	X						76450	1
1a	M5x12 Hex Washer Head Philips Screw (Not Shown)	S26641-4	3	X							
1b	ST4.8x13 Hex Self Tapping Screw (Not Shown)	S26738-2	2	X							
2	Right Case Side	G5880-3	1	X							
2a	M5x12 Hex Washer Head Philips Screw (Not Shown)	S26641-4	3	X							
2b	ST4.8x13 Hex Self Tapping Screw (Not Shown)	S26738-2	2	X							
3	Case Top	G5878-1	1	X							
3a	M5x12 Hex Washer Head Philips Screw (Not Shown)	S26641-4	8	X							
3b	ST4.8x13 Hex Self Tapping Screw (Not Shown)	S26738-2	2	X							
4	Wiring Diagram	NSS	1	X							
5	Label – Case Top	M20952	1	X							
6	LE Logo	NSS	2	X							
7	INVERTEC Family Nameplate	NSS	2	X							

NOTE: Use only the parts marked “X” in the column under the heading number called for in the model index page.
NSS – Not Sold Separately

Index of Sub-Assemblies
 Sub Assembly Illustration
 Index of Sub-Assemblies
 Sub Assembly Illustration
 Index of Sub-Assemblies
 Sub Assembly Illustration
 Index of Sub-Assemblies
 Sub Assembly Illustration