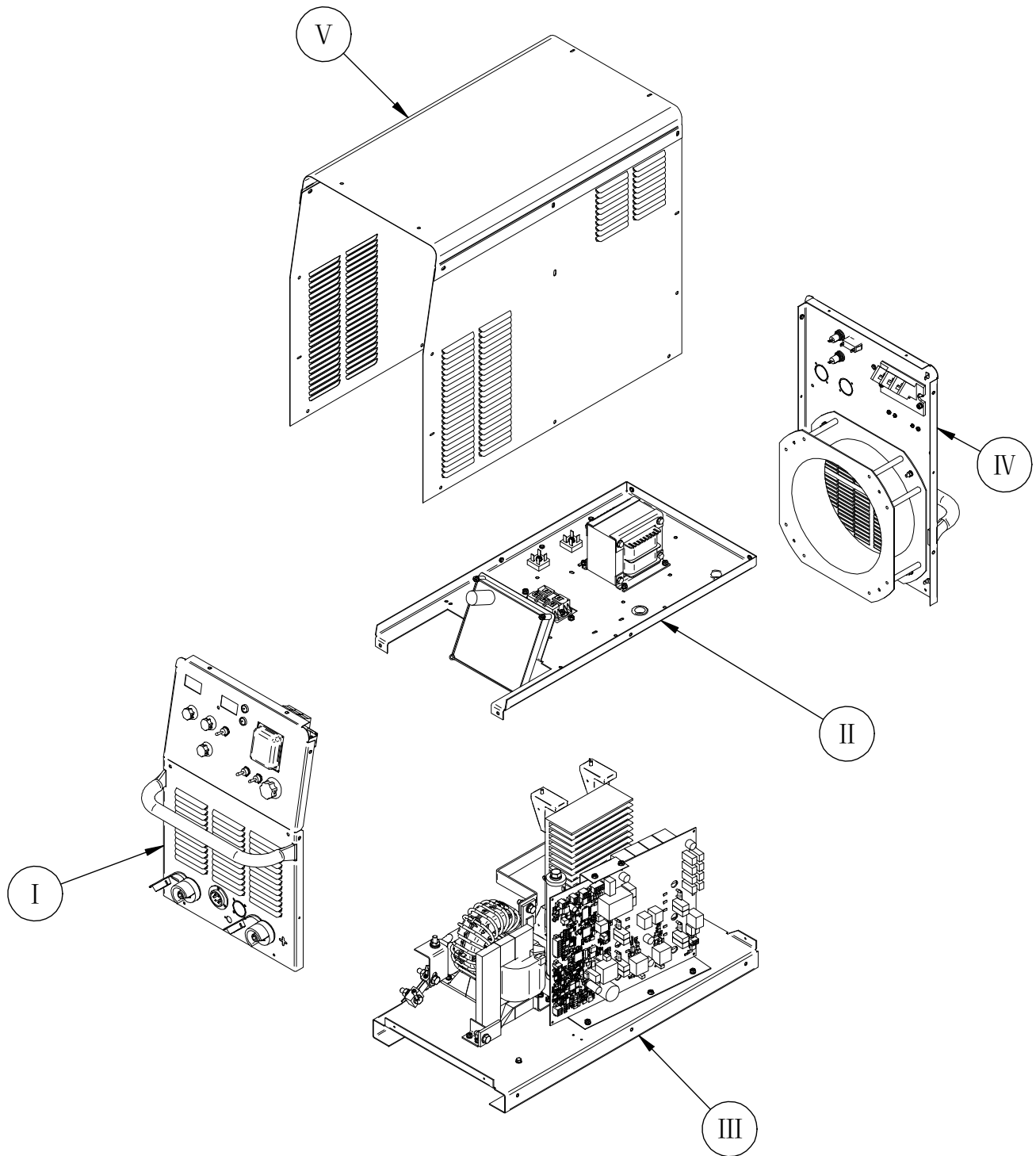


# PARTS LIST FOR OPTIMARC<sup>®</sup> CV355P



# ILLUSTRATION OF SUB-ASSEMBLIES



OPTIMARC® CV355P



Index of Sub Assemblies  
Index of Sub Assemblies  
Index of Sub Assemblies

## OPTIMARC® CV355P

### For code: 76457, 76458

Do Not use this Parts List for a machine if its code number is not listed. For any code numbers not listed, contact the Service Department via: [china\\_service@lincolnelectric.com](mailto:china_service@lincolnelectric.com).

Use the Illustration of Sub-Assemblies page and the table below to determine which sub assembly page and column the desired part is located on for your particular code machine.

SUB ASSEMBLY ITEM NO. →	I	II	III	IV	V
SUB ASSEMBLY PAGE NAME →	Case Front Assembly	Divider Panel Assembly	Base & Center Assembly	Case Back Assembly	Wraparound Assembly
PAGE NO. →	PB-1	PC-1	PD-1	PE-1	PF-1
CODE NO. ↓					
76457	1	1	1	1	1
76458	2	2	1	2	1

Illustration of Sub Assemblies

Index of Sub-Assemblies

Part Numbers

Index of Sub Assemblies

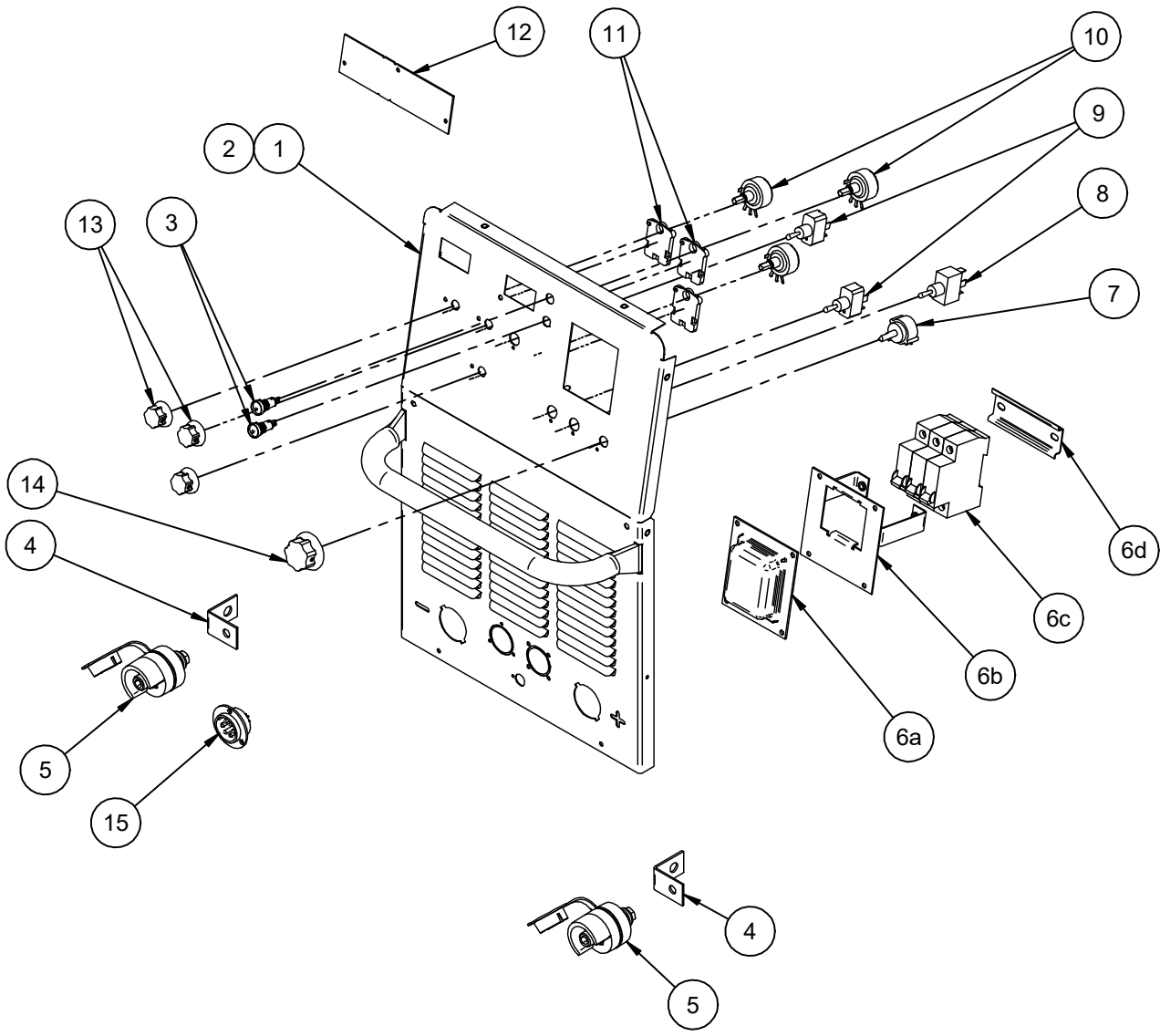
Part Numbers

Index of Sub Assemblies

Part Numbers

Index of Sub Assemblies

Part Numbers



OPTIMARC® CV355P



ITEM	DESCRIPTION	PART NO.	QTY.	1	2					76457	1
1	Case Front Welded Assembly	7FG5874-14	1	X	X					76458	2
1a	ST4.8x13 Hex Self Tapping Screw (Not Shown)	S26738-2	2	X	X						
2	Front Panel Decal	G8293-7	1	X	-						
2	Front Panel Decal	G8293-8	1	-	X						
3	* Switchboard Harness - J20/J21/J23/J27 on Switchboard & X1 on 40V Power Board. Includes:	7FG8321-2 *	1	X	X						
3	** Switchboard Harness - J20/J21/J23/J27 on Switchboard, X1 on 40V Power Board & J3/J5 on Fan Control Board. Includes:	G8321-12 **	1	X	X						
3a	Yellow LED Assembly	7FS29850-1	1	X	X						
3b	Bi-color LED Assembly	7FS29850-2	1	X	X						
4	Copper Strap	7FS27092-8	2	X	X						
5	Output Connector	M22415-10	2	X	X						
6a	Switch Cover	S27281	1	X	X						
6b	Switch Bracket Welded Assembly	M21705	1	X	X						
6c	Line Switch	S27016	1	X	X						
6d	Din Rail	7FS27200	1	X	X						
6e	M5x12 Combined Screw (Not Shown)	S28798-4	2	X	X						
6f	M4 Plain Washer (Not Shown)	S26638-2	4	X	X						
6g	M4 Lock Washer (Not Shown)	S26639-2	4	X	X						
6h	M4 Hex Nut (Not Shown)	S26640-2	4	X	X						
7	Switch Harness – J3&J4 on Control Board, Includes: 5 Position Rotary Switch (Weld Mode Switch)	7FG6043-47 7FS16670-22	1 1	X X	X X						
8	Toggle Switch, SPDT	S29831-2	1	X	X						
8a	Locking Ring (Not Shown)	S28340-1	1	X	X						
9	Toggle Switch, SPST	S29831-3	2	X	X						
9a	Locking Ring (Not Shown)	S28340-1	2	X	X						
10	Display & Pot Harness – J2&J6 on Control Board, Includes:	7FG6043-35	1	X	X						
10a	Potentiometer	7FT10812-127	3	X	X						
11	Potentiometer Spacer	7FS18280	3	X	X						
12	Display Board Assembly	7FS29835	1	X	X						
13	Knob	7FS28748-12	3	X	X						
13a	O Ring (Not Shown)	7FT13483-34	3	X	X						
14	Knob	7FS28748-8	1	X	X						
14a	O Ring (Not Shown)	7FT13483-34	1	X	X						
15	Wire Feeder Harness – J5 on Control PCB, Includes:	7FG6043-37	1	X	X						
15a	6 Pin Control Socket	7FS26179	1	X	X						
15b	M3 Flat Head Philips Screw (Not Shown)	S26641-1	3	X	X						
15c	M3 Plain Washer (Not Shown)	S26638-1	3	X	X						
15d	M3 Lock Washer (Not Shown)	S26639-1	3	X	X						
15e	M3 Hex Nut (Not Shown)	S26640-1	3	X	X						
16	Blank Decal (Not Shown)	S30243-5	1	X	X						

**NOTE:** Use only the parts marked “X” in the column under the heading number called for in the model index page.

\* Only for machine without Fan Control Board.

\*\* Only for machine with Fan Control Board.

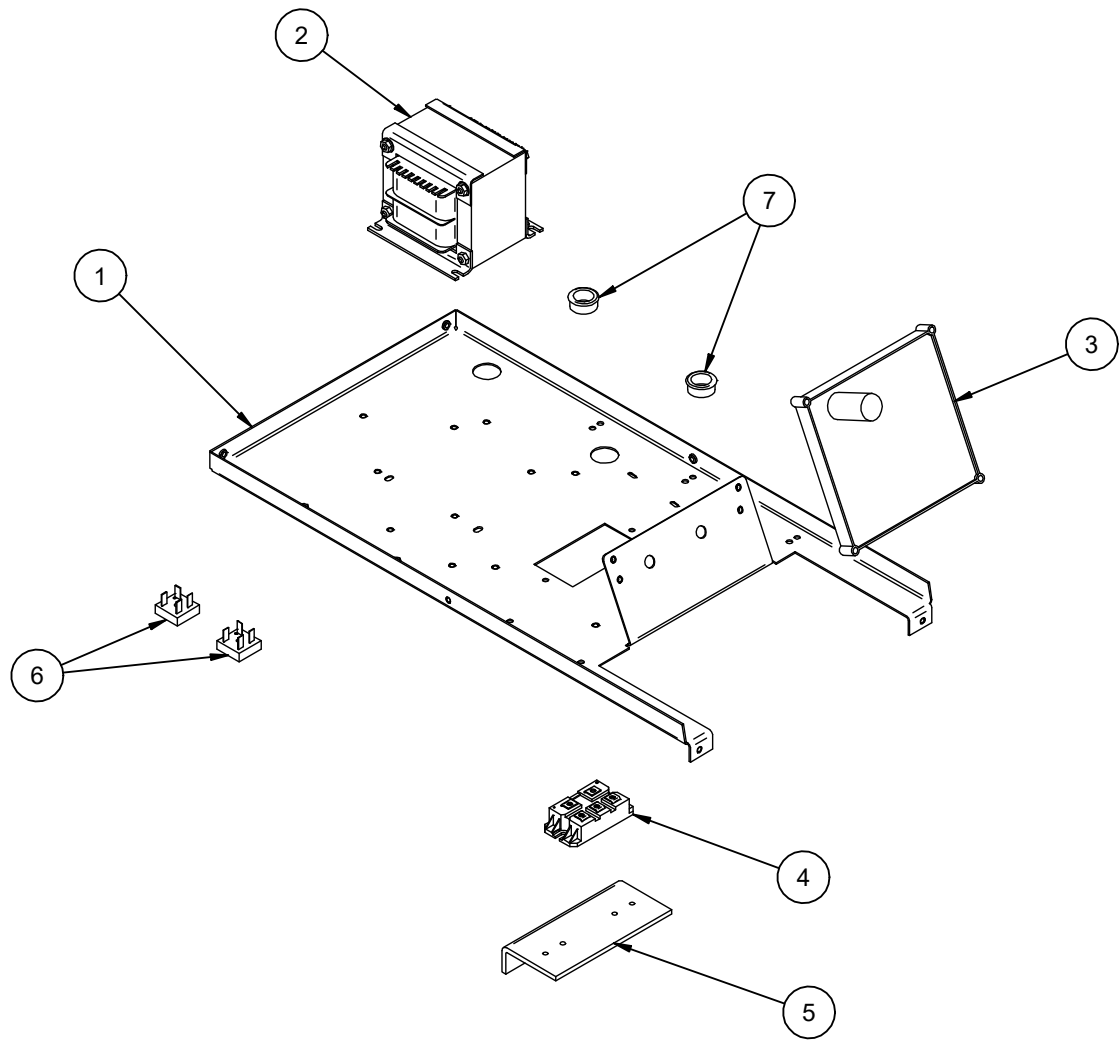
Index of Sub Assemblies  
Sub Assembly Illustration

Index of Sub-Assemblies  
Part Numbers

Index of Sub Assemblies  
Part Numbers

Index of Sub Assemblies  
Part Numbers

Index of Sub Assemblies  
Part Numbers



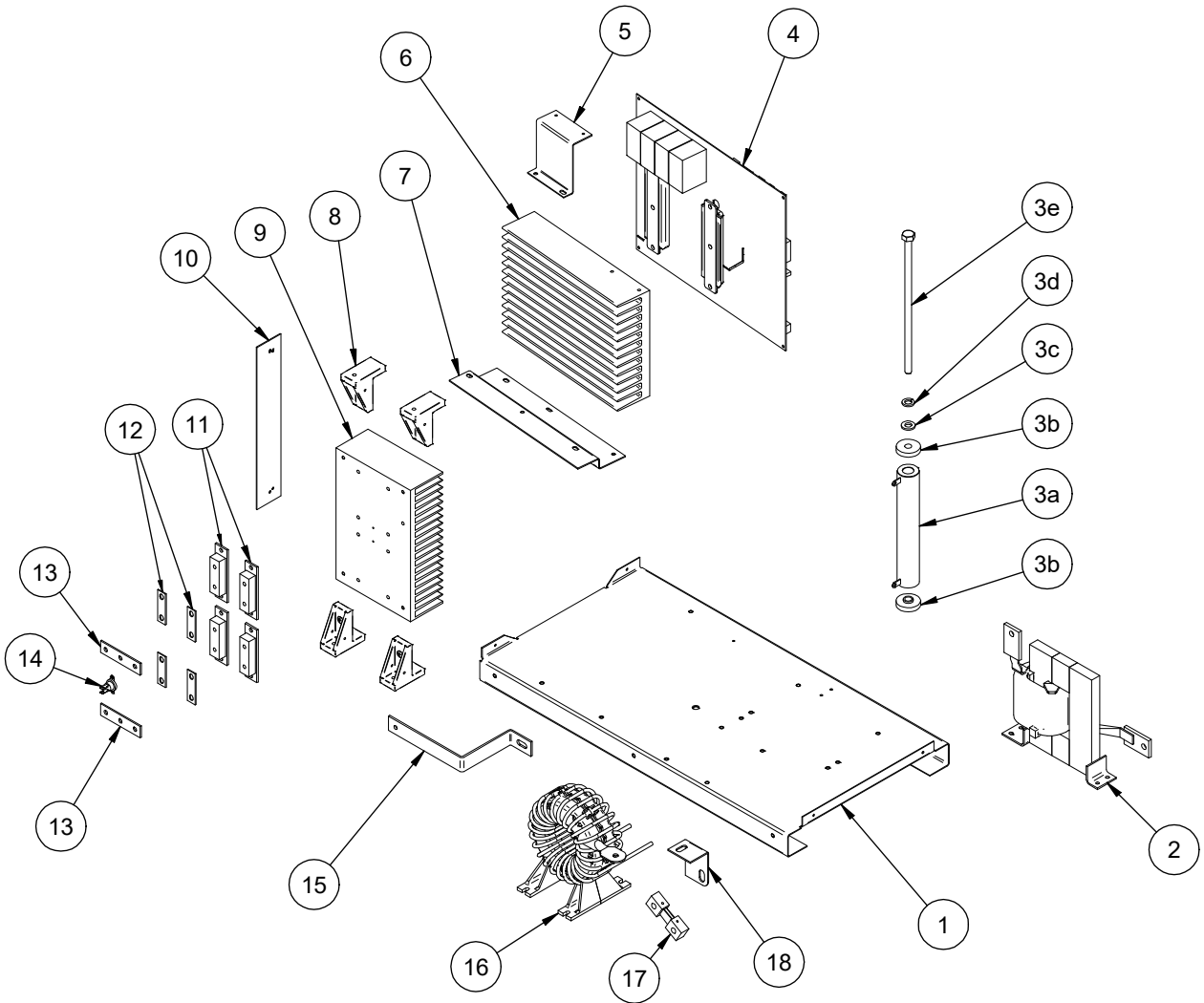
OPTIMARC® CV355P



ITEM	DESCRIPTION	PART NO.	QTY.	1	2					76457	1
1	Divider Panel	7FG5926-14	1	X	X					76458	2
1a	M5x12 Hex Washer Head Screw (Not Shown)	S26641-4	4	X	X						
2	Auxiliary Transformer	M21437-23	1	X	-						
2	Auxiliary Transformer	7FM21437-24	1	-	X						
2a	M5x12 Combined Screw (Not Shown)	S28798-4	4	X	X						
3	Control PC Board	7FS31222	1	X	X						
3a	M5x30 Combined Screw (Not Shown)	S28798-8	2	X	X						
4	Input Rectifier	7FM15454-25	1	X	X						
4a	M5x16 Combined Screw (Not Shown)	S28798-5	2	X	X						
4b	MOV Assembly (Not Shown)	7FS27147-5	1	X	X						
5	Input Rectifier Heat Sink	M21756-11	1	X	X						
5a	M5x12 Combined Screw (Not Shown)	S28798-4	2	X	X						
6	Diode-Bridge	7FT13637-6	2	X	X						
6a	M5x20 Screw (Not Shown)	S26641-5	2	X	X						
6b	M5 Plain Washer (Not Shown)	S26638-3	2	X	X						
6c	M5 Lock Washer (Not Shown)	S26639-3	2	X	X						
7	Grommet	7FT12380-4	2	X	X						
8	Aux Harness (Not Shown)	7FG6043-1	1	X	X						
9	Gas Control Harness – J1 on Control PCB (Not Shown)	7FG6043-33	1	X	X						
10	Control PC Board Fuse Harness (Not Shown)	G6043-55	1	X	X						
11	* Fan Control Board Assembly (Not Shown)	G10352-2 *	1	X	X						
11a	* M4x19 Self Tapping Screw (Not Shown)	S26738-10 *	2	X	X						
12	* PCB Bracket (Not Shown)	S28576-8 *	1	X	X						
12a	* M5x12 Combined Screw (Not Shown)	S28798-4 *	2	X	X						

**NOTE:** Use only the parts marked “X” in the column under the heading number called for in the model index page.  
 \* Not available on machine manufactured before September 2022.

Index of Sub-Assemblies  
 Sub Assembly Illustration  
 Index of Sub-Assemblies  
 Sub Assembly Illustration  
 Index of Sub-Assemblies  
 Sub Assembly Illustration  
 Index of Sub-Assemblies  
 Sub Assembly Illustration



OPTIMARC® CV355P





ITEM	DESCRIPTION	PART NO.	QTY.	1						76457	1
1	Base	7FG5872-6	1	X						76458	1
2	Choke Assembly	7FL13166-7	1	X							
2a	M5x12 Combined Screw (Not Shown)	S28798-4	4	X							
3	Resistor Assembly, Includes:	7FS27175-3	1	X							
3a	Resistor	M20716-7	1	X							
3b	PET	S26787-4	2	X							
3c	M10 Plain Washer	S26638-6	1	X							
3d	M10 Lock Washer	S26639-6	1	X							
3e	M10 Bolt	S26185-13	1	X							
4	Switchboard Assembly, Includes:	G5932-13	1	X							
	Switchboard	S33468	1	X							
4a	Torx Button Head M6 Screw (Not Shown)	S25930-8	6	X							
4b	M6 Plain Washer (Not Shown)	S26638-8	6	X							
4c	M6 Lock Washer (Not Shown)	S26639-11	6	X							
4d	Thermal Joint Compound E1868 (Not Shown)	NSS		X							
5	Top Switchboard Bracket	M21756-9	1	X							
5a	M5x12 Combined Screw (Not Shown)	S28798-4	2	X							
6	Switchboard Heatsink	M24710-14	1	X							
7	Bottom Switchboard Bracket	M21756-16	1	X							
7a	M5x12 Combined Screw (Not Shown)	S28798-4	3	X							
8	Output Rectifier Assembly, Includes:	L13174-15	1	X							
	Support Bracket	7FM24920	4	X							
8a	M5x20 Combined Screw (Not Shown)	S28798-12	4	X							
9	Output Rectifier Heatsink	7FM24710-16	1	X							
10	Wind Shield (Right)	M25150-6	1	X							
10a	ST4.8x13 Hex Self Tapping Screw (Not Shown)	S26738-2	2	X							
11	Output Diodes	7FM15454-24	4	X							
11a	M6x16 Combined Screw (Not Shown)	S28798-7	8	X							
11b	Electric Joint Compound (Not Shown)	NSS		X							
12	Reconnect Panel Link	7FT14190-1	4	X							
12a	M6x12 Combined Screw (Not Shown)	S28798-10	8	X							
13	Copper Strap	S27092-1	2	X							
14	Thermostat	T13359-26	1	X							
14a	M3x10 Combined Screw (Not Shown)	S28798-6	2	X							
15	Aluminum Bar	M24712-4	1	X							
15a	M6x12 Combined Screw (Not Shown)	S28798-10	1	X							
15b	M8x25 Hex Head Screw (Not Shown)	S26641-8	1	X							
15c	M8 Plain Washer (Not Shown)	S26638-4	2	X							
15d	M8 Lock Washer (Not Shown)	S26639-4	1	X							
15e	M8 Hex Nut (Not Shown)	S26640-4	1	X							
15f	Electric Joint Compound (Not Shown)	NSS		X							
16	Main Transformer Assembly	L15759-6	1	X							
16a	M5x16 Combined Screw (Not Shown)	S28798-5	4	X							
<b>See next page for more.</b>											

**NOTE:** Use only the parts marked "X" in the column under the heading number called for in the model index page.  
**NSS** – Not Sold Separately

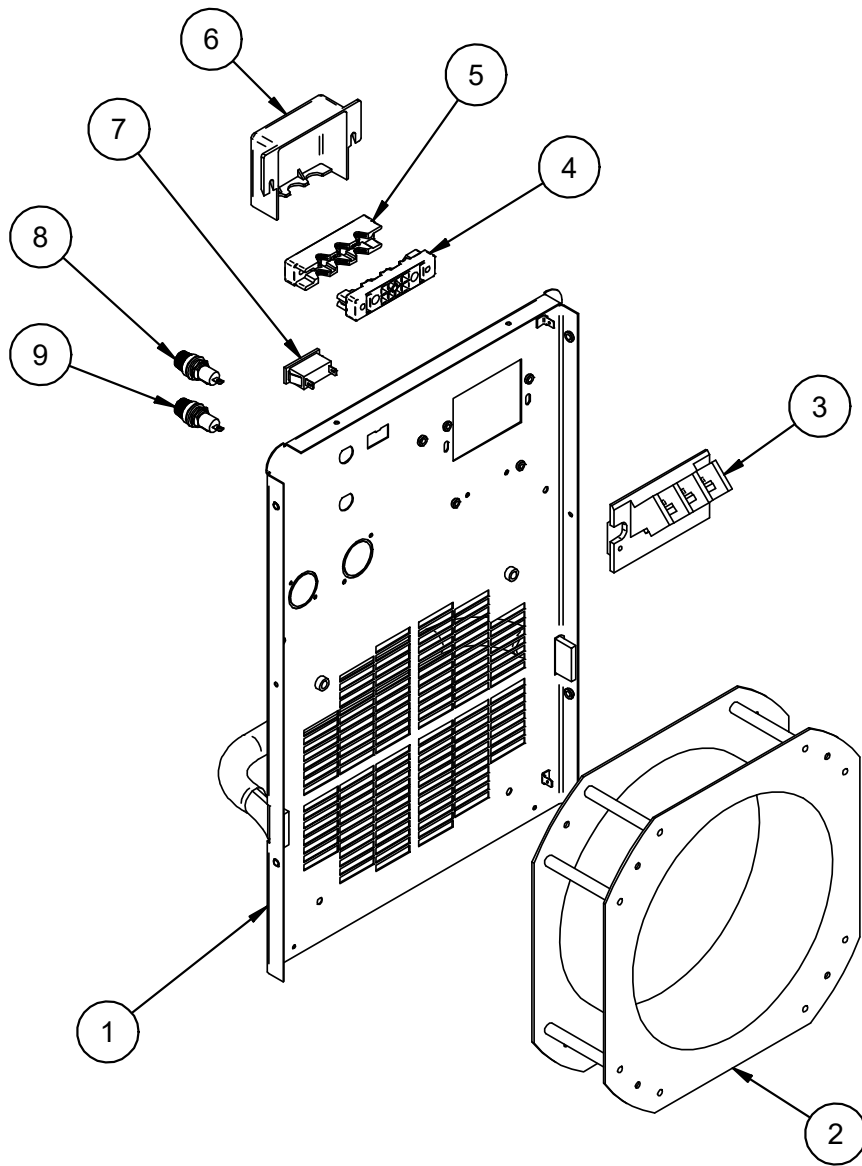
Index of Sub Assemblies  
 Sub Assembly Illustration  
 Index of Sub Assemblies  
 Sub Assembly Illustration  
 Index of Sub Assemblies  
 Sub Assembly Illustration  
 Index of Sub Assemblies  
 Sub Assembly Illustration

**(Continued)**

ITEM	DESCRIPTION	PART NO.	QTY.	1					76457	1
17	Shunt	S26194-1	1	X					76458	1
17a	M8x40 Hex Head Screw (Not Shown)	S26641-9	2	X						
17b	M8 Plain Washer (Not Shown)	S26638-4	4	X						
17c	M8 Lock Washer (Not Shown)	S26639-4	2	X						
17d	M8 Hex Nut (Not Shown)	S26640-4	2	X						
17e	M3x12 Hex Head Screw (Not Shown)	S26641-1	2	X						
17f	M3 Plain Washer (Not Shown)	S26638-1	2	X						
17g	M3 Lock Washer (Not Shown)	S26639-1	2	X						
18	Copper Strap (Main Transformer to Shunt)	S27092-21	1	X						
18a	M8x25 Hex Head Screw (Not Shown)	S26641-8	1	X						
18b	M8 Plain Washer (Not Shown)	S26638-4	2	X						
18c	M8 Lock Washer (Not Shown)	S26639-4	1	X						
18d	M8 Hex Nut (Not Shown)	S26640-4	1	X						
19	MOV Assembly for Output (Not Shown)	S27147-4	1	X						
20	Thermostat Harness (Not Shown)	7FG6043-41	1	X						

**NOTE:** Use only the parts marked "X" in the column under the heading number called for in the model index page.

Index of Sub-Assemblies  
 Sub Assembly Illustration  
 Index of Sub-Assemblies  
 Sub Assembly Illustration  
 Index of Sub-Assemblies  
 Sub Assembly Illustration  
 Index of Sub-Assemblies  
 Sub Assembly Illustration



OPTIMARC® CV355P



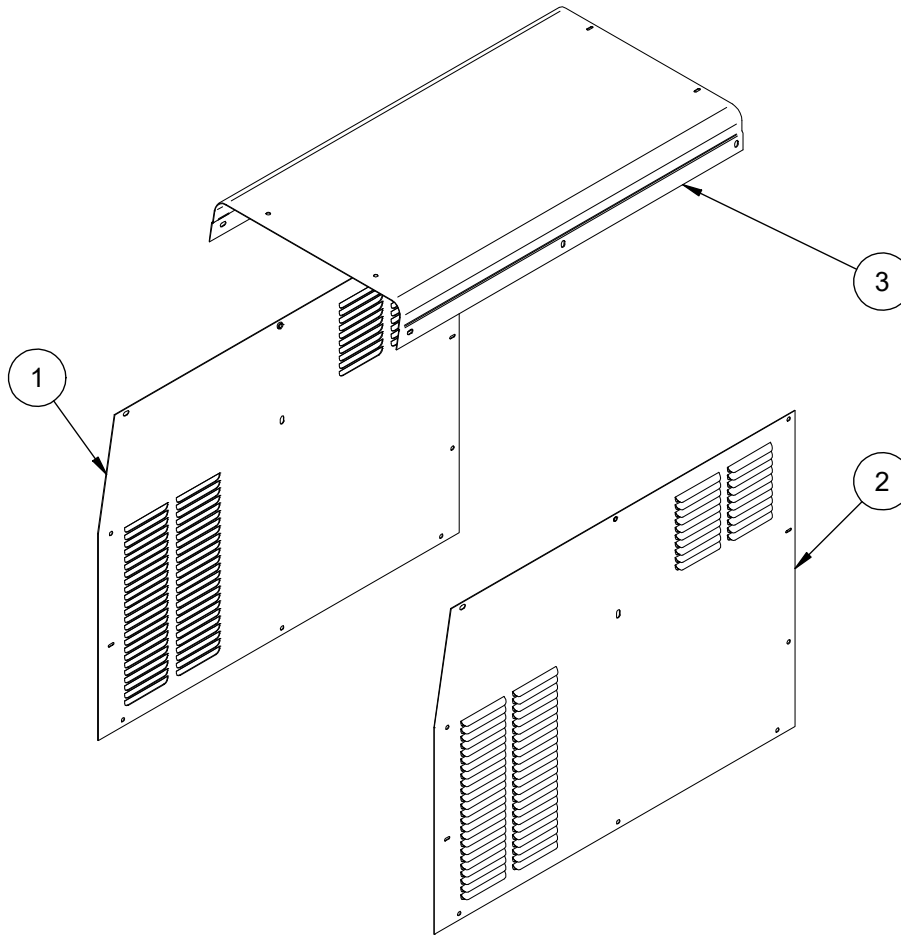
ITEM	DESCRIPTION	PART NO.	QTY.	1	2				76457	1
1	Case Back Welded Assembly	7FG5873-14	1	X	X				76458	2
1a	M5x12 Hex Washer Head Screw (Not Shown)	S26641-4	1	X	X					
1b	ST4.8x13 Hex Self Tapping Screw (Not Shown)	S26738-2	1	X	X					
2	Fan, Includes:	M22731-3	1	X	X					
2a	Fan Capacitor (Not Shown)	M22731-3-B	1	X	X					
2b	M5x30 Hex Head Screw (Not Shown)	S26641-6	4	X	X					
2c	M5 Plain Washer (Not Shown)	S26638-3	4	X	X					
2d	M5 Lock Washer (Not Shown)	S26639-3	4	X	X					
2e	M5 Hex Nut (Not Shown)	S26640-3	4	X	X					
2f	* Fan Harness (Not Shown)	7FG6043-43 *	1	X	X					
2f	** Fan Harness (Not Shown)	G6043-75 **	1	X	X					
3	Input Block	M20720-6	1	X	X					
3a	M4x30 Hex Washer Head Screw (Not Shown)	S26641-3	2	X	X					
3b	M4 Plain Washer (Not Shown)	S26638-2	2	X	X					
3c	M4 Lock Washer (Not Shown)	S26639-2	2	X	X					
3d	M4 Hex Nut (Not Shown)	S26640-2	2	X	X					
3e	Input Snubber Assembly (Not Shown)	S26781-2	1	X	X					
4	Cable Holder Base	M20720-5	1	X	X					
4a	M5x10 Combined Screw (Not Shown)	S28798-6	2	X	X					
5	Cable Holder Cover	M20720-4	1	X	X					
5a	M4x30 Hex Washer Head Screw (Not Shown)	S26641-3	2	X	X					
6	Input Supply Box	M20720-2	1	X	X					
6a	M4x30 Hex Washer Head Screw (Not Shown)	S26641-3	2	X	X					
6b	M4 Plain Washer (Not Shown)	S26638-2	2	X	X					
6c	M4 Lock Washer (Not Shown)	S26639-2	2	X	X					
7	Receptacle	S26506-2	1	X	X					
8	Fuse Holder	7FT12386-6	1	X	X					
8a	Fuse 2A (Not Shown)	7FT10728-20	1	X	-					
8a	Fuse 8A (Not Shown)	T10728-55	1	-	X					
8b	Decal, Heater And Fuse (Not Shown)	S26743	1	-	X					
8b	Decal, Heater And Fuse (Not Shown)	S26743-2	1	X	-					
9	Fuse Holder	7FT12386-6	1	X	X					
9a	Fuse 8A (Not Shown)	T10728-55	1	X	X					
9b	Decal, 8A Fuse (Not Shown)	S26743-15	1	-	X					
9b	Decal, 8A Fuse (Not Shown)	S26743-18	1	X	-					
10	Decal, Connection Diagram (Not Shown)	S26724	1	-	X					
10	Decal, Connection Diagram (Not Shown)	S26724-1	1	X	-					
11	Ground Decal (Not Shown)	S26732	1	X	X					

**NOTE:** Use only the parts marked "X" in the column under the heading number called for in the model index page.

\* Only for machine without Fan Control Board.

\*\* Only for machine with Fan Control Board.

Index of Sub Assemblies  
Sub Assembly Illustration



OPTIMARC® CV355P



ITEM	DESCRIPTION	PART NO.	QTY.	1						76457	1
1	Left Case Side	7FG5879-7	1	X						76458	1
1a	M5x12 Hex Washer Head Screw (Not Shown)	S26641-4	6	X							
1b	ST4.8x13 Hex Self Tapping Screw (Not Shown)	S26738-2	2	X							
2	Right Case Side	7FG5880-8	1	X							
2a	M5x12 Hex Washer Head Screw (Not Shown)	S26641-4	6	X							
2b	ST4.8x13 Hex Self Tapping Screw (Not Shown)	S26738-2	2	X							
3	Roof Welded Assembly	7FG5878-5	1	X							
3a	M5x12 Hex Washer Head Screw (Not Shown)	S26641-4	8	X							
3b	ST4.8x13 Hex Self Tapping Screw (Not Shown)	S26738-2	2	X							

**NOTE:** Use only the parts marked "X" in the column under the heading number called for in the model index page.

Index of Sub-Assemblies  
 Sub Assembly Illustration  
 Index of Sub Assemblies  
 Sub Assembly Illustration  
 Index of Sub Assemblies  
 Sub Assembly Illustration  
 Index of Sub Assemblies  
 Sub Assembly Illustration