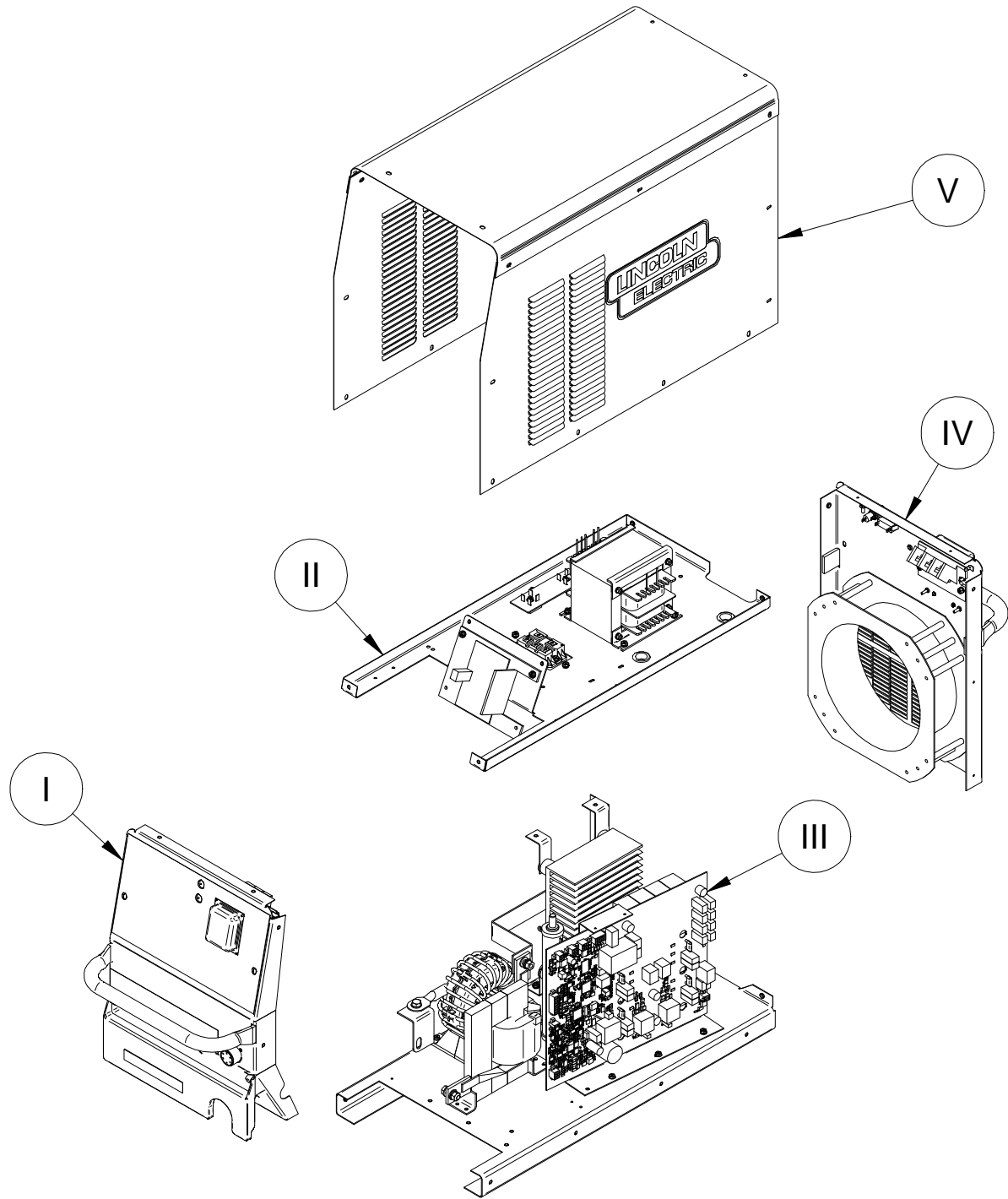


PARTS LIST FOR OPTIMARC® 500PA



ILLUSTRATION OF SUB-ASSEMBLIES



OPTIMARC® 500PA



OPTIMARC® 500PA

For codes: 76259, 76260

Do Not use this Parts List for a machine if its code number is not listed. For any code numbers not listed, contact the Service Department via: china_service@lincolnelectric.com.

Use the Illustration of Sub-Assemblies page and the table below to determine which sub assembly page and column the desired part is located on for your particular code machine.

SUB ASSEMBLY ITEM NO. →	I	II	III	IV	V
SUB ASSEMBLY PAGE NAME →	Case Front Assembly	Divider Panel Assembly	Base & Center Assembly	Case Back Assembly	Wraparound Assembly
PAGE NO. →	PB-1	PC-1	PD-1	PE-1	PF-1
CODE NO. ↓					
76259	1	1	1	1	1
76260	2	2	1	2	2

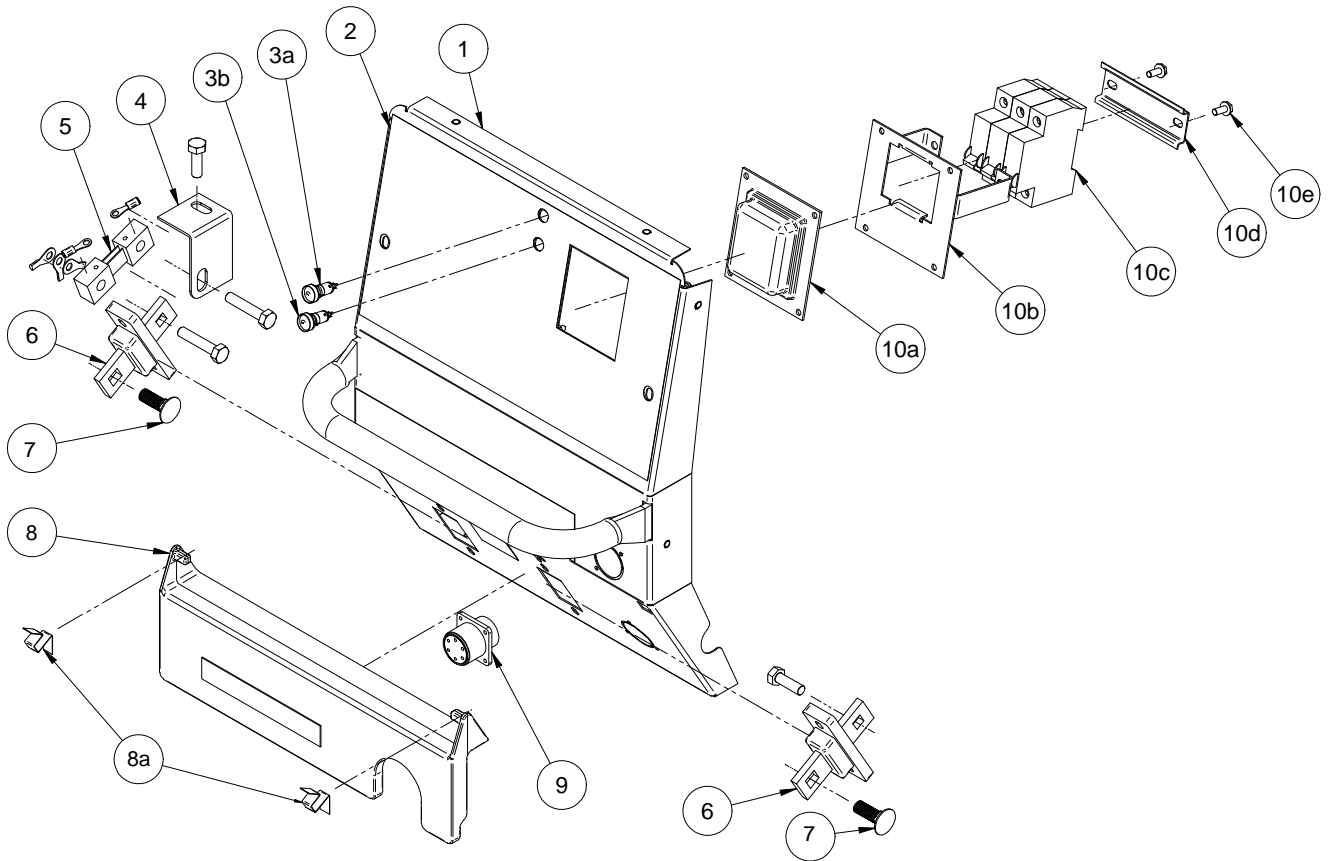
Illustration of Sub Assemblies

Index of Sub-Assemblies
Part Numbers

Index of Sub-Assemblies
Part Numbers

Index of Sub-Assemblies
Part Numbers

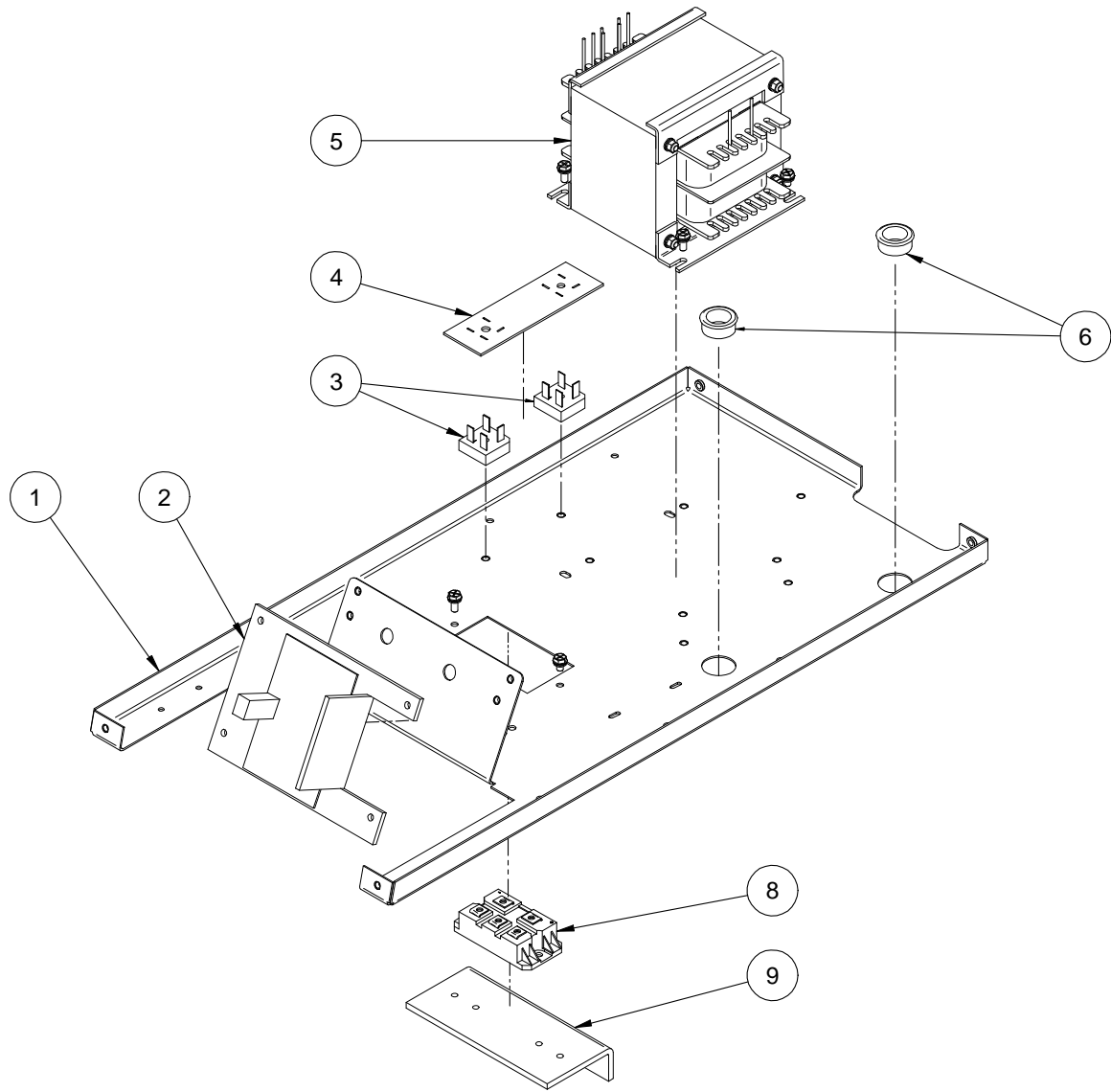
Index of Sub-Assemblies
Part Numbers



ITEM	DESCRIPTION	PART NO.	QTY.	1	2					76259	1
										76260	2
1	Case Front Welded Assembly	G5874-13	1	X	X						
1a	M5X12 Hex Washer Head Philips (Not Shown)	S26641-4	3	X	X						
1b	ST4.8X13 Washer Faced Hex Self (Not Shown)	S26738-2	1	X	X						
2	Control Nameplate	G6082-58	1	X	-						
2	Control Nameplate	G6082-59	1	-	X						
3	Weld Control Board Harness (Not Shown), Includes:	G6043-50	1	X	X						
3a	Yellow Led Assembly	S29850-1	1	X	X						
3b	Signal Lamp Assembly	S29850-2	1	X	X						
4	Copper Strap (Main Transformer to Shunt)	S27092-21	1	X	X						
5	Shunt	S26194-1	1	X	X						
5a	M8X40 Carriage Bolt	S27072-2	1	X	X						
5b	M8X40 Hex Head Screw	S26641-9	1	X	X						
5c	M8 Plain Washer (Not Shown)	S26638-4	3	X	X						
5d	M8 Lock Washer (Not Shown)	S26639-4	2	X	X						
5e	M8 Hex Nut (Not Shown)	S26640-4	2	X	X						
6	Output Stud	M20710-1	2	X	X						
6a	M5 Hex Head Screw (Not Shown)	S26641-5	4	X	X						
6b	M6 Plain Washer (Not Shown)	S26638-8	8	X	X						
6c	M5 Lock Washer (Not Shown)	S26639-3	4	X	X						
6d	M5 Hex Nut (Not Shown)	S26640-3	4	X	X						
6e	MOV Assembly for Output (Not Shown)	S27147-4	1	X	X						
7	M10X22 Carriage Bolt	S27072-1	2	X	X						
7a	M10 Plain Washer (Not Shown)	S26638-6	2	X	X						
7b	M10 Lock Washer (Not Shown)	S26639-6	2	X	X						
7c	M10 Hex Nut (Not Shown)	S26640-6	2	X	X						
8	Door	L13141	1	X	X						
8a	Spring Clip	S27348	2	X	X						
8b	Output Stud Door Decal	M21174-9	1	X	X						
9	Wire Feeder Harness (Not Shown), Includes:	G6043-51	1	X	X						
9a	5 Pin Amphenol Female Connector	S28574-3	1	X	X						
9b	M3 Flat Head Philips Screw (Not Shown)	S26641-1	2	X	X						
9c	M3 Plain Washer (Not Shown)	S26638-1	2	X	X						
9d	M3 Lock Washer (Not Shown)	S26639-1	2	X	X						
9e	M3 Hex Nut (Not Shown)	S26640-1	2	X	X						
9f	Amphenol Connector Cover (Not Shown)	S30264-2	1	X	X						
10a	Switch Cover	S27281	1	X	X						
10b	Switch Bracket Welded Assembly	M21705	1	X	X						
10c	Line Switch	S27016	1	X	X						
10d	Din Rail	S27200	1	X	X						
10e	M5X12 Combined Screw	S28798-4	2	X	X						
10f	M4 Plain Washer (Not Shown)	S26638-2	4	X	X						
10g	M4 Lock Washer (Not Shown)	S26639-2	4	X	X						
10h	M4 Hex Nut (Not Shown)	S26640-2	4	X	X						
11	OPTIMARC 500PA Blank Nameplate (Not Shown)	G6082-60	1	X	X						
12	Blank Decal (Not Shown)	S30243-5	1	X	X						

NOTE: Use only the parts marked "X" in the column under the heading number called for in the model index page.

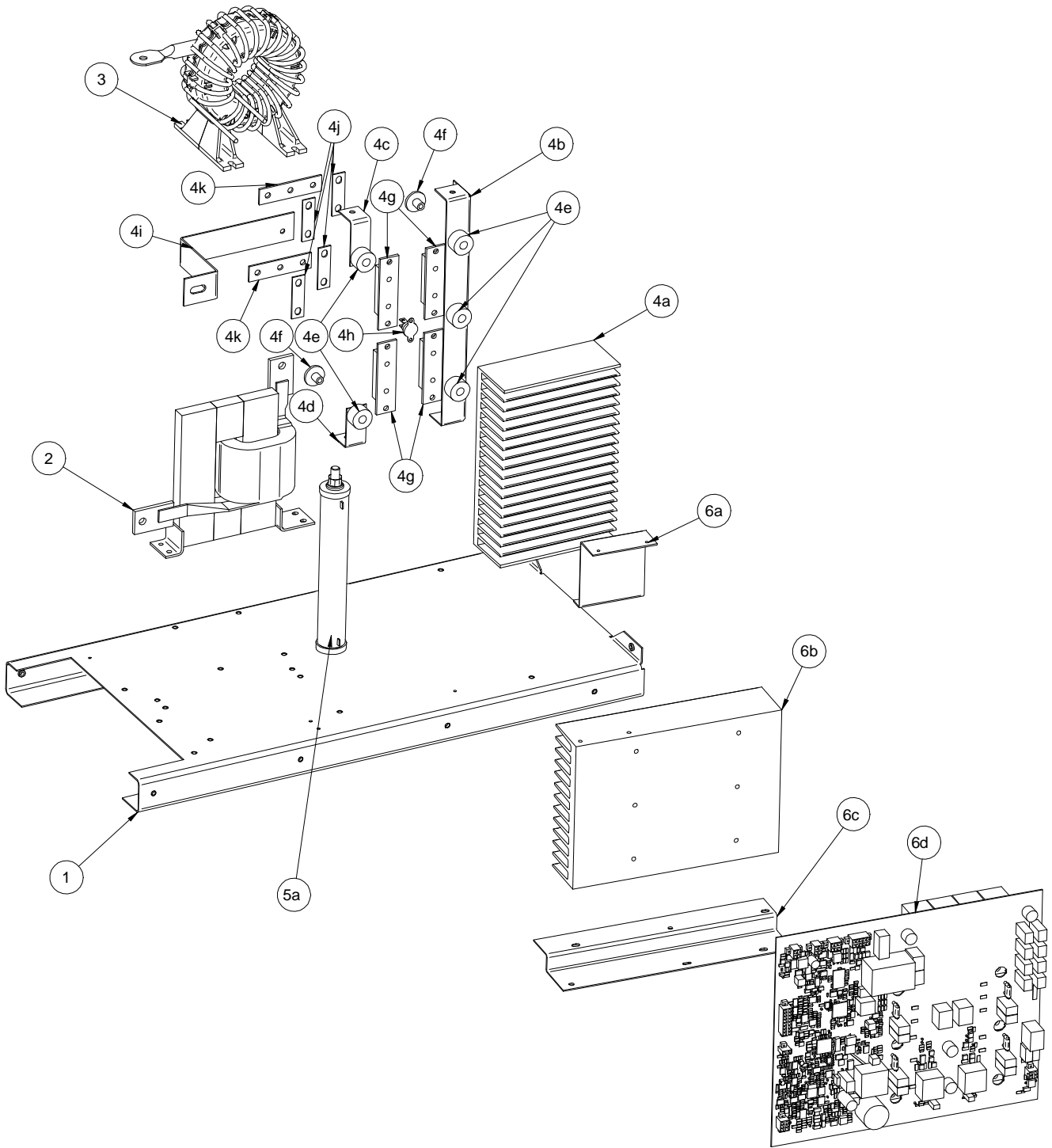
Index of Sub Assemblies
 Sub Assembly Illustration
 Index of Sub Assemblies
 Sub Assembly Illustration
 Index of Sub Assemblies
 Sub Assembly Illustration
 Index of Sub Assemblies
 Sub Assembly Illustration



ITEM	DESCRIPTION	PART NO.	QTY.	1	2					76259	1
										76260	2
1	Divider Panel	G5926-12	1	X	X						
1a	M5X12 Hex Washer Head Philips (Not Shown)	S26641-4	4	X	X						
2	40V Power Supply Board	S30261	1	X	X						
2a	M5X30 Combined Screw (Not Shown)	S28798-8	2	X	X						
3	Diode-Bridge	T13637-6	2	X	X						
3a	M5 Combined Screw (Not Shown)	S26641-5	2	X	X						
3b	M5 Plain Washer (Not Shown)	S26638-3	2	X	X						
3c	M5 Lock Washer (Not Shown)	S26639-3	2	X	X						
4	Feeder Power Filter PCB Assembly	G8291-2	1	X	X						
5	Auxiliary Transformer	M21437-19	1	X	-						
5	Auxiliary Transformer	M21437-21	1	-	X						
5a	M5X12 Combined Screw (Not Shown)	S28798-4	4	X	X						
5b	M5 Plain Washer (Not Shown)	S26638-3	2	X	X						
5c	M5 Lock Washer (Not Shown)	S26639-3	2	X	X						
5d	M5 Hex Nut (Not Shown)	S26640-3	2	X	X						
6	Grommet	T12380-4	2	X	X						
8	Input Rectifier	M15454-25	1	X	X						
8a	M5X16 Combined Screw (Not Shown)	S28798-5	2	X	X						
8b	MOV Assembly (Not Shown)	S27147-5	1	X	X						
9	Heat Sink	M21756-11	1	X	X						
9a	M5X12 Combined Screw	S28798-4	2	X	X						

NOTE: Use only the parts marked "X" in the column under the heading number called for in the model index page.

Index of Sub-Assemblies
 Sub Assembly Illustration
 Index of Sub-Assemblies
 Sub Assembly Illustration
 Index of Sub-Assemblies
 Sub Assembly Illustration
 Index of Sub-Assemblies
 Sub Assembly Illustration



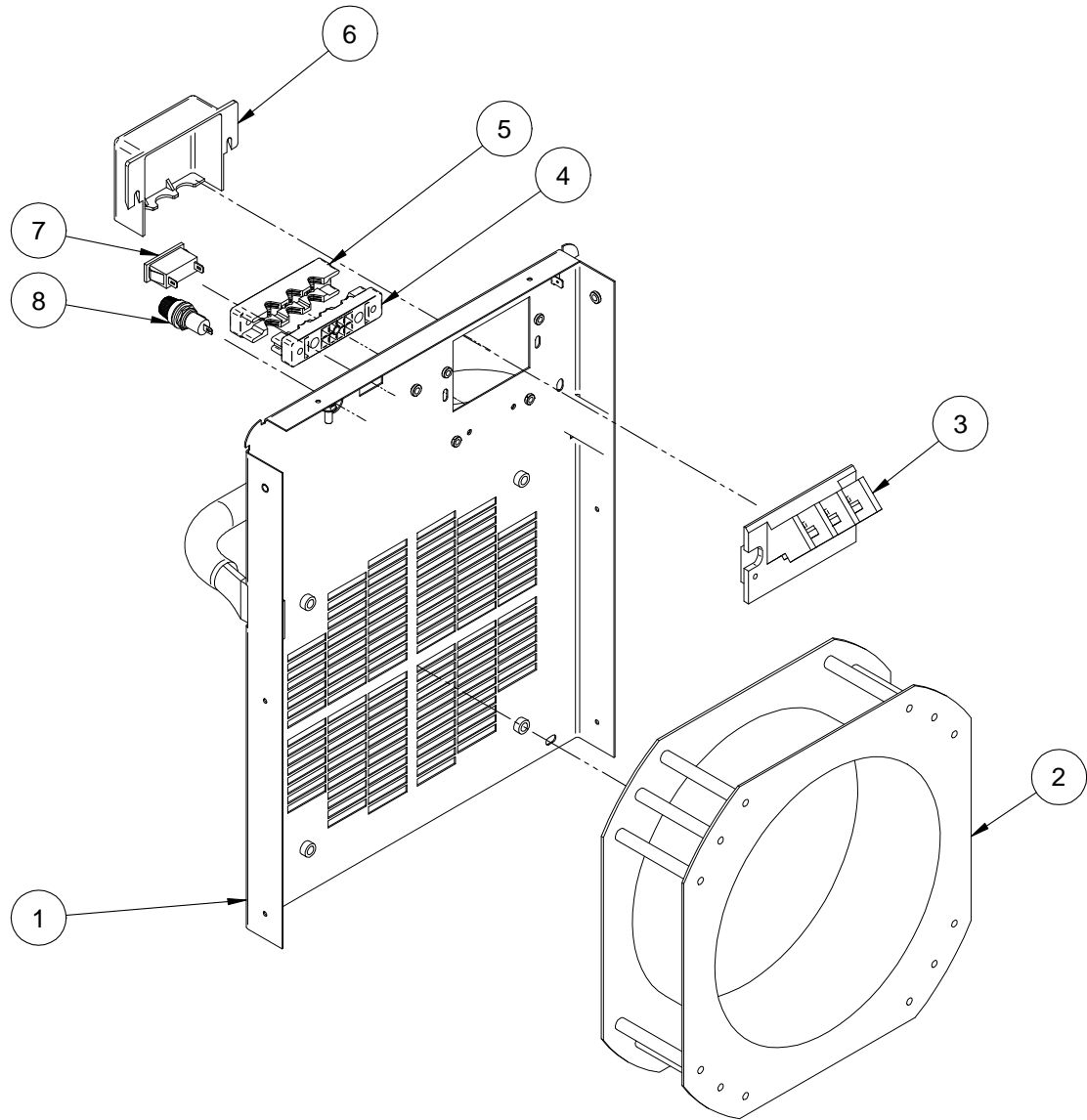
OPTIMARC® 500PA



ITEM	DESCRIPTION	PART NO.	QTY.	1					76259	1
1	Base	G5872-3	1	X					76260	1
2	Choke Assembly	L13166-5	1	X						
2a	M5X12 Combined Screw (Not Shown)	S28798-4	4	X						
3	Main Transformer Assembly	L15759-1	1	X						
3a	M5X16 Combined Screw (Not Shown)	S28798-5	4	X						
4	Output Rectifier Assembly, Includes:	L13174-8	1	X						
4a	Heatsink	M24710-10	1	X						
4b	Support Bracket	L13173-15	1	X						
4b-2	M5 Hex Head Screw (Not Shown)	S26641-6	3	X						
4b-3	M5 Plain Washer (Not Shown)	S26638-3	3	X						
4b-4	M5 Lock Washer (Not Shown)	S26639-3	3	X						
4c	Support Bracket	L13173-16	1	X						
4c-2	M5X30 Combined Screw (Not Shown)	S28798-8	1	X						
4d	Support Bracket	L13173-18	1	X						
4d-2	M5X30 Combined Screw (Not Shown)	S28798-8	1	X						
4e	Spacer	S26158	5	X						
4f	Spacer	S26157	5	X						
4g	Output Diodes	M15454-24	4	X						
4g-2	M6X16 Combined Screw (Not Shown)	S28798-7	8	X						
4h	Thermostat	T13359-26	1	X						
4h-2	M3X10 Combined Screw (Not Shown)	S28798-6	2	X						
4i	Aluminum Bar	M24712-4	1	X						
4j	Reconnect Panel Link	T14190-1	4	X						
4k	Copper Strap	S27092-1	2	X						
4k-2	M6X20 Screw (Not Shown)	S26641-37	2	X						
4k-3	M6 Plain Washer (Not Shown)	S26638-8	2	X						
4k-4	M6 Lock Washer (Not Shown)	S26639-11	2	X						
4k-5	M6 Hex Nut (Not Shown)	S26640-8	2	X						
4l	M5X12 Combined Screw (Not Shown)	S28798-4	4	X						
5	Resistor Assembly, Includes:	S27175-3	1	X						
5a	Resistor	M20716-7	1	X						
5b	M10 Bolt (Not Shown)	S26185-13	1	X						
5c	M10 Plain Washer (Not Shown)	S26638-6	1	X						
5d	M10 Lock Washer (Not Shown)	S26639-6	1	X						
5e	M10 Hex Nut (Not Shown)	S26640-6	1	X						
5f	PET (Not Shown)	S26787-4	2	X						
6a	Top Switchboard Bracket	M21756-9	1	X						
6a-2	M5X12 Combined Screw (Not Shown)	S28798-4	2	X						
6b	Heatsink	M24710-14	1	X						
6c	Bottom Switchboard Bracket	M21756-16	1	X						
6c-2	M5X12 Combined Screw (Not Shown)	S28798-4	3	X						
6d	Switchboard	S30262	1	X						
6e	Torx Button Head Screw (Not Shown)	S25930-8	6	X						
6f	M6 Plain Washer (Not Shown)	S26638-8	6	X						
6g	M6 Lock Washer (Not Shown)	S26639-11	6	X						
7	Thermostat Harness (Not Shown)	G6043-41	1	X						

NOTE: Use only the parts marked "X" in the column under the heading number called for in the model index page.

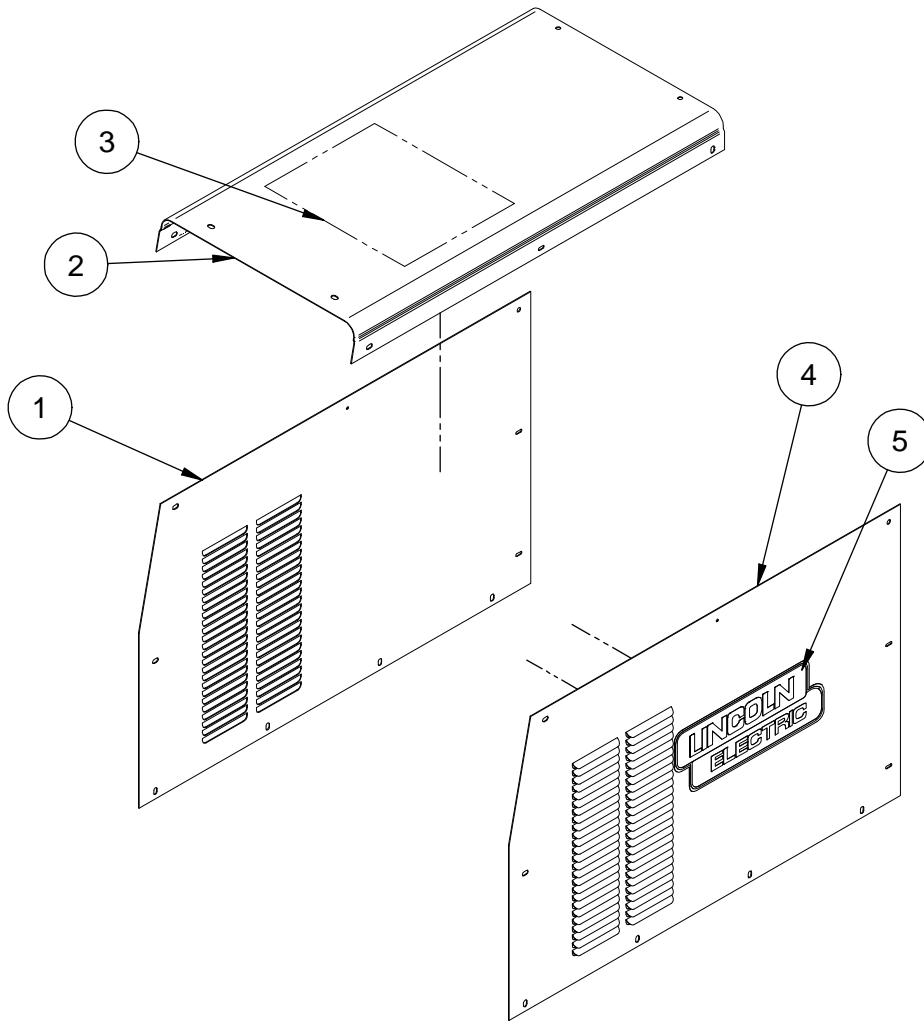
Index of Sub Assemblies
 Sub Assembly Illustration
 Index of Sub Assemblies
 Sub Assembly Illustration
 Index of Sub Assemblies
 Sub Assembly Illustration
 Index of Sub Assemblies
 Sub Assembly Illustration



ITEM	DESCRIPTION	PART NO.	QTY.	1	2					76259	1
										76260	2
1	Case Back Welded Assembly	G5873-12	1	X	X						
1a	M5X12 Hex Washer Head Philips (Not Shown)	S26641-4	1	X	X						
1b	ST4.8X13 Washer Faced Hex Self (Not Shown)	S26738-2	1	X	X						
2	Fan, Includes:	M22731-3	1	X	X						
2a	Fan Capacitor (Not Shown)	M22731-3-B	1	X	X						
2b	M5 Hex Head Screw (Not Shown)	S26641-5	4	X	X						
2c	M5 Plain Washer (Not Shown)	S26638-3	4	X	X						
2d	M5 Lock Washer (Not Shown)	S26639-3	4	X	X						
2e	M5 Hex Nut (Not Shown)	S26640-3	4	X	X						
2f	Fan Harness (Not Shown)	G6043-43	1	X	X						
3	Input Block	M20720-6	1	X	X						
3a	M4X30 Hex Washer Head Philips (Not Shown)	S26641-3	2	X	X						
3b	M4 Plain Washer (Not Shown)	S26638-2	4	X	X						
3c	M4 Lock Washer (Not Shown)	S26639-2	2	X	X						
3d	M4 Hex Nut (Not Shown)	S26640-2	2	X	X						
3e	Input Snubber Assembly (Not Shown)	S26781-2	1	X	X						
4	Cable Holder Base	M20720-5	1	X	X						
4a	M3 Pan Head Philips Screw (Not Shown)	S26641-11	2	X	X						
4b	M3 Plain Washer (Not Shown)	S26638-1	2	X	X						
4c	M3 Lock Washer (Not Shown)	S26639-1	2	X	X						
5	Cable Holder Cover	M20720-4	1	X	X						
5a	M4X30 Hex Washer Head Philips (Not Shown)	S26641-3	2	X	X						
6	Input Supply Box	M20720-2	1	X	X						
6a	M4X30 Hex Washer Head Philips (Not Shown)	S26641-3	2	X	X						
6b	M4 Plain Washer (Not Shown)	S26638-2	2	X	X						
6c	M4 Lock Washer (Not Shown)	S26639-2	2	X	X						
7	Receptacle	S26506-2	1	X	X						
8	Fuse Holder	T12386-6	1	X	X						
8a	Fuse 2A (Not Shown)	T10728-20	1	X	-						
8a	Fuse 8A (Not Shown)	T10728-55	1	-	X						
8b	Decal, Heater and Fuse (Not Shown)	S26743	1	-	X						
8b	Decal, Heater and Fuse (Not Shown)	S26743-2	1	X	-						
9	Decal, Connection Diagram (Not Shown)	S26724	1	-	X						
9	Decal, Connection Diagram (Not Shown)	S26724-1	1	X	-						
10	Ground Decal (Not Shown)	S26732	1	X	X						

NOTE: Use only the parts marked "X" in the column under the heading number called for in the model index page.

Index of Sub-Assemblies
 Sub Assembly Illustration
 Index of Sub-Assemblies
 Sub Assembly Illustration
 Index of Sub-Assemblies
 Sub Assembly Illustration
 Index of Sub-Assemblies
 Sub Assembly Illustration



ITEM	DESCRIPTION	PART NO.	QTY.	1	2				76259	1
1	Left Case Side	G5879-4	1	X	X				76260	2
1a	M5X12 Hex Washer Head Philips (Not Shown)	S26641-4	5	X	X					
1b	ST4.8X13 Washer Faced Hex Self (Not Shown)	S26738-2	2	X	X					
2	Roof Welded Assembly	G5878-2	1	X	X					
2a	M5X12 Hex Washer Head Philips (Not Shown)	S26641-4	6	X	X					
2b	ST4.8X13 Washer Faced Hex Self (Not Shown)	S26738-2	4	X	X					
2c	Label (Not Shown)	M20952	1	X	-					
2c	Label (Not Shown)	M20952-1	1	-	X					
3	Wiring Diagram	NSS	1	X	X					
4	Right Case Side	G5880-5	1	X	X					
4a	M5X12 Hex Washer Head Philips (Not Shown)	S26641-4	5	X	X					
4b	ST4.8X13 Washer Faced Hex Self (Not Shown)	S26738-2	2	X	X					
5	LE Logo	NSS	2	X	X					

NOTE: Use only the parts marked "X" in the column under the heading number called for in the model index page.
NSS – Not Sold Separately

Index of Sub-Assemblies
 Sub Assembly Illustration
 Index of Sub-Assemblies
 Sub Assembly Illustration
 Index of Sub-Assemblies
 Sub Assembly Illustration
 Index of Sub-Assemblies
 Sub Assembly Illustration