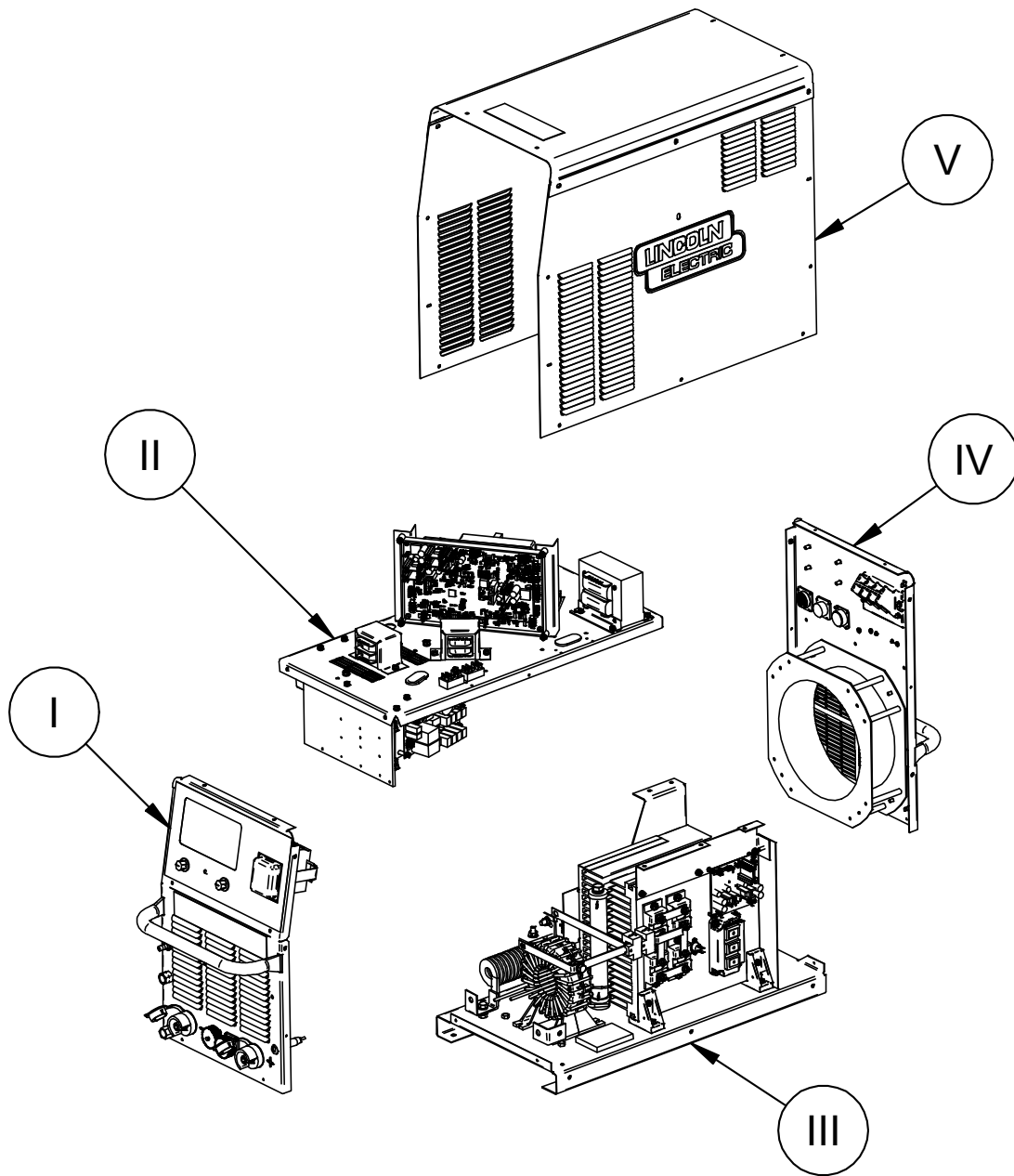


PARTS LIST FOR OPTIMARC[®] AC/DC 350-TP



ILLUSTRATION OF SUB-ASSEMBLIES



OPTIMARC® AC/DC 350-TP



OPTIMARC® AC/DC 350-TP

For code: 76251, 76252, 76507, 76508, 76509, 76510

Do Not use this Parts List for a machine if its code number is not listed. For any code numbers not listed, contact the Service Department via: china_service@lincolnelectric.com.

Use the Illustration of Sub-Assemblies page and the table below to determine which sub assembly page and column the desired part is located on for your particular code machine.

SUB ASSEMBLY ITEM NO. →	I	II	III	IV	V
SUB ASSEMBLY PAGE NAME →	Case Front Assembly	Divider Panel Assembly	Base & Center Assembly	Case Back Assembly	Wraparound Assembly
PAGE NO. →	PB-1	PC-1	PD-1	PE-1	PF-1
CODE NO. ↓					
76251	1	1	1	1	1
76252	2	2	1	2	2
76507	1	3	1	3	1
76508	2	4	1	4	2
76509	1	5	1	5	1
76510	2	6	1	6	2

Illustration of Sub Assemblies

Index of Sub-Assemblies

Part Numbers

Index of Sub Assemblies

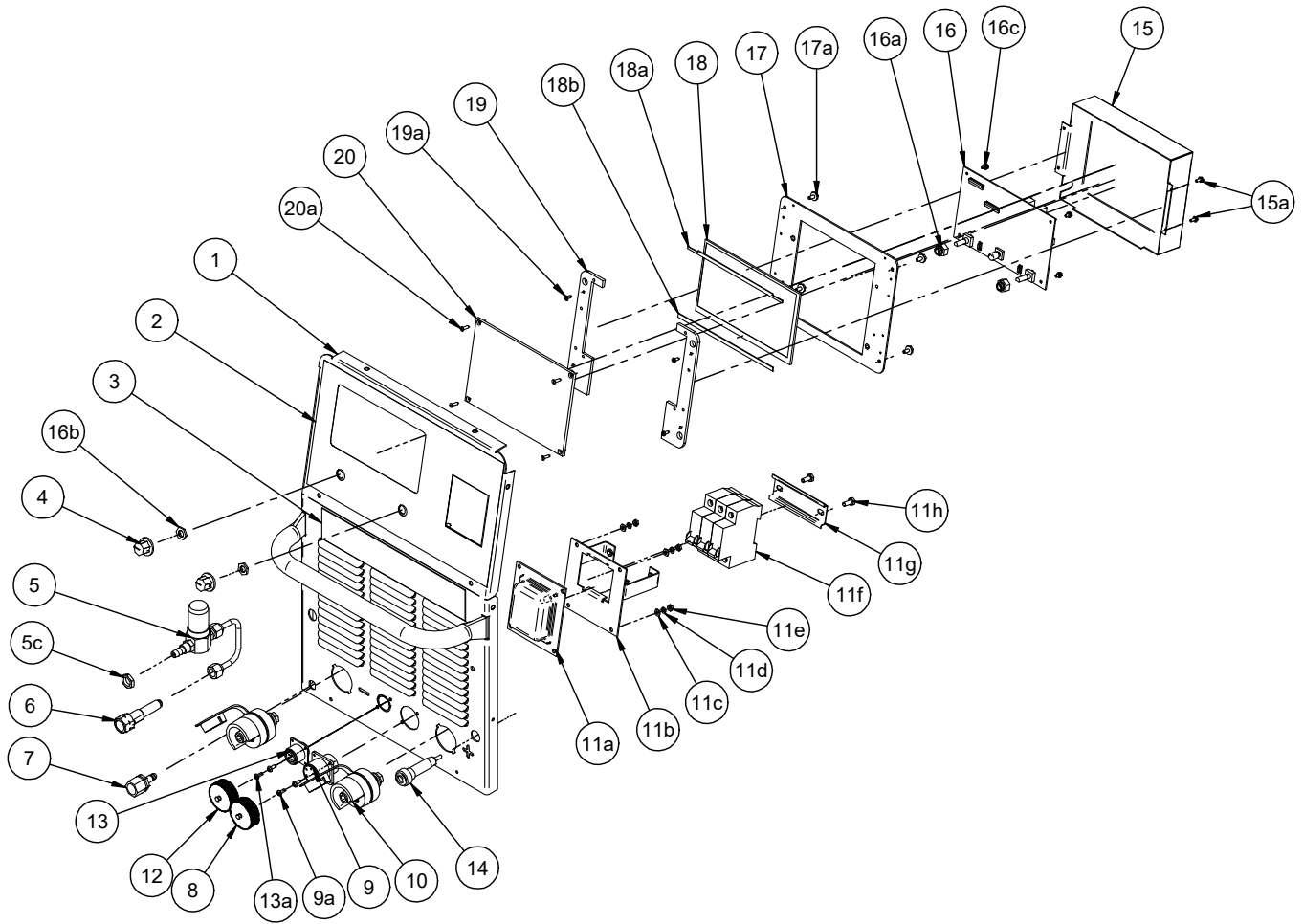
Part Numbers

Index of Sub Assemblies

Part Numbers

Index of Sub Assemblies

Part Numbers



OPTIMARC® AC/DC 350-TP



ITEM	DESCRIPTION	PART NO.	QTY.	1	2					76251	1
1	Case Front Welded Assembly	G5874-12	1	X	X					76252	2
1a	ST4.8x13 Hex Self Tapping Screw (Not Shown)	S26738-2	2	X	X					76507	1
2	Control Panel Decal	G6082-55	1	X	-					76508	2
2	Control Panel Decal	G6082-56	1	-	X					76509	1
3	AC/DC 350-TP Decal	G6082-57	1	X	X					76510	2
4	Knob	S28748-12	2	X	X						
5	Water Valve Assembly, Includes:	M22042-7	1	X	X						
5a	Water Valve	NSS	1	X	X						
5b	Connect Tube (with two 7/16-20 UNF Nuts)	NSS	1	X	X						
5c	M12 Hex Nut	NSS	1	X	X						
6	Water Hose Nipple	S26912-14	1	X	X						
6a	M14 Lock Washer (Not Shown)	S26639-19	1	X	X						
6b	M14 Hex Nut (Not Shown)	S26640-14	1	X	X						
7	Gas Nozzle Assembly, Includes:	S26912-9	1	X	X						
7a	Gas Hose Nipple	NSS	1	X	X						
7b	M12 Lock Washer (Not Shown)	NSS	1	X	X						
7c	M12 Hex Nut (Not Shown)	NSS	1	X	X						
8	Dust Cover	S30264-2	1	X	X						
9	Remote Harness Assembly – J7, Includes:	G8305-1	1	X	X						
9b	6 Pin Connector S28574-1	NSS	1	X	X						
9c	Toroidal Core (Not Shown)	7FS19316-3	3	X	X						
9a	ST3.9x8 Hex Self Tapping Screw	S26738-7	2	X	X						
10	Output Connector	M22415-10	2	X	X						
11a	Switch Cover	S27281	1	X	X						
11b	Switch Bracket	M21705	1	X	X						
11c	M4 Plain Washer	S26638-2	4	X	X						
11d	M4 Lock Washer	S26639-2	4	X	X						
11e	M4 Hex Nut	S26640-2	4	X	X						
11f	Line Switch	S27016	1	X	X						
11g	Din Rail	7FS27200	1	X	X						
11h	M5x12 Combined Screw	S28798-4	2	X	X						
12	* Dustproof Cover	S30264-1 *	1	X	X						
13	* Cooler Control Harness-J7, Includes:	G8305-29 *	1	X	X						
13-2	* 4 Pin connector (Female)	S28574-4 *	1	X	X						
13a	* AST3.9x8 Self Tapping Screw	S26738-7 *	2	X	X						
14	* 10KV Black Round High Voltage Socket	S28756-P-38 *	1	X	X						
15	Dustproof Cover	M25456-3	1	X	X						
15a	M3x10 Combined Screw	S28798-6	4	X	X						
See next page for more.											

NOTE: Use only the parts marked “X” in the column under the heading number called for in the model index page.

NSS – Not Sold Separately

* Not present on machine manufactured before March 2023.

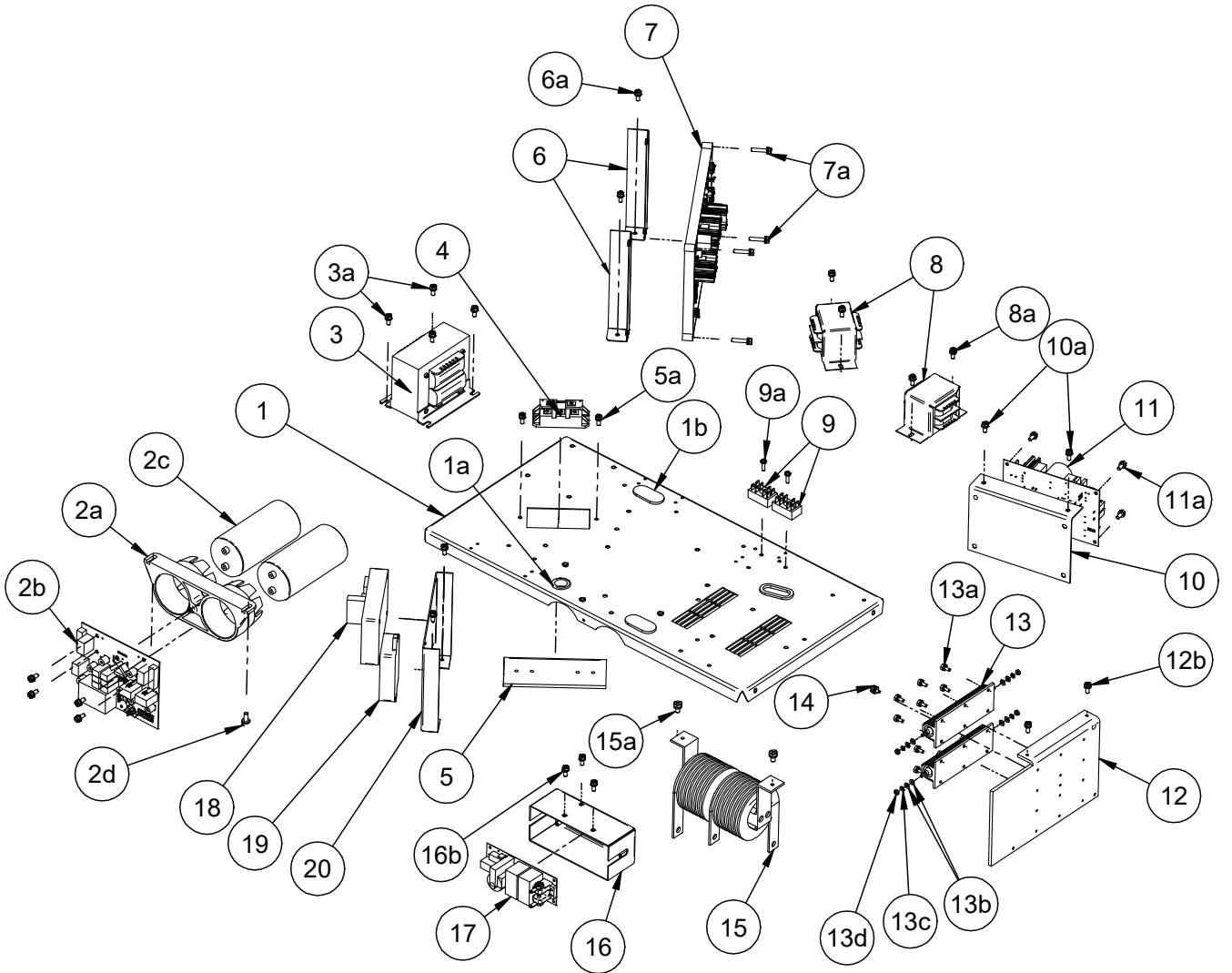
Index of Sub Assemblies
Sub Assembly Illustration

(Continued)

ITEM	DESCRIPTION	PART NO.	QTY.	1	2				76251	1
	Display Board Assembly, Includes:	7FL16640-1	1	X	X				76252	2
16	TFT Display Drive Board PCB	S31891	1	X	X				76507	1
16a	Nut	NSS	2	X	X				76508	2
16b	M10 Hex Nut	NSS	2	X	X				76509	1
16c	M3x6 Combined Screw	NSS	4	X	X				76510	2
16d	Button Cap (Not Shown)	NSS	1	X	X					
17	Back Bracket for Screen	NSS	1	X	X					
18	TFT Display Screen	NSS	1	X	X					
18a	EVA Strip Seal 165mm	NSS	1	X	X					
18b	EVA Strip Seal 165mm	NSS	2	X	X					
18c	Insulation Paper (Not Shown)	NSS	1	X	X					
19	Plexiglass Bracket for Screen	NSS	2	X	X					
19a	M3x6 Flat Head Philips Screw	NSS	4	X	X					
20	Plexiglass Plate	NSS	1	X	X					
20a	M3x12 Flat Head Philips Screw	NSS	4	X	X					
17a	M4x8 Combined Screw	S26641-38	4	X	X					
17b	M4 Plain Washer (Not Shown)	S26638-2	4	X	X					
17c	M4 Lock Washer (Not Shown)	S26639-2	4	X	X					
21	Display Board Harness - J14 (Not Shown)	G8305-4	1	X	X					
22	Water Inlet Decal (Not Shown)	S26743-22	1	X	X					
23	Water/Gas Outlet Decal (Not Shown)	S26743-17	1	X	X					
24	Gas Hose (Not Shown)	E4306-2	1	X	X					
25	Hose Clamp (Not Shown)	S26911	2	X	X					

NOTE: Use only the parts marked "X" in the column under the heading number called for in the model index page.
NSS – Not Sold Separately

Index of Sub-Assemblies
 Sub Assembly Illustration
 Index of Sub-Assemblies
 Sub Assembly Illustration
 Index of Sub-Assemblies
 Sub Assembly Illustration
 Index of Sub-Assemblies
 Sub Assembly Illustration



OPTIMARC® AC/DC 350-TP



ITEM	DESCRIPTION	PART NO.	QTY.	1	2	3	4	5	6	76251
1	Divider Panel	G5926-11	1	X	X	X	X	X	X	1
1a	Grommet	7FT12380-4	1	X	X	X	X	X	X	
1b	Rubber Bushing	S26787-18	3	X	X	X	X	X	X	76252
1c	M5x12 Machine Screw (Not Shown)	S26641-4	4	X	X	X	X	X	X	2
2	Pre-charge and Capacitor Assembly, Includes:	7FM22737-1	1	-	X	-	X	-	X	
2	Pre-charge and Capacitor Assembly, Includes:	M22737-3	1	X	-	X	-	X	-	76507
2a	Capacitor Bracket	M24711	1	X	X	X	X	X	X	3
2b	Pre-charge Board	7FG6811-1	1	X	X	X	X	X	X	
2c	Electrolytic Capacitors	S28782-2	2	-	X	-	X	-	X	76508
2c	Electrolytic Capacitors	S28782-3	2	X	-	X	-	X	-	4
2d	M5x16 Combined Screw	S28798-5	2	X	X	X	X	X	X	
2e	M6 Plain Washer (Not Shown)	S26638-8	2	X	X	X	X	X	X	76509
3	Auxiliary Transformer	M21437-22	1	X	X	X	X	X	X	5
3a	M5x12 Combined Screw	S28798-4	4	X	X	X	X	X	X	
4	Input Rectifier	7FM15454-25	1	X	X	X	X	X	X	76510
4a	M5x16 Combined Screw	S28798-5	2	X	X	X	X	X	X	6
4b	Input MOV Assembly (Not Shown)	7FS27147-2	1	X	X	X	X	X	X	
5	Input Rectifier Heatsink	M21756-11	1	X	X	X	X	X	X	
5a	M5x12 Combined Screw	S28798-4	2	X	X	X	X	X	X	
6	Control PCB Bracket	L13173-20	2	X	X	X	X	X	X	
6a	M5x12 Combined Screw	S28798-4	2	X	X	X	X	X	X	
7	Control Board	7FS31892	1	X	X	-	-	-	-	
7	Control Board	S35713	1	-	-	X	X	X	X	
7a	M5x25 Combined Screw	S28798-15	4	X	X	X	X	X	X	
7b	Control Board J10 Harness (Not Shown)	G8305-3	1	X	X	X	X	X	X	
7c	Voltage Feedback Harness -J4 (Not Shown)	G8305-5	1	X	X	X	X	X	X	
7d	Control Board J1 Harness (Not Shown)	G8305-6	1	X	X	X	X	X	X	
7e	Control Board J2—Drive Board J1 Harness (Not Shown)	G8305-7	1	X	X	X	X	X	X	
7f	Control Board J12 Harness (Not Shown)	G8305-8	1	X	X	X	X	X	X	
7g	Control Board J13 Harness (Not Shown)	G8305-9	1	X	X	X	X	X	X	
7h	Control Board J3—Drive Board J2 Harness (Not Shown)	G8305-10	1	X	X	X	X	X	X	
7i	Control Board J9—Chopper Board J1 Harness (Not Shown)	G8305-10	1	X	X	X	X	X	X	
8	Auxiliary Transformer	M21437-15	2	X	X	X	X	X	X	
8a	M5x12 Combined Screw	S28798-4	4	X	X	X	X	X	X	
9	2x4 Connector	S29444-1	2	X	X	X	X	X	X	
9a	M4x16 Combined Screw	S28798-13	2	X	X	X	X	X	X	
10	Stabilizing Arc Board Bracket	L13173-29	2	X	X	X	X	X	X	
10a	M5x12 Combined Screw	S28798-4	2	X	X	X	X	X	X	
11	Varnished Stabilizing Arc Board	G8296-1	1	X	X	X	X	X	X	
11a	M4x8 Combined Screw	S26641-38	4	X	X	X	X	X	X	
11b	M4 Plain Washer (Not Shown)	S26638-2	4	X	X	X	X	X	X	
11c	M4 Lock Washer (Not Shown)	S26639-2	4	X	X	X	X	X	X	
11d	Stabilizing Arc Board Harness J4 (Not Shown)	G8305-16	1	X	X	X	X	X	X	

See next page for more.

NOTE: Use only the parts marked “X” in the column under the heading number called for in the model index page.
NSS – Not Sold Separately

Index of Sub Assemblies
 Sub Assembly Illustration
 Index of Sub Assemblies
 Sub Assembly Illustration
 Index of Sub Assemblies
 Sub Assembly Illustration
 Index of Sub Assemblies
 Sub Assembly Illustration

(Continued)

ITEM	DESCRIPTION	PART NO.	QTY.	1	2	3	4	5	6	76251
	Power Resistor Assembly, Includes:	M21375-5	1	X	X	X	X	X	X	1
12	L Type Aluminum Plate	M21756-23	1	X	X	X	X	X	X	
13	Resistor RX24N(150W 5% 7R)	S28753-P-23	2	X	X	X	X	X	X	76252
13a	M4x10 Combined Screw	S28798-3	12	X	X	X	X	X	X	2
13b	M4 Plain Washer	S26638-2	8	X	X	X	X	X	X	
13c	M4 Lock Washer	S26639-2	4	X	X	X	X	X	X	76507
13d	M4 Nut	S26640-2	4	X	X	X	X	X	X	3
13e	Harness W-0.75-210-2-7/257 (Not Shown)	NSS	1	X	X	X	X	X	X	
13f	Harness W-0.75-280-2-7/256 (Not Shown)	NSS	1	X	X	X	X	X	X	76508
13g	Harness W-0.75-380-2-2/211E (Not Shown)	NSS	1	X	X	X	X	X	X	4
13h	Harness W-0.75-60-2-2/221G (Not Shown)	NSS	1	X	X	X	X	X	X	
14	Thermostat	T13359-33	1	X	X	X	X	X	X	76509
14a	Thermal Joint Compound E1868 (Not Shown)	NSS	1	X	X	X	X	X	X	5
14b	M3x6 Combined Screw (Not Shown)	S28798-14	2	X	X	X	X	X	X	
12a	M5x16 Screw (Not Shown)	S26641-36	2	X	X	X	X	X	X	76510
12b	M5x12 Combined Screw	S28798-4	2	X	X	X	X	X	X	6
15	Choke	M25155-3	1	X	X	X	X	X	X	
15a	M6x12 Combined Screw	S28798-10	2	X	X	X	X	X	X	
16	HF Board Box	M24919-1	1	X	X	X	X	X	X	
16a	Grommet Strip S26951-1, 90mm (Not Shown)	NSS	2	X	X	X	X	X	X	
16b	M5x12 Combined Screw	S28798-4	3	X	X	X	X	X	X	
17	HF Board Assembly	7FG7975-1	1	X	X	X	X	X	X	
17a	M4x10 Combined Screw	S28798-3	4	X	X	X	X	X	X	
18	Analog Isolated Interface Board	7FG9913-1	1	-	-	X	X	X	X	
18a	M4x19 Self Tapping Screw (Not Shown)	S26738-10	2	-	-	X	X	X	X	
18b	Power Harness (Not Shown)	G8305-22	1	-	-	X	X	X	X	
18c	Voltage Feedback Harness (Not Shown)	G8305-23	1	-	-	X	X	X	X	
18d	Hall Device Assembly (Not Shown)	S31894-1	1	-	-	X	X	X	X	
19	Parallel Board Assembly	G8286-3	1	-	-	-	-	X	X	
19a	M4x13 Self Tapping Screw (Not Shown)	S26738-3	2	-	-	-	-	X	X	
19b	Harness – J1 on Parallel Board / J15 on Control Board (Not Shown)	G8305-26	1	-	-	-	-	X	X	
20	Interface Board Bracket	M21756-42	1	-	-	X	X	X	X	
20a	M5x12 Combined Screw (Not Shown)	S28798-4	4	-	-	X	X	X	X	

NOTE: Use only the parts marked "X" in the column under the heading number called for in the model index page.
NSS – Not Sold Separately

Index of Sub-Assemblies
 Sub Assembly Illustration
 Index of Sub-Assemblies
 Sub Assembly Illustration
 Index of Sub-Assemblies
 Sub Assembly Illustration
 Index of Sub-Assemblies
 Sub Assembly Illustration

Index of Sub-Assemblies

Part Numbers

Index of Sub-Assemblies

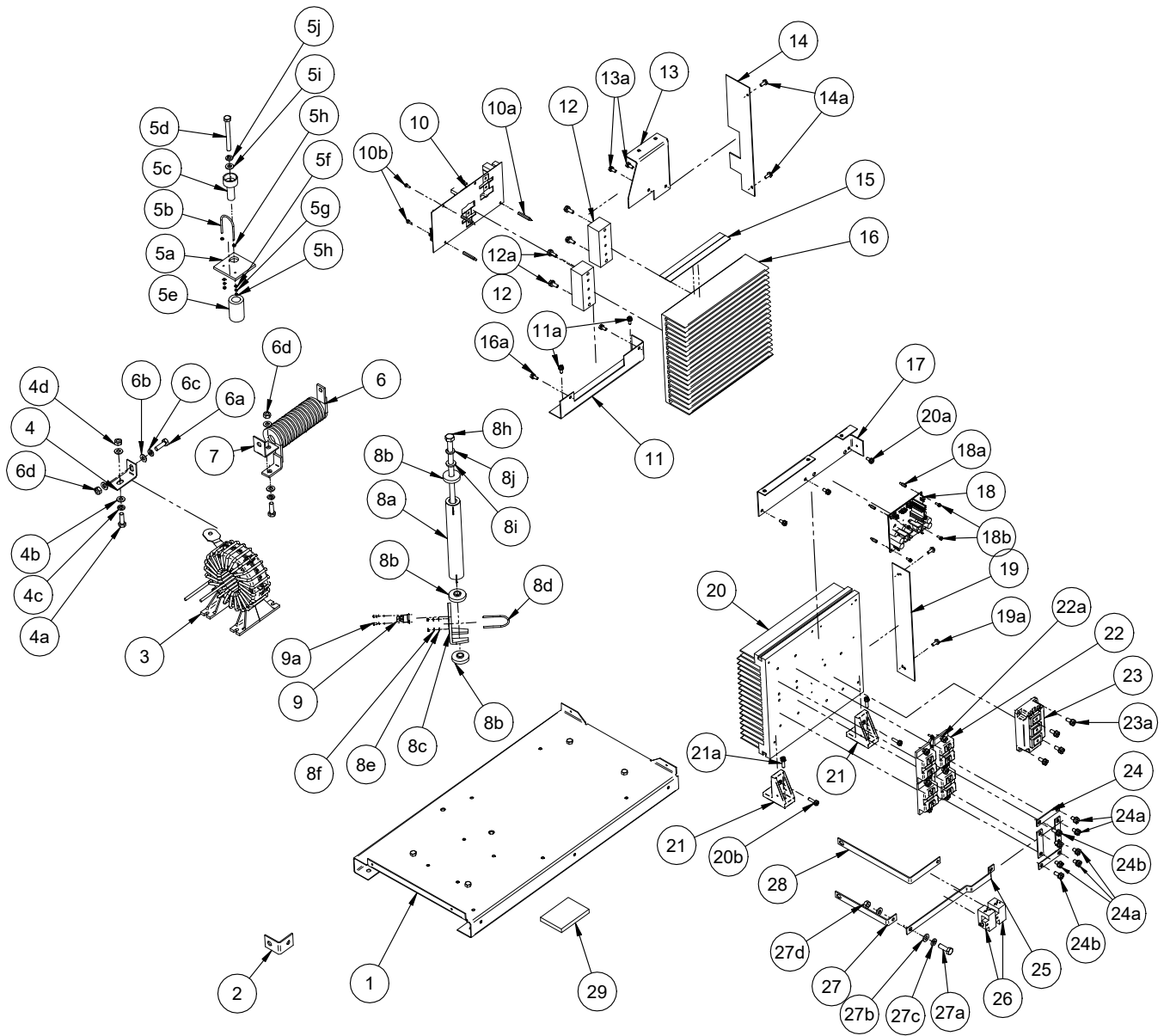
Part Numbers

Index of Sub-Assemblies

Part Numbers

Index of Sub-Assemblies

Part Numbers



OPTIMARC® AC/DC 350-TP



ITEM	DESCRIPTION	PART NO.	QTY.	1						76251	1
1	Base	G5872-5	1	X						76252	1
2	Copper Strap (#220, IGBT to Positive Terminal)	7FS27092-8	1	X						76507	
3	Main Transformer	L15759-5	1	X						76508	
3a	M5x16 Combined Screw (Not Shown)	S28798-5	4	X						76509	
3b	M6 Plain Washer (Not Shown)	S26638-8	4	X						76510	
4	Copper Strap (Main Transformer to Arc Start Coil)	S27092-36	1	X							
4a	M8x25 Hex Head Screw	S26641-8	1	X							
4b	M8 Plain Washer	S26638-4	2	X							
4c	M8 Lock Washer	S26639-4	1	X							
4d	M8 Hex Nut	S26640-4	1	X							
5a	Insulation Plate	M22727-5	1	X							
5b	Tube Clamp	S28416-4	1	X							
5b-2	Silicon Fiberglass Sleeve E4276-5/75mm (Included in 7FS28416-4) (Not Shown)	NSS	1	X							
5c	Insulation Tube	M22727-2	1	X							
5d	M8x80 Bolt	S26185-5	1	X							
5e	Insulation Tube	M22727-4	1	X							
5f	M3 Plain Washer	S26638-1	2	X							
5g	M3 Lock Washer	S26639-1	2	X							
5h	M3 Hex Nut	S26640-1	2	X							
5i	M8 Plain Washer	S26638-4	1	X							
5j	M8 Lock Washer	S26639-4	1	X							
6	Arc Start Coil	7FM25155-2	1	X							
6a	M8x25 Hex Head Screw	S26641-8	2	X							
6b	M8 Plain Washer	S26638-4	4	X							
6c	M8 Lock Washer	S26639-4	2	X							
6d	M8 Hex Nut	S26640-4	2	X							
7	Copper Strap (Arc Start Coil to Negative Terminal)	S27092-8	1	X							
8a	Resistor and Leads	7FS27175-5	1	X							
8b	Insulation Spacer	S26787-4	3	X							
8c	Small Aluminum Plate	M21756-22	1	X							
8d	Tube Clamp	S28416-4	1	X							
8e	M3 Plain Washer	S26638-1	2	X							
8f	M3 Lock Washer	S26639-1	2	X							
8g	M3 Hex Nut	S26640-1	2	X							
8h	M10x235 Bolt	S26185-13	1	X							
8i	M10 Plain Washer	S26638-6	1	X							
8j	M10 Lock Washer	S26639-6	1	X							
9	Thermostat	T13359-26	1	X							
9a	M3x6 Combined Screw	S28798-14	1	X							
10	Drive Board	7FG8290-1	1	X							
10a	Copper Mounting Pin	S26173-5	3	X							
10b	M3x10 Combined Screw	S28798-6	3	X							
10c	Drive Board Thermostat Harness - J3 (Not Shown)	G8305-18	1	X							
11	Support Bracket (Left Heatsink Bottom)	L13173-25	1	X							
11a	M5x12 Combined Screw	S28798-4	2	X							
See next page for more.											

NOTE: Use only the parts marked "X" in the column under the heading number called for in the model index page.
NSS – Not Sold Separately

Index of Sub-Assemblies
 Sub Assembly Illustration
 Index of Sub-Assemblies
 Sub Assembly Illustration
 Index of Sub-Assemblies
 Sub Assembly Illustration
 Index of Sub-Assemblies
 Sub Assembly Illustration

(Continued)

ITEM	DESCRIPTION	PART NO.	QTY.	1						76251	1
12	IGBT Module (MAGNACHIP)	7FM22734-4	2	X						76252	1
12a	M6x16 Combined Screw	S28798-7	4	X						76507	1
12b	Thermal Joint Compound (Not Shown)	NSS		X						76508	1
13	Support Bracket (Left Heatsink Top)	L13173-26	1	X						76509	1
13a	M5x12 Combined Screw	S28798-4	2	X						76510	1
14	Wind Shield (Left)	M25150-5	1	X							
14a	AST4.2x13 Self Tapping Screw	S26738-2	2	X							
15	EVA Foam Piece (E4714-1, 100mm)	NSS	3	X							
16	IGBT Heatsink	M24710-13	1	X							
16a	M5x12 Combined Screw	S28798-4	4	X							
17	Support Bracket (Right Heatsink Top)	L13173-27	1	X							
17a	M5x12 Combined Screw (Not Shown)	S28798-4	3	X							
18	Chopper Board	7FG8288-1	1	X							
18a	Copper Mounting Pin	S26173-4	4	X							
18b	M3x10 Combined Screw	S28798-6	4	X							
18c	Chopper Board Power Harness – J4 & J5 (Not Shown)	G8305-12	1	X							
18d	Chopper Board Thermostat Harness – J2 (Not Shown)	G8305-13	1	X							
19	Wind Shield (Right)	M25150-6	1	X							
19a	AST4.2x13 Self Tapping Screw	S26738-2	2	X							
20	Output Rectifier Heatsink	M16733-5	1	X							
20a	M5x12 Combined Screw	S28798-4	3	X							
20b	M5x20 Combined Screw	S28798-12	2	X							
21	Heatsink Support	7FM24920	2	X							
21a	M5x20 Combined Screw	S28798-12	2	X							
22	Output Diode	7FM22732-3	4	X							
22a	M6x16 Combined Screw	S28798-7	8	X							
22b	Thermal Joint Compound (Not Shown)	NSS		X							
23	IGBT Module	7FM22734-5	1	X							
23a	M6x16 Combined Screw	S28798-7	4	X							
23b	Thermal Joint Compound (Not Shown)	NSS		X							
24	Bended Copper Strap	S27092-29	4	X							
24a	M6x12 Combined Screw	S28798-10	6	X							
24b	M6x16 Combined Screw	S28798-7	2	X							
25	Bended Copper Strap	S27092-32	1	X							
26	HALL Device Assembly	S31894-1	1	X							
27	Bended Copper Strap	S27092-38	1	X							
27a	M8x25 Hex Head Screw	S26641-8	1	X							
27b	M8 Plain Washer	S26638-4	2	X							
27c	M8 Lock Washer	S26639-4	1	X							
27d	M8 Hex Nut	S26640-4	1	X							
27e	M6x16 Combined Screw (Not Shown)	S28798-7	1	X							
27f	M6 Plain Washer (Not Shown)	S26638-8	1	X							
27g	M6 Hex Nut (Not Shown)	S26640-8	1	X							
See next page for more.											

NOTE: Use only the parts marked "X" in the column under the heading number called for in the model index page.
NSS – Not Sold Separately

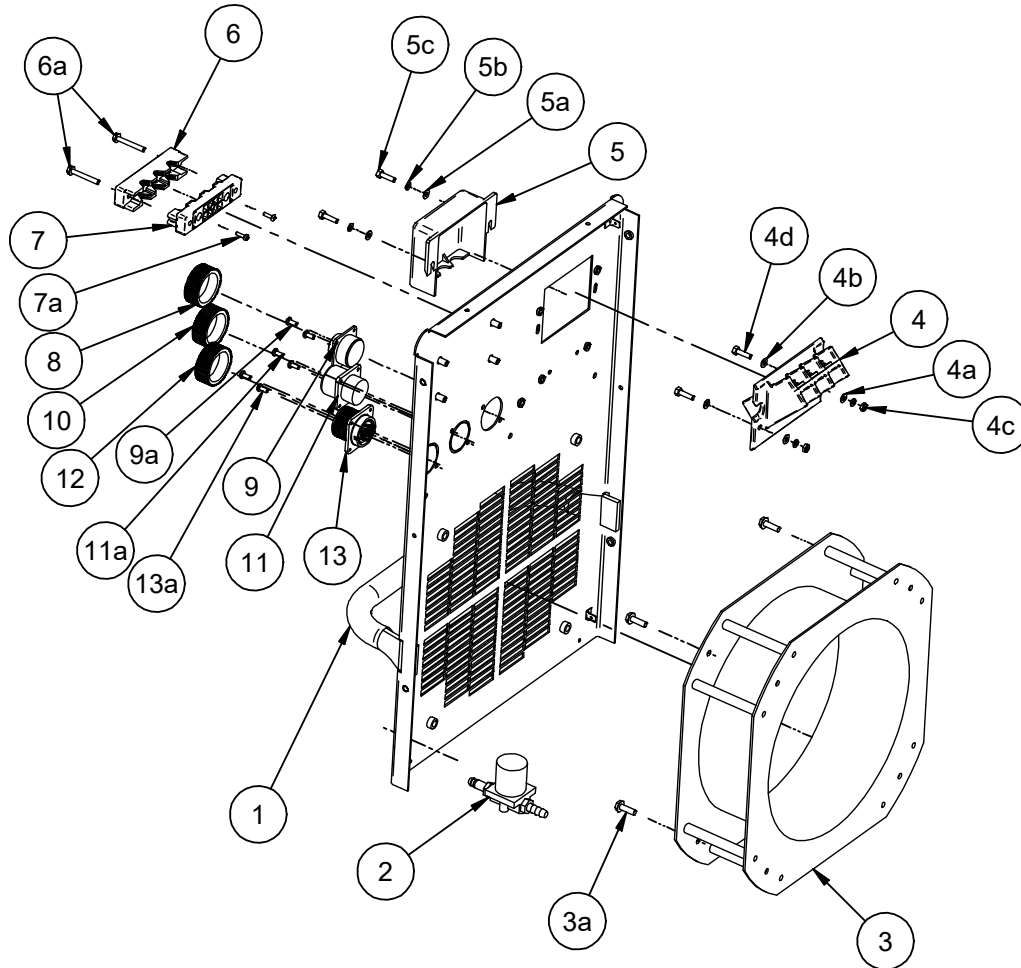
Index of Sub Assemblies
 Sub Assembly Illustration
 Index of Sub Assemblies
 Sub Assembly Illustration
 Index of Sub Assemblies
 Sub Assembly Illustration
 Index of Sub Assemblies
 Sub Assembly Illustration

(Continued)

ITEM	DESCRIPTION	PART NO.	QTY.	1					76251	1
28	Copper Strap	S27092-37	1	X					76252	1
28a	M8x25 Hex Head Screw (Not Shown)	S26641-8	1	X					76507	1
28b	M8 Plain Washer (Not Shown)	S26638-4	2	X					76508	1
28c	M8 Lock Washer (Not Shown)	S26639-4	1	X					76509	1
28d	M8 Hex Nut (Not Shown)	S26640-4	1	X					76510	1
29	* Arc Starting Coupling Circuit	G8305-27 *	1	X						
30	Output Rectifier Thermostat (Not Shown)	T13359-26	1	X						
30a	M3x10 Combined Screw (Not Shown)	S28798-6	2	X						
31	Output MOV Assembly (Not Shown)	7FS27147-8	1	X						

NOTE: Use only the parts marked "X" in the column under the heading number called for in the model index page.
 * Not present on machine manufactured before March 2023.

Index of Sub-Assemblies
 Sub Assembly Illustration
 Index of Sub-Assemblies
 Sub Assembly Illustration
 Index of Sub-Assemblies
 Sub Assembly Illustration
 Index of Sub-Assemblies
 Sub Assembly Illustration



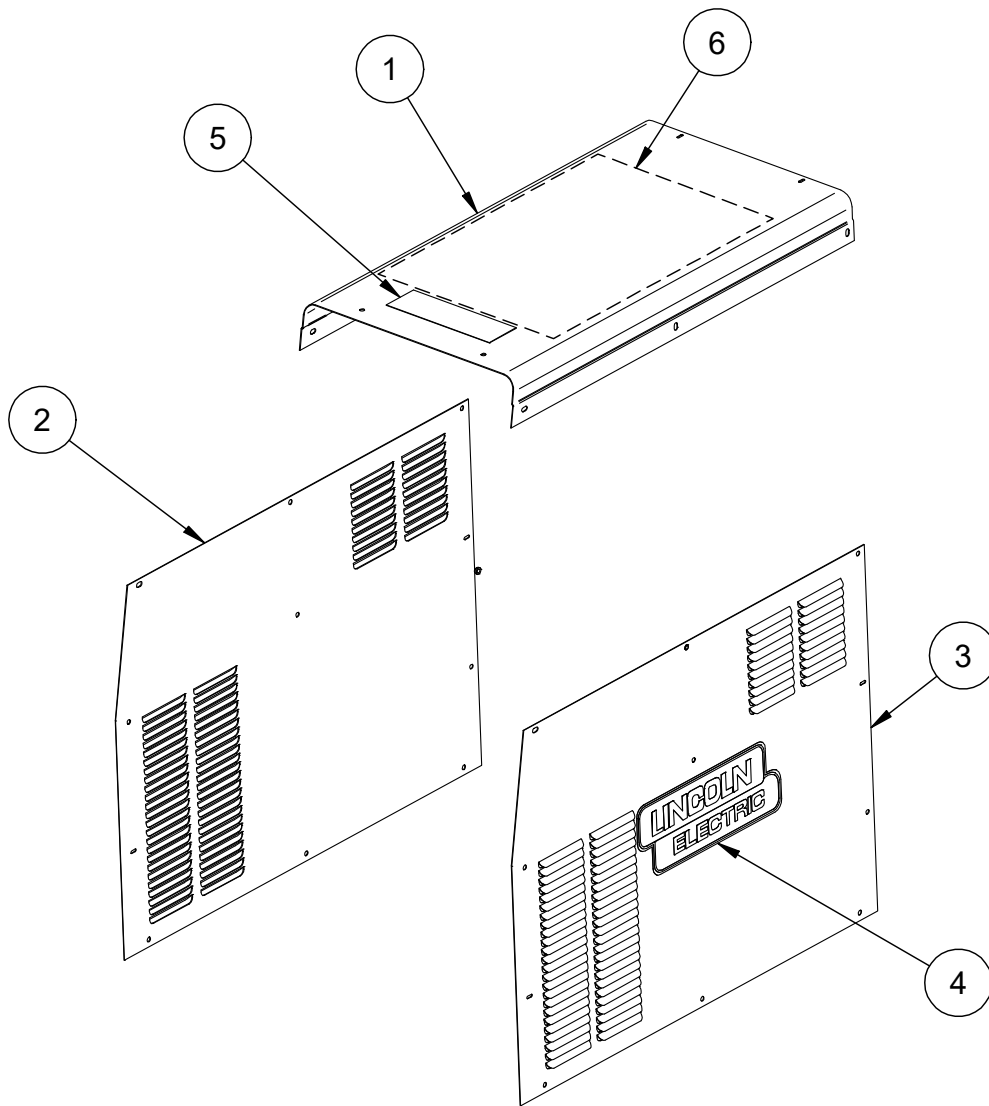
OPTIMARC® AC/DC 350-TP



ITEM	DESCRIPTION	PART NO.	QTY.	1	2	3	4	5	6	76251
1	Case Back Welded Assembly	G5873-13	1	X	X	X	X	X	X	1
1a	ST4.8x13 Self Tapping Screw (Not Shown)	S26738-2	2	X	X	X	X	X	X	
2	Solenoid Valve (Gas)	M22042-3	1	X	X	X	X	X	X	76252
2a	Plain Washer (Not Shown)	S26638-6	2	X	X	X	X	X	X	2
3	Fan, Includes:	M22731-3	1	X	X	X	X	X	X	
3-2	Fan Capacitor (Not Shown)	M22731-3-B	1	X	X	X	X	X	X	76507
3a	M5x20 Hex Head Screw	S26641-5	4	X	X	X	X	X	X	3
3b	M5 Plain Washer (Not Shown)	S26638-3	4	X	X	X	X	X	X	
3c	M5 Lock Washer (Not Shown)	S26639-3	4	X	X	X	X	X	X	76508
3d	M5 Hex Nut (Not Shown)	S26640-3	4	X	X	X	X	X	X	4
4	Input Cable Bracket	M20720-6	1	X	X	X	X	X	X	
4a	M4 Plain Washer	S26638-2	4	X	X	X	X	X	X	76509
4b	M4 Lock Washer	S26639-2	2	X	X	X	X	X	X	5
4c	M4 Hex Nut	S26640-2	2	X	X	X	X	X	X	
4d	M4x16 Hex Head Screw	S26641-2	2	X	X	X	X	X	X	76510
4e	Input Snubber Assembly (Not Shown)	S26781-2	1	X	X	X	X	X	X	6
5	Input Supply Box	M20720-2	1	X	X	X	X	X	X	
5a	M4 Plain Washer	S26638-2	2	X	X	X	X	X	X	
5b	M4 Lock Washer	S26639-2	2	X	X	X	X	X	X	
5c	M4x30 Hex Head Screw	S26641-3	2	X	X	X	X	X	X	
6	Input Holder Cover	M20720-4	1	X	X	X	X	X	X	
6a	M4x30 Hex Head Screw	S26641-3	2	X	X	X	X	X	X	
7	Input Holder Base	M20720-5	1	X	X	X	X	X	X	
7a	M3x10 Combined Screw	S28798-6	2	X	X	X	X	X	X	
8	Dustproof Cover	S30264-3	1	X	X	X	X	X	X	
9	RS485 Connector Harness - J8, Includes:	G8305-2	1	X	X	X	X	X	X	
9-2	9 Pins Connector S28574-2	NSS	1	X	X	X	X	X	X	
9a	AST3.9x8 Self Tapping Screw	S26738-7	2	X	X	X	X	X	X	
10	Dustproof Cover	S30264-2	1	-	-	X	X	X	X	
11	Signal Output Harness-J16 on Control Board / J4 on Interface Board, Includes:	G8305-28	1	-	-	X	X	X	X	
11-2	6 Pin Connector S28574-1	NSS	1	-	-	X	X	X	X	
11a	AST3.9x8 Self Tapping Screw	S26738-7	2	-	-	X	X	X	X	
12	Dustproof Cover	S30264-3	1	-	-	-	-	X	X	
13	Parallel Connector Harness-J2, Includes:	G8305-25	1	-	-	-	-	X	X	
13-2	14 Pin Connector	7FS12021-70	1	-	-	-	-	X	X	
13a	AST3.9x8 Self Tapping Screw	S26738-7	2	-	-	-	-	X	X	
14	Input Connection Decal (Not Shown)	S26724	1	-	X	-	X	-	X	
14	Input Connection Decal (Not Shown)	S26724-1	1	X	-	X	-	X	-	
15	Terminal Size 6 - 10 (Not Shown)	S26740-22	3	X	X	X	X	X	X	
16	Ground Decal (Not Shown)	S26732	1	X	X	X	X	X	X	
17	Gas Inlet Decal (Not Shown)	S26743-21	1	X	X	X	X	X	X	

NOTE: Use only the parts marked "X" in the column under the heading number called for in the model index page.
NSS – Not Sold Separately

Index of Sub Assemblies
 Sub Assembly Illustration
 Index of Sub Assemblies
 Sub Assembly Illustration
 Index of Sub Assemblies
 Sub Assembly Illustration
 Index of Sub Assemblies
 Sub Assembly Illustration



OPTIMARC® AC/DC 350-TP



ITEM	DESCRIPTION	PART NO.	QTY.	1	2					76251	1
1	Case Top	7FG5878-5	1	X	X					76252	2
1a	M5x12 Hex Washer Head Philips Screw (Not Shown)	S26641-4	8	X	X					76507	1
1b	ST4.8x13 Hex Self Tapping Screw (Not Shown)	S26738-2	2	X	X					76508	2
2	Left Case Side	7FG5879-7	1	X	X					76509	1
2a	M5x12 Hex Washer Head Philips Screw (Not Shown)	S26641-4	5	X	X					76510	2
2b	ST4.8x13 Hex Self Tapping Screw (Not Shown)	S26738-2	3	X	X						
3	Right Case Side	7FG5880-8	1	X	X						
3a	M5x12 Hex Washer Head Philips Screw (Not Shown)	S26641-4	5	X	X						
3b	ST4.8x13 Hex Self Tapping Screw (Not Shown)	S26738-2	3	X	X						
4	LE Logo	NSS	2	X	X						
5	Label – Case Top	M20952	1	X	-						
5	Label – Case Top	M20952-1	1	-	X						
6	Wiring Diagram	NSS	1	X	X						

NOTE: Use only the parts marked “X” in the column under the heading number called for in the model index page.
NSS – Not Sold Separately

Index of Sub-Assemblies
Sub Assembly Illustration
Index of Sub-Assemblies
Sub Assembly Illustration
Index of Sub-Assemblies
Sub Assembly Illustration
Index of Sub-Assemblies
Sub Assembly Illustration