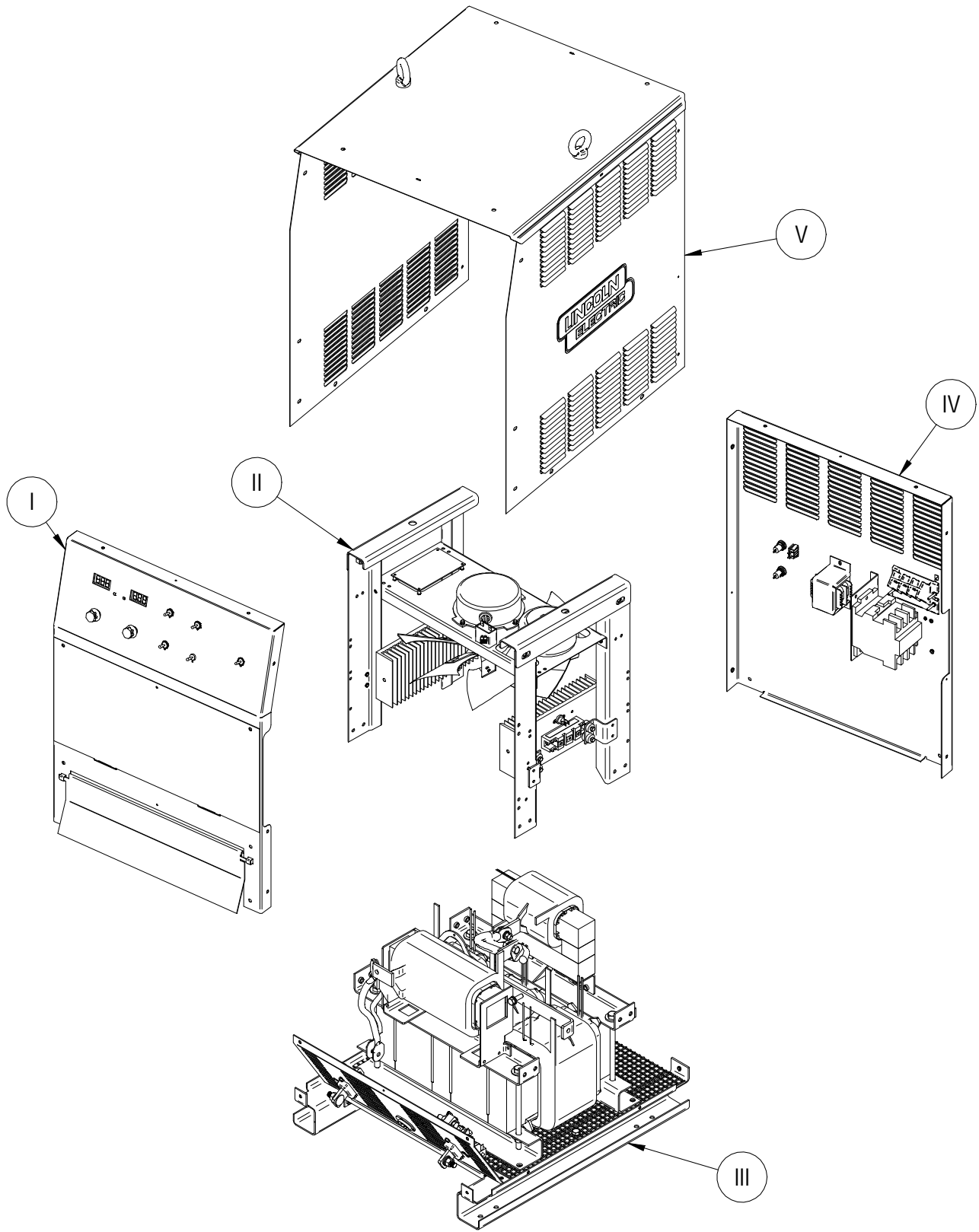


RETURN TO MAIN INDEX

# PARTS LIST FOR DURAWELD® 500



# ILLUSTRATION OF SUB-ASSEMBLIES



Index of Sub Assemblies  
Index of Sub Assemblies  
Index of Sub Assemblies

## DURAWELD® 500

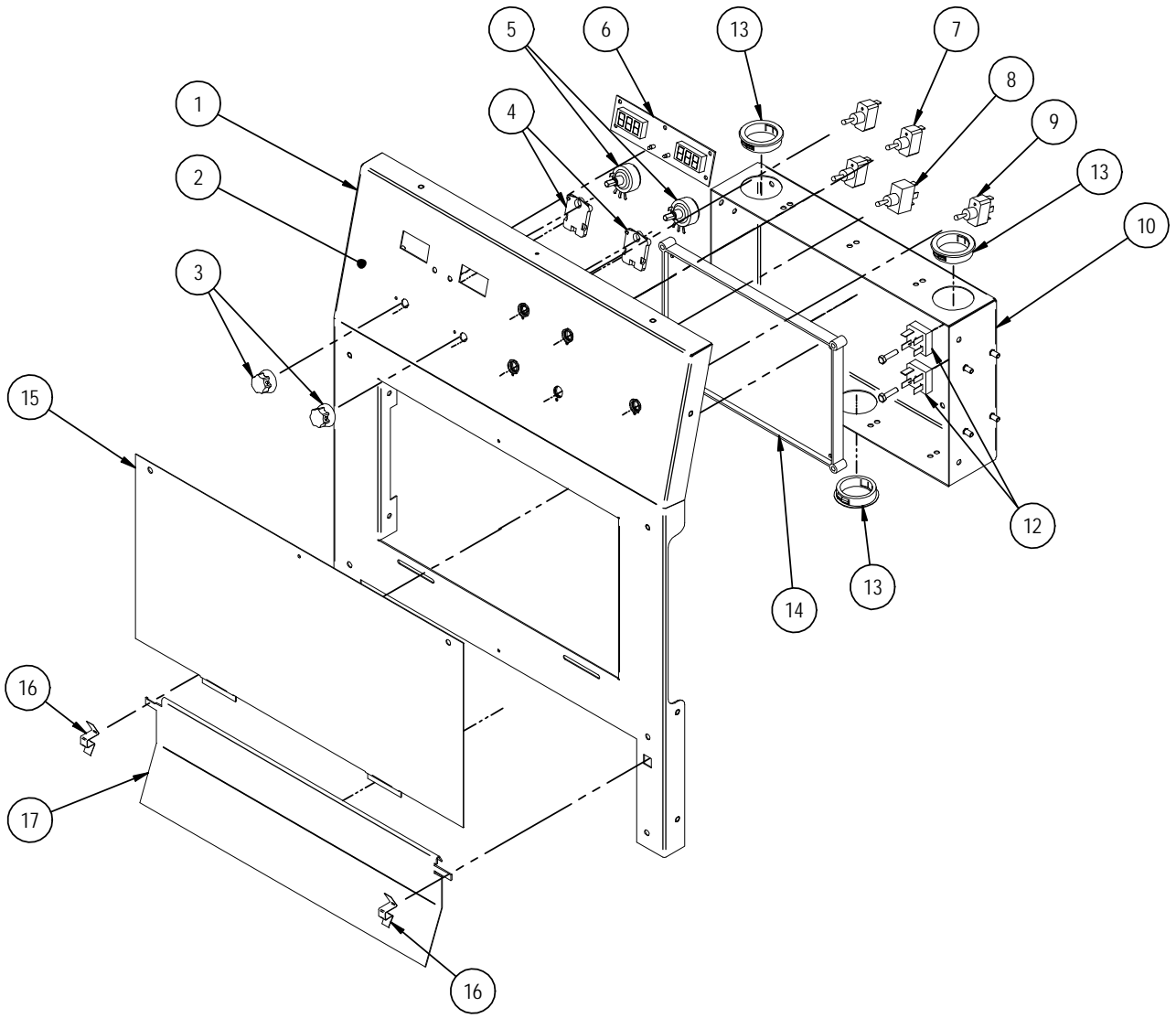
### For codes: 76187, 76293, 76296

Do Not use this Parts List for a machine if its code number is not listed. For any code numbers not listed, contact the Service Department via: [china\\_service@lincolnelectric.com](mailto:china_service@lincolnelectric.com).

Use the Illustration of Sub-Assemblies page and the table below to determine which sub assembly page and column the desired part is located on for your particular code machine.

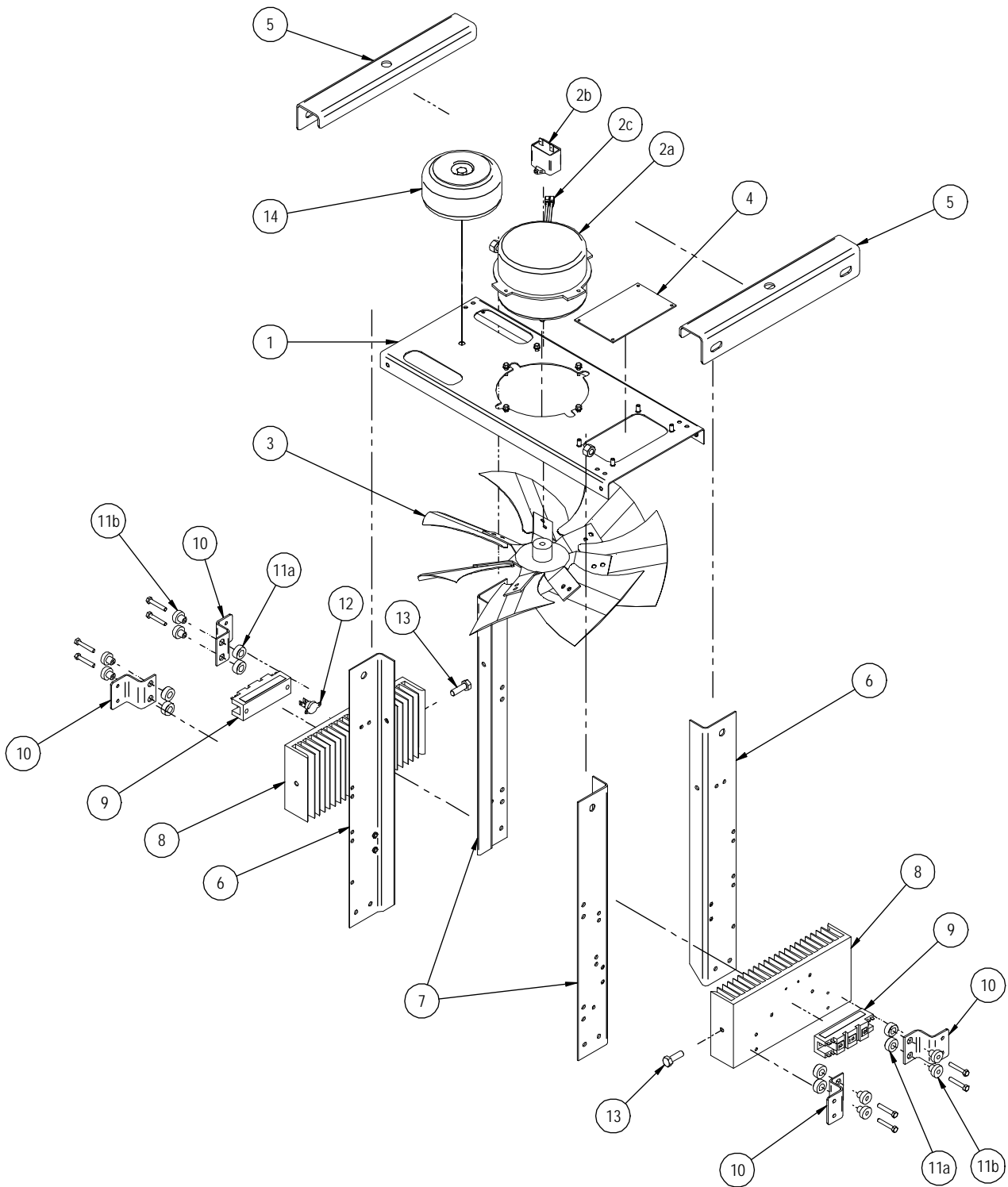
SUB ASSEMBLY ITEM NO. →	I	II	III	IV	V
SUB ASSEMBLY PAGE NAME →	Case Front Assembly	SCR Heatsink & Fan Bracket Assembly	Base & Center Assembly	Case Back Assembly	Wraparound Assembly
PAGE NO. →	PB-1	PC-1	PD-1	PE-1	PF-1
CODE NO. ↓					
76187 Serial Numbers Before Z1160601040	1	1	1	1	1
76187 Serial Numbers From Z1160601040	1	1	1	2	1
76293	2	3	2	2	1
76296	1	2	2	2	1

Illustration of Sub Assemblies



ITEM	DESCRIPTION	PART NO.	QTY.	1	2					76187	1
1	Front Panel	G5894-2	1	X	X					76293	2
2	Control Panel Decal	M24915-5	1	X	X					76296	1
3	Knob	T13639-6	2	X	X						
3a	O Ring	T13483-34	2	X	X						
4	Potentiometer Spacer	S18280	2	X	X						
5	Pot Harness – J4 (Not Shown), Includes: Potentiometer	G7702-8	1	X	X						
		T10812-119	2	X	X						
6	Display PCB Assembly	M25153-2	1	X	X						
6a	M4X10 Combined Screw (Not Shown)	S28798-3	4	X	X						
7	Toggle Switch, SPST	T10800-4	3	X	X						
8	Toggle Switch, SPDT	T10800-23	1	X	X						
9	Toggle Switch, DPST	T10800-47	1	X	X						
10	PCB Box	G5895-1	1	X	X						
10a	M5X12 Combined Screw (Not Shown)	S28798-4	4	X	X						
12	Diode-Bridge,35A,400V,F-W,1-Ph	T13637-6	2	X	X						
12a	M5X16 Combined Screw (Not Shown)	S28798-5	2	X	X						
12b	Power Harness – J2 (Not Shown)	G7702-4	1	X	X						
13	Bushing	T12380-1	3	X	X						
14	PCB Board Assembly	S29843	1	X	X						
14a	M5X30 Combined Screw (Not Shown)	S28798-8	4	X	X						
14b	UI Harness – J1, J10 & J12 (Not Shown) , Includes:	G7702-7	1	X	X						
14c	Toroidal Core (Not Shown)	S19316-3	1	X	X						
14d	Thermostat Harness – J6 & Fan Motor Input Leads etc. (Not Shown)	G7702-10	1	X	X						
15	Mid Panel	L13197-1	1	X	X						
15a	Front Panel Decal (Not Shown)	M24915-4	1	X	X						
15b	M5X12 Hex Washer Head Phillips (Not Shown)	S26641-4	2	X	X						
15c	ST4.8X13 Washer Faced Hex Self (Not Shown)	S26738-2	1	X	X						
16	Spring Clip	S27348	2	X	X						
17	Output Stud Cover	G5896-1	1	X	X						
17a	Output Stud Cover Decal (Not Shown)	M21728-6	1	-	X						
17a	Indication Label (Not Shown)	M21728-11	1	X	-						
17b	Minus Decal (Not Shown)	S30243-2	1	X	-						
17c	Wire Feeder Mark (Not Shown)	S30243-4	1	X	-						
17d	Plus Decal (Not Shown)	S30243-1	1	X	-						

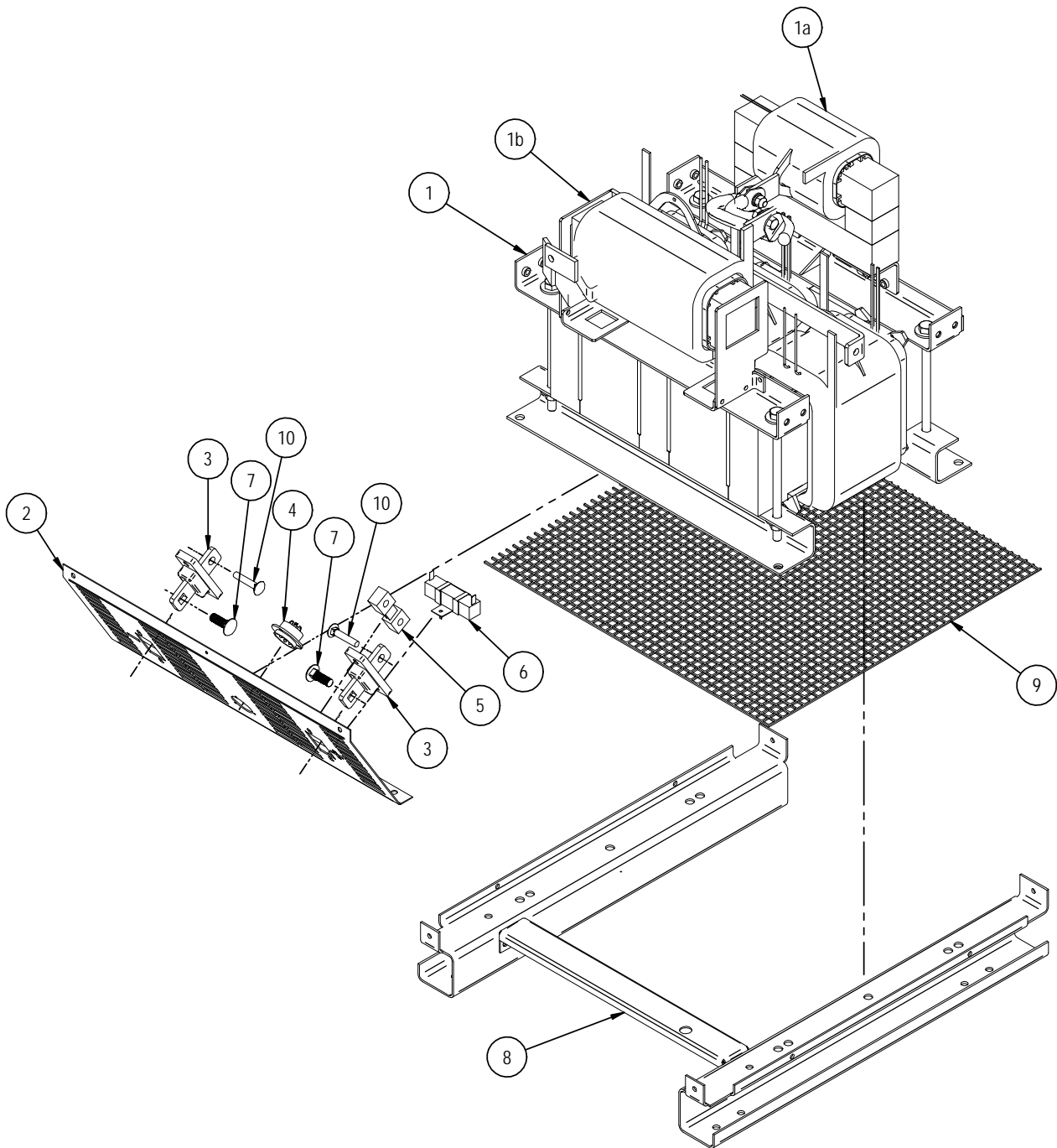
**NOTE:** Use only the parts marked "X" in the column under the heading number called for in the model index page.



ITEM	DESCRIPTION	PART NO.	QTY.	1	2	3			76187	1
1	Fan Bracket Weld Assembly	L13199-3	1	X	X	X			76293	3
1a	M5X12 Hex Washer Head Phillips (Not Shown)	S26641-4	4	X	X	X			76296	2
2	Fan Motor, Includes:	M20713-2	1	X	X	X				
2a	Motor - M20713, Includes:	NSS	1	X	X	X				
2b	Capacitor	M20713-B	1	X	X	X				
2c	Terminal Size 0.4 - 1.0	NSS	2	X	X	X				
2d	M4X10 Combined Screw (Not Shown)	S28798-3	5	X	X	X				
3	Aluminum Fan blade D=350mm(Inner D=8mm)	L13328-1	1	X	X	X				
3a	Set Screw (Not Shown)	S27307-1	1	X	X	X				
4	Synchronous PCB Assembly	M25154-2	1	X	X	X				
4a	M4X10 Combined Screw (Not Shown)	S28798-3	4	X	X	X				
4b	Zero Harness - J7 on Control PCB & J1 on Synchronous PCB(Not Shown)	G7702-3	1	X	X	X				
5	Upper Lift Balance Channel	M21478-4	2	X	X	X				
5a	M8X20 Combined Screw (Not Shown)	S28798-1	4	X	X	X				
6	Lift Bale Support Bracket	G6001-4	2	X	X	X				
6a	M6X12 Combined Screw (Not Shown)	S28798-10	4	X	X	X				
7	Lift Bale Support Bracket	G6001-3	2	X	X	X				
7a	M6X12 Combined Screw (Not Shown)	S28798-10	4	X	X	X				
8	Heat Sink	L13200-2	2	X	X	X				
8a	M5X12 Combined Screw (Not Shown)	S28798-4	8	X	X	X				
9	SCR Module	M20714-4	2	X	X	X				
9a	M5X16 Combined Screw (Not Shown)	S28798-5	4	X	X	X				
9b	E2529 Electrical Joint Compound (Not Shown)	NSS		X	X	X				
9c	SCR Harness - J8 & J9 (Not Shown)	G7702-9	1	X	X	X				
10	Heat Sink Bracket	S27067-1	4	X	X	X				
10a	M5X30 Combined Screw (Not Shown)	S28798-8	8	X	X	X				
11a	Mounting Spacer A	S26178-1	8	X	X	X				
11b	Mounting Spacer B	S26178-2	8	X	X	X				
12	Thermostat (9ET13359-13)	T13359-26	1	X	X	X				
12a	M3X10 Combined Screw (Not Shown)	S28798-6	2	X	X	X				
13	M8X30 Hex Head Screw	S26641-41	2	X	X	X				
13a	M8 Plain Washer (Not Shown)	S26638-4	2	X	X	X				
13b	M8 Lock Washer (Not Shown)	S26639-4	2	X	X	X				
14	Aux Transformer (220VAC, 1A for Heater)	M21437-16	1	X	X	-				
14	Aux Transformer (220VAC, 1A for Heater)	M21437-20	1	-	-	X				
14a	Heater Receptacle Harness	G7702-13	1	X	-	-				
14a	Heater Receptacle Harness	G7702-14	1	-	-	X				
14a	Heater Receptacle Harness	G7702-17	1	-	X	-				

**NOTE:** Use only the parts marked "X" in the column under the heading number called for in the model index page.

**NSS** – Not Sold Separately





ITEM	DESCRIPTION	PART NO.	QTY.	1	2					76187	1
1	Transformer & Choke Assembly, Includes:	G6105-2	1	X	-					76293	2
1	Transformer & Choke Assembly, Includes:	G6105-3	1	-	X					76296	2
1a	Balance Choke Weld Assembly (M21548-2 No Varnish)	M21548-3	1	X	X						
1b	Output Choke Weld Assembly (M21483-2 No Varnish)	M21483-4	1	X	X						
1c	M8X25 Hex Head Screw (Not Shown)	S26641-8	4	X	X						
1d	M8 Plain Washer (Not Shown)	S26638-4	4	X	X						
1e	M8 Lock Washer (Not Shown)	S26639-4	4	X	X						
1f	Connect Cable (Output Choke to Negative Terminal) (Not Shown)	G7702-21	2	X	X						
1g	Connect Cable (Main Transformer to Shunt) (Not Shown)	G7702-22	1	X	X						
2	Output Stud Plate	G5897-2	1	X	X						
2a	Combined Screw (Not Shown)	S28798-10	2	X	X						
2b	M5X12 Hex Washer Head Phillips (Not Shown)	S26641-4	2	X	X						
2c	ST4.8X13 Washer Faced Hex Self (Not Shown)	S26738-2	1	X	X						
3	Output Stud	M20710-1	2	X	X						
3a	Output Snubber Assembly (Not Shown)	S26781-9	1	X	X						
3b	M5 Hex Head Screw (Not Shown)	S26641-5	4	X	X						
3c	M5 Plain Washer (Not Shown)	S26638-3	8	X	X						
3d	M5 Lock Washer (Not Shown)	S26639-3	4	X	X						
3e	M5 Hex Nut (Not Shown)	S26640-3	4	X	X						
3f	M6 Plain Washer (Not Shown)	S26638-8	4	X	X						
4	Wire Feeder Harness – J3 (Not Shown), Includes:	G7702-6	1	X	X						
	Control Socket (Six Pins)	S26179	1	X	X						
4a	M3 Flat Head Philips Screw (Not Shown)	S26641-1	3	X	X						
4b	M3 Plain Washer (Not Shown)	S26638-1	3	X	X						
4c	M3 Lock Washer (Not Shown)	S26639-1	3	X	X						
4d	M3 Hex Nut (Not Shown)	S26640-1	3	X	X						
5	Shunt	S26194-1	1	X	X						
5a	M8X40 Hex Head Screw (Not Shown)	S26641-9	1	X	X						
5b	M8 Plain Washer (Not Shown)	S26638-4	2	X	X						
5c	M8 Lock Washer (Not Shown)	S26639-4	1	X	X						
5d	M8 Hex Nut (Not Shown)	S26640-4	1	X	X						
5e	Low-voltage Harness – J5 (Not Shown) , Includes:	G7702-12	1	X	X						
5f	Toroidal Core (Not Shown)	S19316-3	1	X	X						
6	Resistance	M20716-10	1	X	X						
6a	M4X10 Combined Screw (Not Shown)	S28798-3	1	X	X						
7	M10X22 Carriage Bolt	S27072-1	2	X	X						
7a	M10 Plain Washer (Not Shown)	S26638-6	2	X	X						
7b	M10 Lock Washer (Not Shown)	S26639-6	2	X	X						
7c	M10 Hex Nut (Not Shown)	S26640-6	2	X	X						
8	Base Welded Assembly	G5891-2	1	X	X						
9	Galvanized Wire Mesh	G7976-1	1	X	X						
10	M8X40 Carriage Bolt	S27072-2	2	X	X						
10a	M8 Plain Washer (Not Shown)	S26638-4	2	X	X						
10b	M8 Lock Washer (Not Shown)	S26639-4	2	X	X						
10c	M8 Hex Nut (Not Shown)	S26640-4	2	X	X						
11	Harness - Aux Transformer Input Leads (Not Shown)	G7702-1	1	X	X						
12	Harness - Aux Transformer Output Leads etc. (Not Shown)	G7702-2	1	X	X						

**NOTE:** Use only the parts marked “X” in the column under the heading number called for in the model index page.

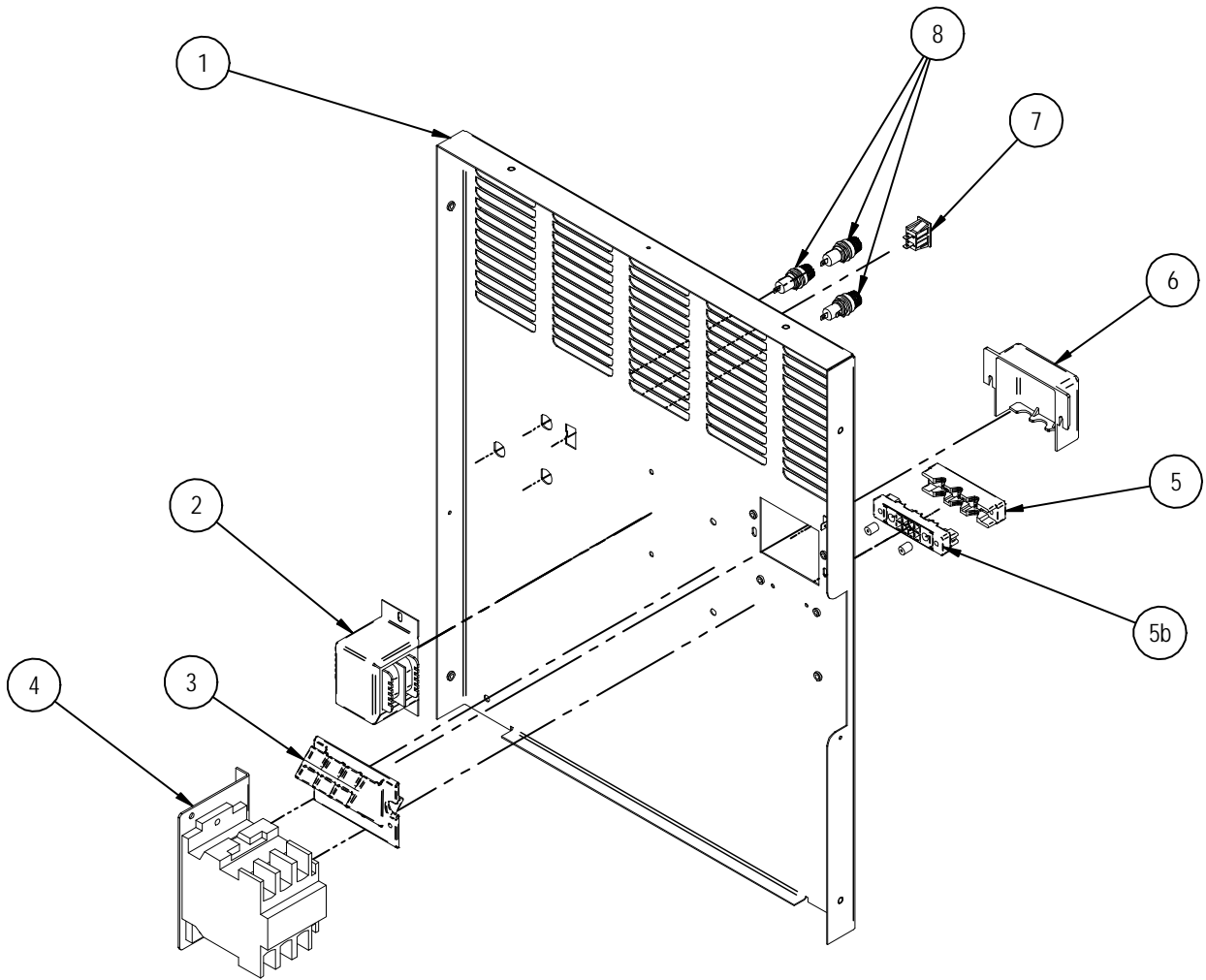
Index of Sub Assemblies  
 Sub Assembly Illustration  
 Index of Sub Assemblies  
 Sub Assembly Illustration  
 Index of Sub Assemblies  
 Sub Assembly Illustration  
 Index of Sub Assemblies  
 Sub Assembly Illustration

Index of Sub-Assemblies  
Part Numbers

Index of Sub-Assemblies  
Part Numbers

Index of Sub-Assemblies  
Part Numbers

Index of Sub-Assemblies  
Part Numbers



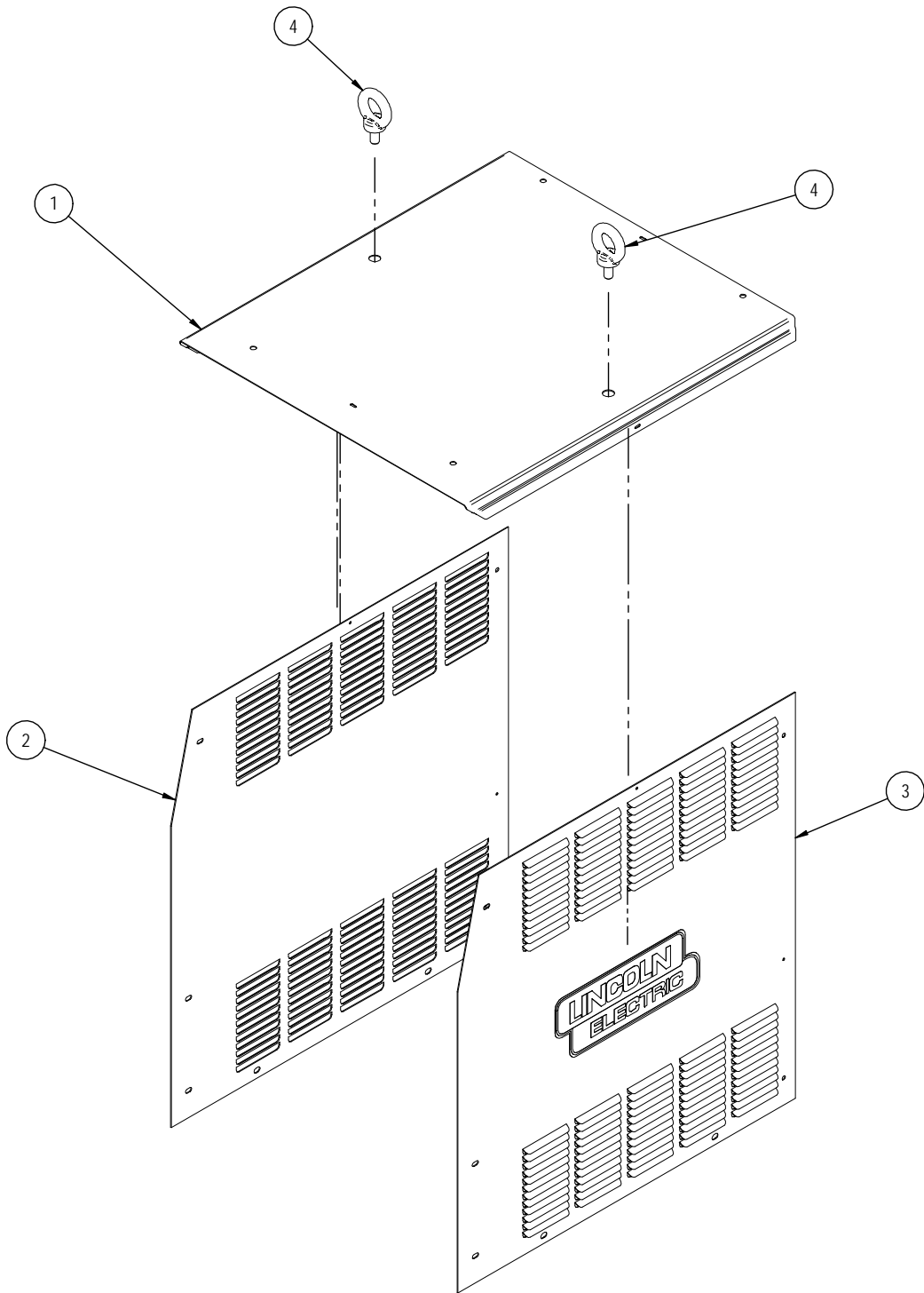
ITEM	DESCRIPTION	PART NO.	QTY.	1	2				76187*	1
1	Case Back Insert Assembly	G6233-3	1	X	X				76187**	2
2	Aux Transformer	M21437-13	1	X	X				76293	2
2a	M5X12 Hex Washer Head Phillips (Not Shown)	S26641-4	2	X	X				76296	2
2b	M5 Plain Washer (Not Shown)	S26638-3	2	X	X					
2c	M5 Lock Washer (Not Shown)	S26639-3	2	X	X					
2d	M5 Hex Nut (Not Shown)	S26640-3	2	X	X					
3	Input Block	M20720-6	1	X	X					
3a	Input Snubber Assembly (Not Shown)	S26781-2	1	X	X					
3b	M4X30 Hex Washer Head Philips (Not Shown)	S26641-3	2	X	X					
3c	M4 Plain Washer (Not Shown)	S26638-2	4	X	X					
3d	M4 Lock Washer (Not Shown)	S26639-2	2	X	X					
3e	M4 Hex Nut (Not Shown)	S26640-2	2	X	X					
4	Contractor	M12161-98	1	X	X					
4a	Contacto Bracket	S27299-2	1	X	X					
4b	M5X16 Combined Screw (Not Shown)	S28798-5	2	X	X					
4c	Contacto Harness (Not Shown)	G7702-11	1	X	X					
5	Cable Holder Cover	M20720-4	1	X	X					
5a	M4X30 Hex Head Screw (Not Shown)	S26641-3	2	X	X					
5b	Cable Holder Base	M20720-5	1	X	X					
5c	M3X10 Combined Screw (Not Shown)	S28798-6	2	X	X					
6	Input Supply Box	M20720-2	1	X	X					
6a	M4X10 Combined Screw (Not Shown)	S28798-3	2	X	X					
7	Receptacle	S26506-2	1	X	X					
8	Fuse Holder	T12386-6	2	X	-					
8	Fuse Holder	T12386-6	3	-	X					
8a	Fuse,8A,125V,Slow Blow (Not Shown)	T10728-55	1	X	X					
8b	8A Fuse Decal (Not Shown)	S26743-18	1	X	X					
8c	Fuse,2A,250V,Fb,1.25X0.25 (Not Shown)	T10728-20	1	X	-					
8c	Fuse,2A,250V,Fb,1.25X0.25 (Not Shown)	T10728-20	2	-	X					
8d	Decal, Heater And Fuse (Not Shown)	S26743-2	1	X	X					
9	Decal, Connection Diagram (Not Shown)	S26724-1	1	X	X					
10	Ground Decal (Not Shown)	S26732	1	X	X					

**NOTE:** Use only the parts marked "X" in the column under the heading number called for in the model index page.

\* **Serial Numbers before Z1160601040**

\*\* **Serial Numbers from Z1160601040**

Index of Sub Assemblies  
 Sub Assembly Illustration  
 Index of Sub Assemblies  
 Sub Assembly Illustration  
 Index of Sub Assemblies  
 Sub Assembly Illustration  
 Index of Sub Assemblies  
 Sub Assembly Illustration



ITEM	DESCRIPTION	PART NO.	QTY.	1						76187	1
1	Top Roof	L13196-3	1	X						76293	1
1a	M5X12 Hex Washer Head Phillips (Not Shown)	S26641-4	4	X						76296	1
1b	ST4.8X13 Washer Faced Hex Self (Not Shown)	S26738-2	2	X							
1c	Label, Case Top (Not Shown)	M20952	1	X							
2	Left Side Panel	L13194-3	1	X							
2a	M5X12 Hex Washer Head Phillips (Not Shown)	S26641-4	8	X							
2b	ST4.8X13 Washer Faced Hex Self (Not Shown)	S26738-2	1	X							
2c	Decal, LE Logo (Not Shown)	NSS	1	X							
3	Right Side Panel	L13195-4	1	X							
3a	M5X12 Hex Washer Head Phillips (Not Shown)	S26641-4	8	X							
3b	ST4.8X13 Washer Faced Hex Self (Not Shown)	S26738-2	1	X							
3c	Decal, LE Logo	NSS	1	X							
3d	Wiring Schematic Decal (Not Shown)	NSS	1	X							
4	Eyebolt	S26786	2	X							
4a	M12 Rubber Washer (Not Shown)	S26787	2	X							

**NOTE:** Use only the parts marked "X" in the column under the heading number called for in the model index page.  
**NSS** – Not Sold Separately

Index of Sub-Assemblies  
 Sub Assembly Illustration  
 Index of Sub-Assemblies  
 Sub Assembly Illustration  
 Index of Sub-Assemblies  
 Sub Assembly Illustration  
 Index of Sub-Assemblies  
 Sub Assembly Illustration