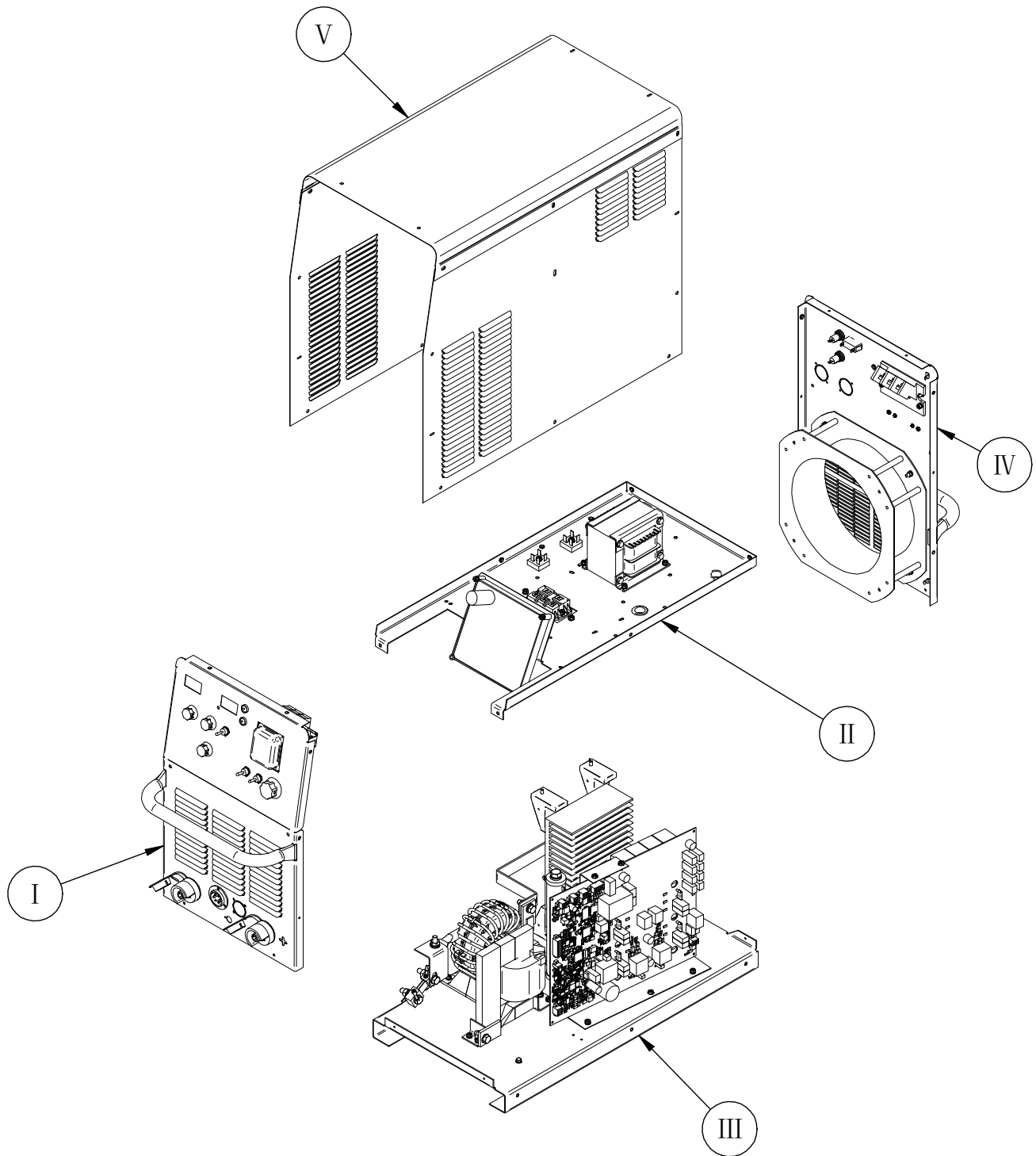


PARTS LIST FOR OPTIMARC® CV500P



ILLUSTRATION OF SUB-ASSEMBLIES



OPTIMARC® CV500P



Index of Sub Assemblies
Index of Sub Assemblies
Index of Sub Assemblies

OPTIMARC® CV500P

For code: 76343, 76344

Do Not use this Parts List for a machine if its code number is not listed. For any code numbers not listed, contact the Service Department via: china_service@lincolnelectric.com.

Use the Illustration of Sub-Assemblies page and the table below to determine which sub assembly page and column the desired part is located on for your particular code machine.

SUB ASSEMBLY ITEM NO. →	I	II	III	IV	V
SUB ASSEMBLY PAGE NAME →	Case Front Assembly	Divider Panel Assembly	Base & Center Assembly	Case Back Assembly	Wraparound Assembly
PAGE NO. →	PB-1	PC-1	PD-1	PE-1	PF-1
CODE NO. ↓					
76343	1	1	1	1	1
76344	2	2	1	2	1

Illustration of Sub Assemblies

Index of Sub-Assemblies

Part Numbers

Index of Sub Assemblies

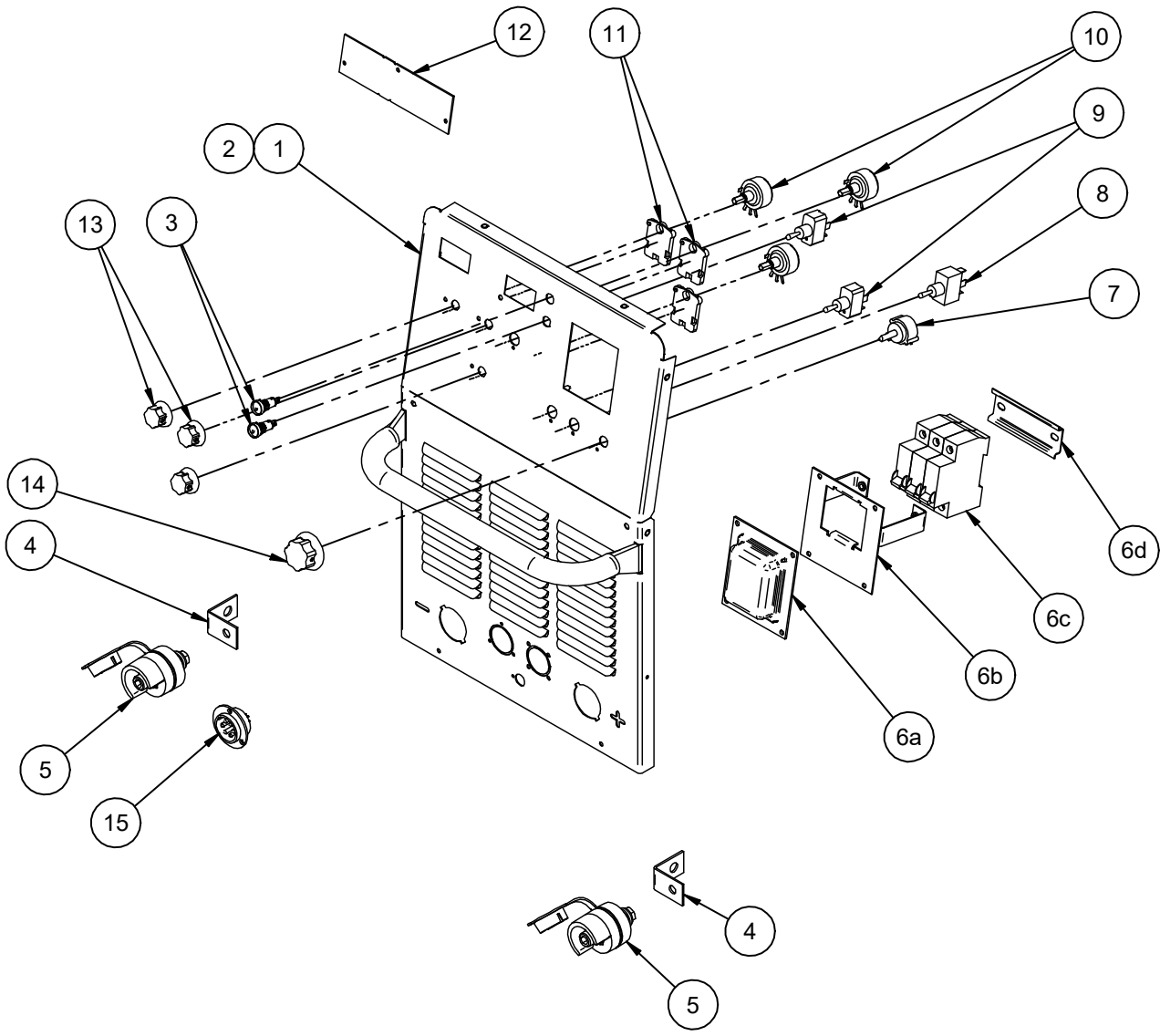
Part Numbers

Index of Sub Assemblies

Part Numbers

Index of Sub Assemblies

Part Numbers



ITEM	DESCRIPTION	PART NO.	QTY.	1	2					76343	1
1	Case Front Welded Assembly	G5874-14	1	X	X					76344	2
1a	ST4.8x13 Hex Self Tapping Screw (Not Shown)	S26738-2	2	X	X						
2	Front Panel Decal	G6082-70	1	X	-						
2	Front Panel Decal	G6082-71	1	-	X						
3	Switchboard Harness - J20,J21,J23,J27, J7 on Control PCB, Includes:	G8321-2	1	X	X						
3a	Yellow LED Assembly	S29850-1	1	X	X						
3b	Bi-color LED Assembly	S29850-2	1	X	X						
4	Copper Strap	S27092-8	2	X	X						
5	Female Twist Mates Assembly	M22415-10	2	X	X						
6a	Switch Cover	S27281	1	X	X						
6b	Switch Bracket Welded Assembly	M21705	1	X	X						
6c	Line Switch	S27016	1	X	X						
6d	Din Rail	S27200	1	X	X						
6e	M5x12 Combined Screw (Not Shown)	S28798-4	2	X	X						
6f	M4 Plain Washer (Not Shown)	S26638-2	4	X	X						
6g	M4 Lock Washer (Not Shown)	S26639-2	4	X	X						
6h	M4 Hex Nut (Not Shown)	S26640-2	4	X	X						
7	Switch Harness – J3&J4 on Control Board, Includes: 5 Position Rotary Switch (Weld Mode Switch)	G6043-47 S16670-22	1 1	X X	X X						
8	Toggle Switch, SPDT	S29831-2	1	X	X						
8a	Locking Ring (Not Shown)	S28340-1	1	X	X						
9	Toggle Switch, SPST	S29831-3	2	X	X						
9a	Locking Ring (Not Shown)	S28340-1	2	X	X						
10	Display & Pot Harness – J2&J6 on Control Board, Includes:	G6043-35	1	X	X						
10a	Potentiometer	T10812-127	3	X	X						
11	Potentiometer Spacer	S18280	3	X	X						
12	Display Board Assembly	S29835	1	X	X						
13	Knob	S28748-12	3	X	X						
13a	O Ring (Not Shown)	T13483-34	3	X	X						
14	Knob	S28748-8	1	X	X						
14a	O Ring (Not Shown)	T13483-34	1	X	X						
15	Wire Feeder Harness – J5 on Control PCB, Includes:	G6043-37	1	X	X						
15a	6 Pin Control Socket	S26179	1	X	X						
15b	M3 Flat Head Philips Screw (Not Shown)	S26641-1	3	X	X						
15c	M3 Plain Washer (Not Shown)	S26638-1	3	X	X						
15d	M3 Lock Washer (Not Shown)	S26639-1	3	X	X						
15e	M3 Hex Nut (Not Shown)	S26640-1	3	X	X						
16	Blank Decal (Not Shown)	S30243-5	1	X	X						

NOTE: Use only the parts marked “X” in the column under the heading number called for in the model index page.

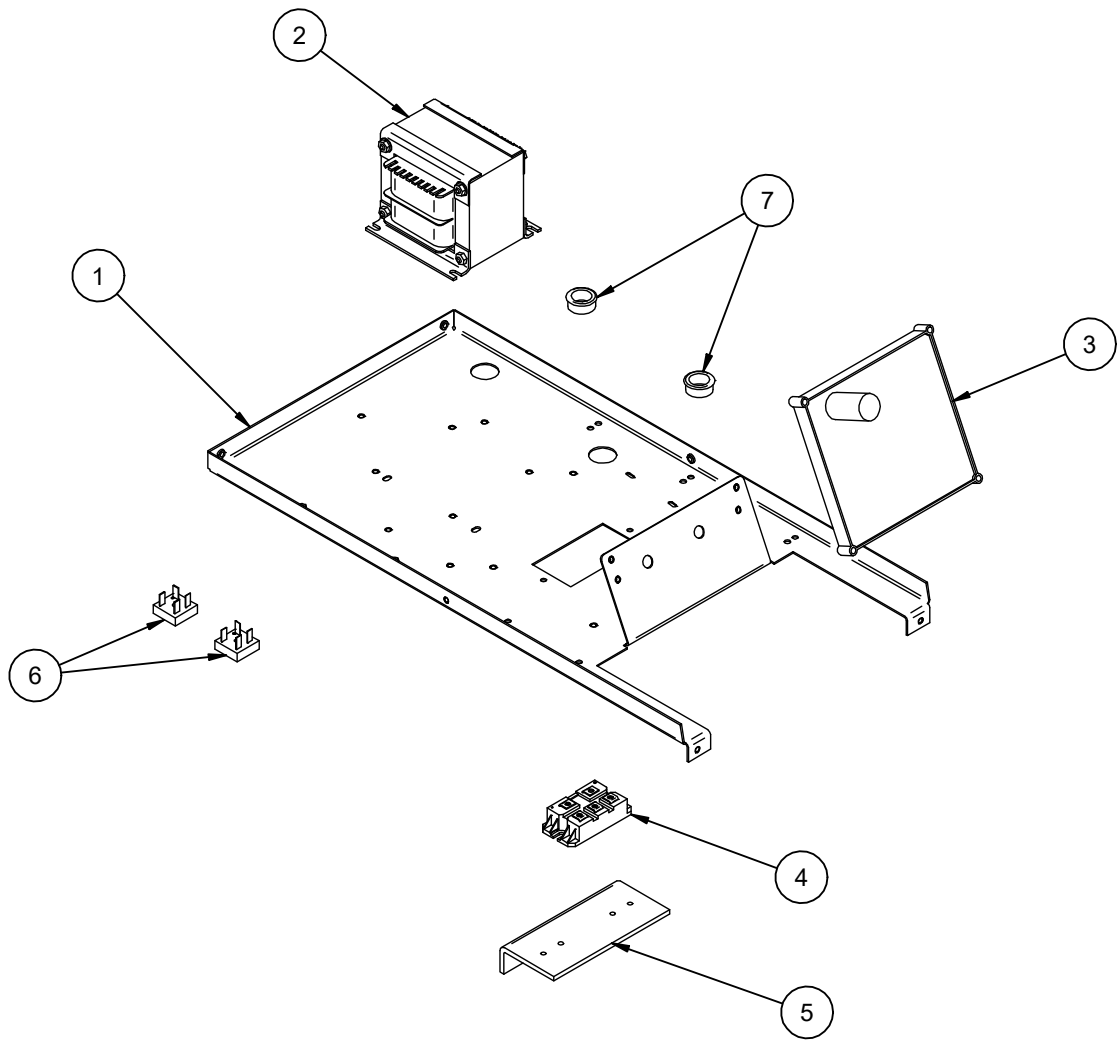
Index of Sub-Assemblies
 Sub Assembly Illustration
 Index of Sub-Assemblies
 Sub Assembly Illustration
 Index of Sub-Assemblies
 Sub Assembly Illustration
 Index of Sub-Assemblies
 Sub Assembly Illustration

Index of Sub-Assemblies
Part Numbers

Index of Sub Assemblies
Part Numbers

Index of Sub Assemblies
Part Numbers

Index of Sub Assemblies
Part Numbers



OPTIMARC® CV500P



ITEM	DESCRIPTION	PART NO.	QTY.	1	2					76343	1
1	Divider Panel	G5926-14	1	X	X					76344	2
1a	M5x12 Hex Washer Head Screw (Not Shown)	S26641-4	4	X	X						
2	Auxiliary Transformer	M21437-23	1	X	-						
2	Auxiliary Transformer	M21437-24	1	-	X						
2a	M5x12 Combined Screw (Not Shown)	S28798-4	4	X	X						
3	Control PC Board	S30893	1	X	X						
3a	M5x30 Combined Screw (Not Shown)	S28798-8	2	X	X						
4	Input Rectifier	M15454-25	1	X	X						
4a	M5x16 Combined Screw (Not Shown)	S28798-5	2	X	X						
4b	MOV Assembly (Not Shown)	S27147-5	1	X	X						
5	Input Rectifier Heat Sink	M21756-11	1	X	X						
5a	M5x12 Combined Screw (Not Shown)	S28798-4	2	X	X						
6	Diode-Bridge	T13637-6	2	X	X						
6a	M5x20 Screw (Not Shown)	S26641-5	2	X	X						
6b	M5 Plain Washer (Not Shown)	S26638-3	2	X	X						
6c	M5 Lock Washer (Not Shown)	S26639-3	2	X	X						
7	Grommet	T12380-4	2	X	X						
8	Aux Harness (Not Shown)	G6043-1	1	X	X						
9	Gas Control Harness – J1 on Control PCB (Not Shown)	G6043-33	1	X	X						
10	Control PC Board Fuse Harness (Not Shown)	G6043-55	1	X	X						

NOTE: Use only the parts marked "X" in the column under the heading number called for in the model index page.

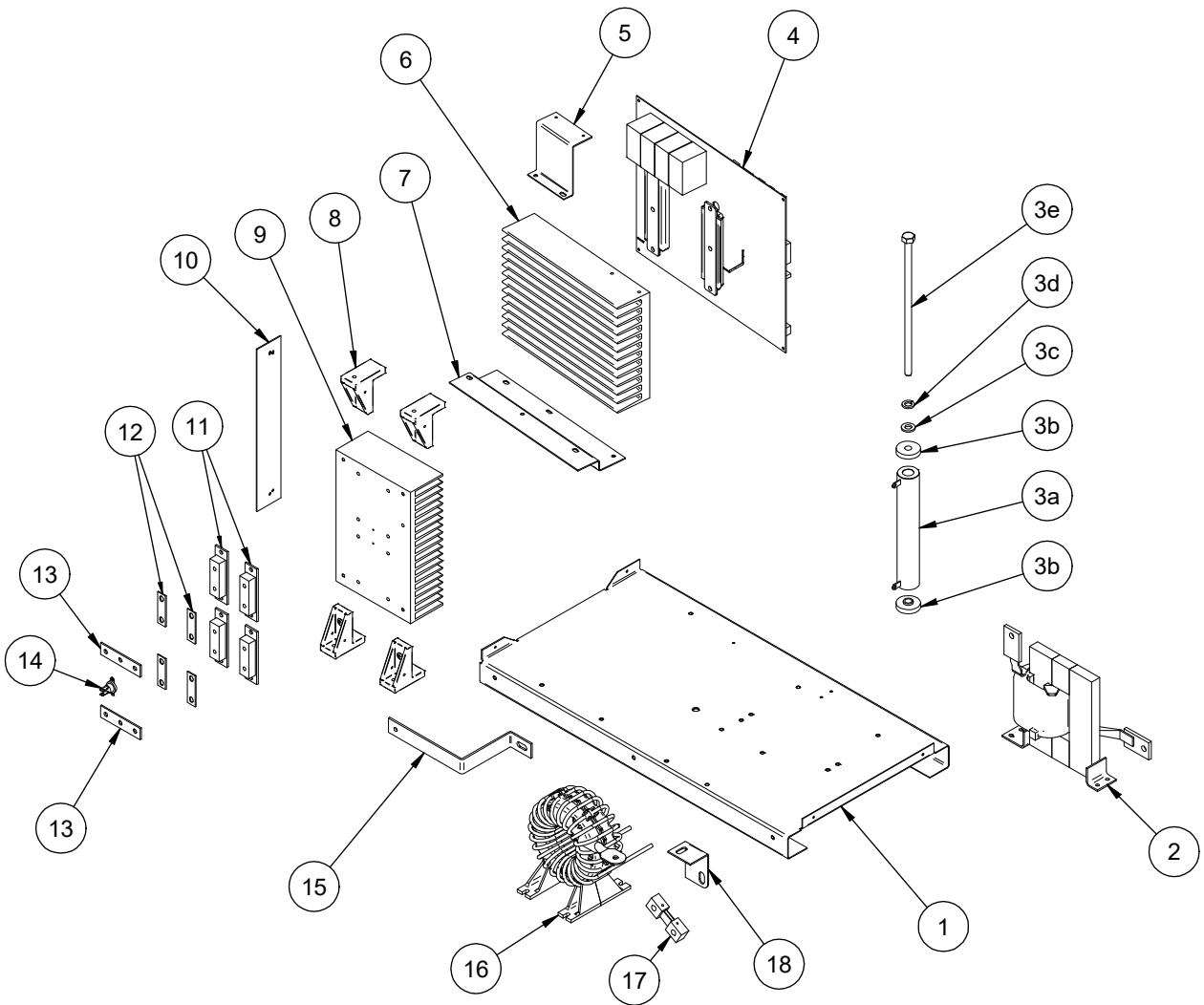
Index of Sub-Assemblies
 Sub Assembly Illustration
 Index of Sub-Assemblies
 Sub Assembly Illustration
 Index of Sub-Assemblies
 Sub Assembly Illustration
 Index of Sub-Assemblies
 Sub Assembly Illustration

Index of Sub-Assemblies
Part Numbers

Index of Sub-Assemblies
Part Numbers

Index of Sub-Assemblies
Part Numbers

Index of Sub-Assemblies
Part Numbers



ITEM	DESCRIPTION	PART NO.	QTY.	1						76343	1
1	Base	G5872-6	1	X						76344	1
2	Choke Assembly	L13166-7	1	X							
2a	M5x12 Combined Screw (Not Shown)	S28798-4	4	X							
3	Resistor Assembly, Includes:	S27175-3	1	X							
3a	Resistor	M20716-7	1	X							
3b	PET	S26787-4	2	X							
3c	M10 Plain Washer	S26638-6	1	X							
3d	M10 Lock Washer	S26639-6	1	X							
3e	M10 Bolt	S26185-13	1	X							
3f	M10 Hex Nut (Not Shown)	S26640-6	1	X							
4	Switchboard Assembly, Includes:	G5932-6	1	X							
4a	Switchboard	S30242	1	X							
4a	Torx Button Head M6 Screw (Not Shown)	S25930-8	6	X							
4b	M6 Plain Washer (Not Shown)	S26638-8	6	X							
4c	M6 Lock Washer (Not Shown)	S26639-11	6	X							
4d	Thermal Joint Compound E1868 (Not Shown)	NSS		X							
5	Top Switchboard Bracket	M21756-9	1	X							
5a	M5x12 Combined Screw (Not Shown)	S28798-4	2	X							
6	Switchboard Heatsink	M24710-14	1	X							
7	Bottom Switchboard Bracket	M21756-16	1	X							
7a	M5x12 Combined Screw (Not Shown)	S28798-4	3	X							
8	Output Rectifier Assembly, Includes:	L13174-15	1	X							
8a	Support Bracket	M24920	4	X							
8a	M5x20 Combined Screw (Not Shown)	S28798-12	4	X							
9	Output Rectifier Heatsink	M24710-16	1	X							
10	Wind Shield (Right)	M25150-6	1	X							
10a	ST4.8x13 Hex Self Tapping Screw (Not Shown)	S26738-2	2	X							
11	Output Diodes	M15454-24	4	X							
11a	M6x16 Combined Screw (Not Shown)	S28798-7	8	X							
11b	Electric Joint Compound (Not Shown)	NSS		X							
12	Reconnect Panel Link	T14190-1	4	X							
12a	M6x12 Combined Screw (Not Shown)	S28798-10	8	X							
13	Copper Strap	S27092-1	2	X							
14	Thermostat	T13359-26	1	X							
14a	M3x10 Combined Screw (Not Shown)	S28798-6	2	X							
15	Aluminum Bar	M24712-4	1	X							
15a	M6x12 Combined Screw (Not Shown)	S28798-10	1	X							
15b	M8x30 Hex Head Screw (Not Shown)	S26641-41	1	X							
15c	M8 Plain Washer (Not Shown)	S26638-4	2	X							
15d	M8 Lock Washer (Not Shown)	S26639-4	1	X							
15e	M8 Hex Nut (Not Shown)	S26640-4	1	X							
15f	Electric Joint Compound (Not Shown)	NSS		X							
16	Main Transformer Assembly	L15759-6	1	X							
16a	M5x16 Combined Screw (Not Shown)	S28798-5	4	X							
See next page for more.											

NOTE: Use only the parts marked "X" in the column under the heading number called for in the model index page.
NSS – Not Sold Separately

OPTIMARC® CV500P



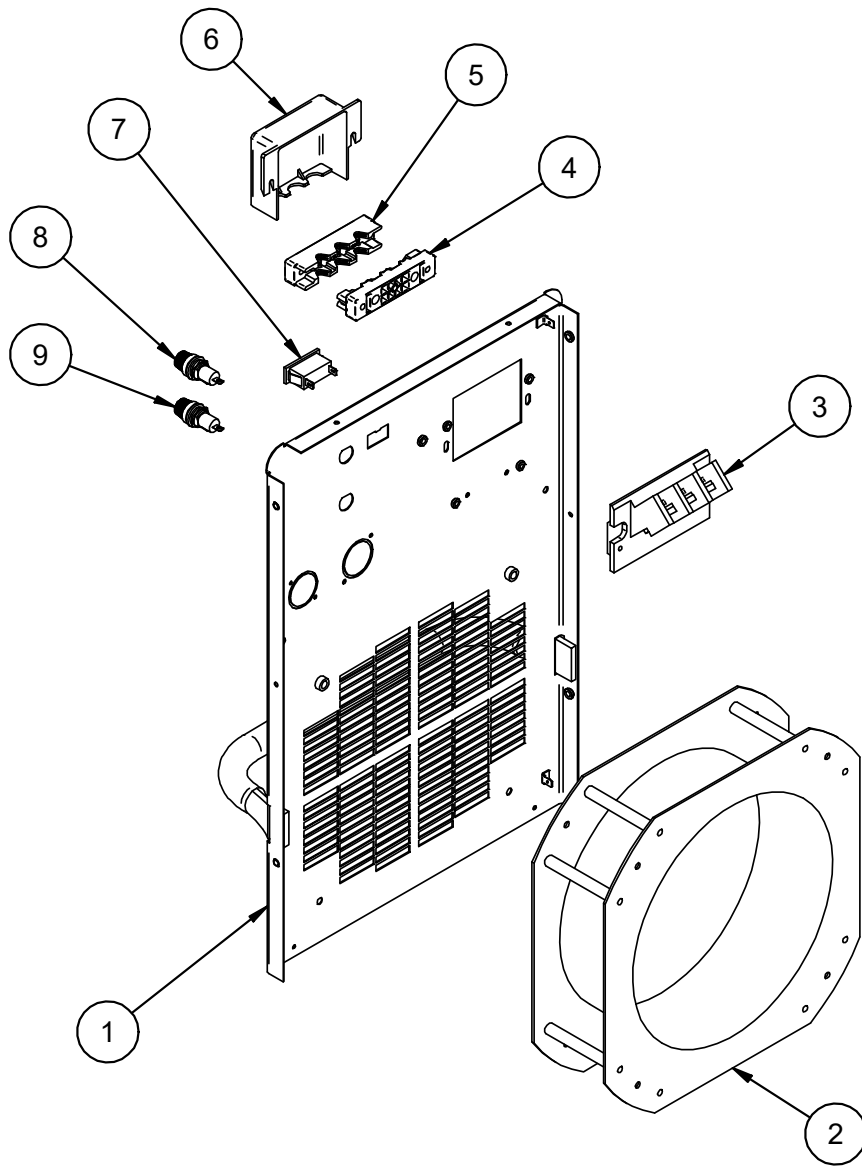
2018.03

(Continued)

ITEM	DESCRIPTION	PART NO.	QTY.	1					76343	1
17	Shunt	S26194-1	1	X					76344	1
17a	M8x40 Hex Head Screw (Not Shown)	S26641-9	2	X						
17b	M8 Plain Washer (Not Shown)	S26638-4	4	X						
17c	M8 Lock Washer (Not Shown)	S26639-4	2	X						
17d	M8 Hex Nut (Not Shown)	S26640-4	2	X						
17e	M3x12 Hex Head Screw (Not Shown)	S26641-1	2	X						
17f	M3 Plain Washer (Not Shown)	S26638-1	2	X						
17g	M3 Lock Washer (Not Shown)	S26639-1	2	X						
18	Copper Strap (Main Transformer to Shunt)	S27092-21	1	X						
18a	M8x25 Hex Head Screw (Not Shown)	S26641-8	1	X						
18b	M8 Plain Washer (Not Shown)	S26638-4	2	X						
18c	M8 Lock Washer (Not Shown)	S26639-4	1	X						
18d	M8 Hex Nut (Not Shown)	S26640-4	1	X						
19	MOV Assembly for Output (Not Shown)	S27147-4	1	X						
20	Thermostat Harness (Not Shown)	G6043-41	1	X						

NOTE: Use only the parts marked "X" in the column under the heading number called for in the model index page.

Index of Sub-Assemblies
 Sub Assembly Illustration
 Index of Sub-Assemblies
 Sub Assembly Illustration
 Index of Sub-Assemblies
 Sub Assembly Illustration
 Index of Sub-Assemblies
 Sub Assembly Illustration



Index of Sub-Assemblies
Part Numbers

Index of Sub-Assemblies
Part Numbers

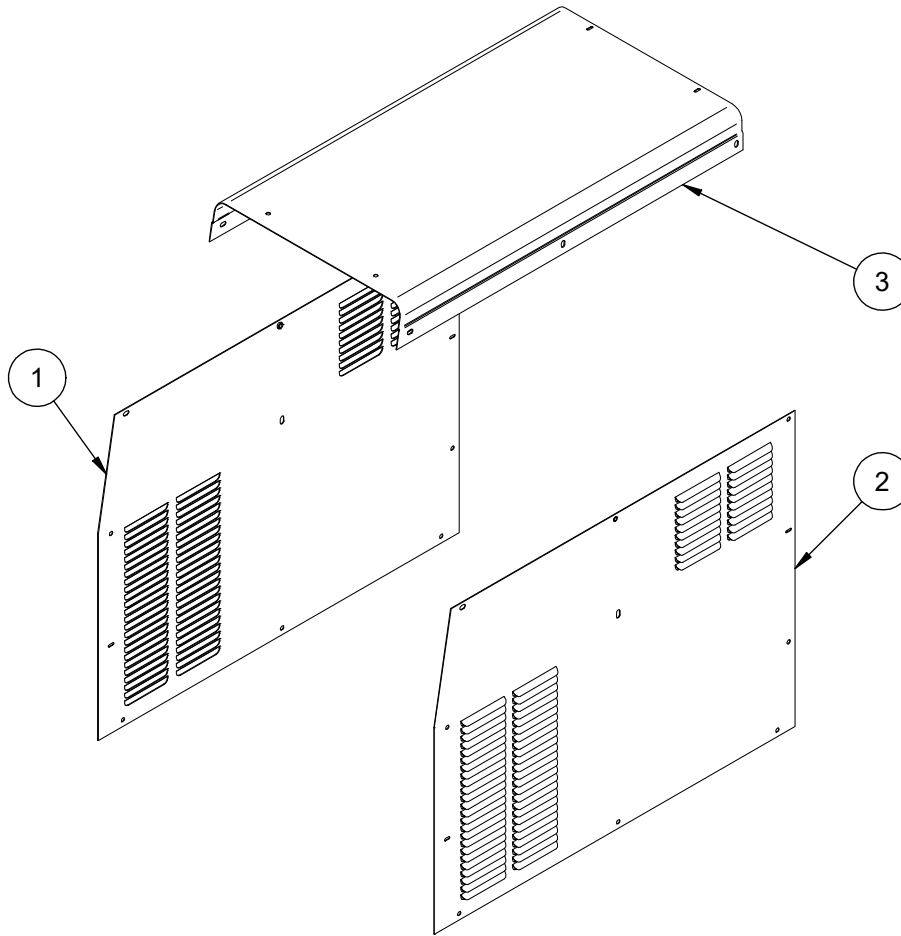
Index of Sub-Assemblies
Part Numbers

Index of Sub-Assemblies
Part Numbers

ITEM	DESCRIPTION	PART NO.	QTY.	1	2				76343	1
1	Case Back Welded Assembly	G5873-14	1	X	X				76344	2
1a	M5x12 Hex Washer Head Screw (Not Shown)	S26641-4	1	X	X					
1b	ST4.8x13 Hex Self Tapping Screw (Not Shown)	S26738-2	1	X	X					
2	Fan, Includes:	M22731-3	1	X	X					
2a	Fan Capacitor (Not Shown)	M22731-3-B	1	X	X					
2b	M5x30 Hex Head Screw (Not Shown)	S26641-6	4	X	X					
2c	M5 Plain Washer (Not Shown)	S26638-3	4	X	X					
2d	M5 Lock Washer (Not Shown)	S26639-3	4	X	X					
2e	M5 Hex Nut (Not Shown)	S26640-3	4	X	X					
2f	Fan Harness (Not Shown)	G6043-43	1	X	X					
3	Input Block	M20720-6	1	X	X					
3a	M4x16 Hex Washer Head Screw (Not Shown)	S26641-2	2	X	X					
3b	M4 Plain Washer (Not Shown)	S26638-2	4	X	X					
3c	M4 Lock Washer (Not Shown)	S26639-2	2	X	X					
3d	M4 Hex Nut (Not Shown)	S26640-2	2	X	X					
3e	Input Snubber Assembly (Not Shown)	S26781-2	1	X	X					
4	Cable Holder Base	M20720-5	1	X	X					
4a	M5x10 Combined Screw (Not Shown)	S28798-6	2	X	X					
5	Cable Holder Cover	M20720-4	1	X	X					
5a	M4x30 Hex Washer Head Screw (Not Shown)	S26641-3	2	X	X					
6	Input Supply Box	M20720-2	1	X	X					
6a	M4x30 Hex Washer Head Screw (Not Shown)	S26641-3	2	X	X					
6b	M4 Plain Washer (Not Shown)	S26638-2	2	X	X					
6c	M4 Lock Washer (Not Shown)	S26639-2	2	X	X					
7	Receptacle	S26506-2	1	X	X					
8	Fuse Holder	T12386-6	1	X	X					
8a	Fuse 2A (Not Shown)	T10728-20	1	X	-					
8a	Fuse 8A (Not Shown)	T10728-55	1	-	X					
8b	Decal, Heater And Fuse (Not Shown)	S26743	1	-	X					
8b	Decal, Heater And Fuse (Not Shown)	S26743-2	1	X	-					
9	Fuse Holder	T12386-6	1	X	X					
9a	Fuse 8A (Not Shown)	T10728-55	1	X	X					
9b	Decal, 8A Fuse (Not Shown)	S26743-15	1	-	X					
9b	Decal, 8A Fuse (Not Shown)	S26743-18	1	X	-					
10	Decal, Connection Diagram (Not Shown)	S26724	1	-	X					
10	Decal, Connection Diagram (Not Shown)	S26724-1	1	X	-					
11	Ground Decal (Not Shown)	S26732	1	X	X					

NOTE: Use only the parts marked "X" in the column under the heading number called for in the model index page.

Index of Sub-Assemblies
 Sub Assembly Illustration
 Index of Sub-Assemblies
 Sub Assembly Illustration
 Index of Sub-Assemblies
 Sub Assembly Illustration
 Index of Sub-Assemblies
 Sub Assembly Illustration



OPTIMARC® CV500P



ITEM	DESCRIPTION	PART NO.	QTY.	1					76343	1
1	Left Case Side	G5879-7	1	X					76344	1
1a	M5x12 Hex Washer Head Screw (Not Shown)	S26641-4	6	X						
1b	ST4.8x13 Hex Self Tapping Screw (Not Shown)	S26738-2	2	X						
2	Right Case Side	G5880-8	1	X						
2a	M5x12 Hex Washer Head Screw (Not Shown)	S26641-4	6	X						
2b	ST4.8x13 Hex Self Tapping Screw (Not Shown)	S26738-2	2	X						
3	Roof Welded Assembly	G5878-5	1	X						
3a	M5x12 Hex Washer Head Screw (Not Shown)	S26641-4	8	X						
3b	ST4.8x13 Hex Self Tapping Screw (Not Shown)	S26738-2	2	X						

NOTE: Use only the parts marked "X" in the column under the heading number called for in the model index page.

Index of Sub-Assemblies
 Sub Assembly Illustration
 Index of Sub-Assemblies
 Sub Assembly Illustration
 Index of Sub-Assemblies
 Sub Assembly Illustration
 Index of Sub-Assemblies
 Sub Assembly Illustration