

PARTS LIST FOR POWERCRAFT® PC40

Index of Sub Assemblies
Illustration of Sub Assemblies
Index of Sub Assemblies
Illustration of Sub Assemblies
Index of Sub Assemblies
Illustration of Sub Assemblies
Index of Sub Assemblies
Illustration of Sub Assemblies



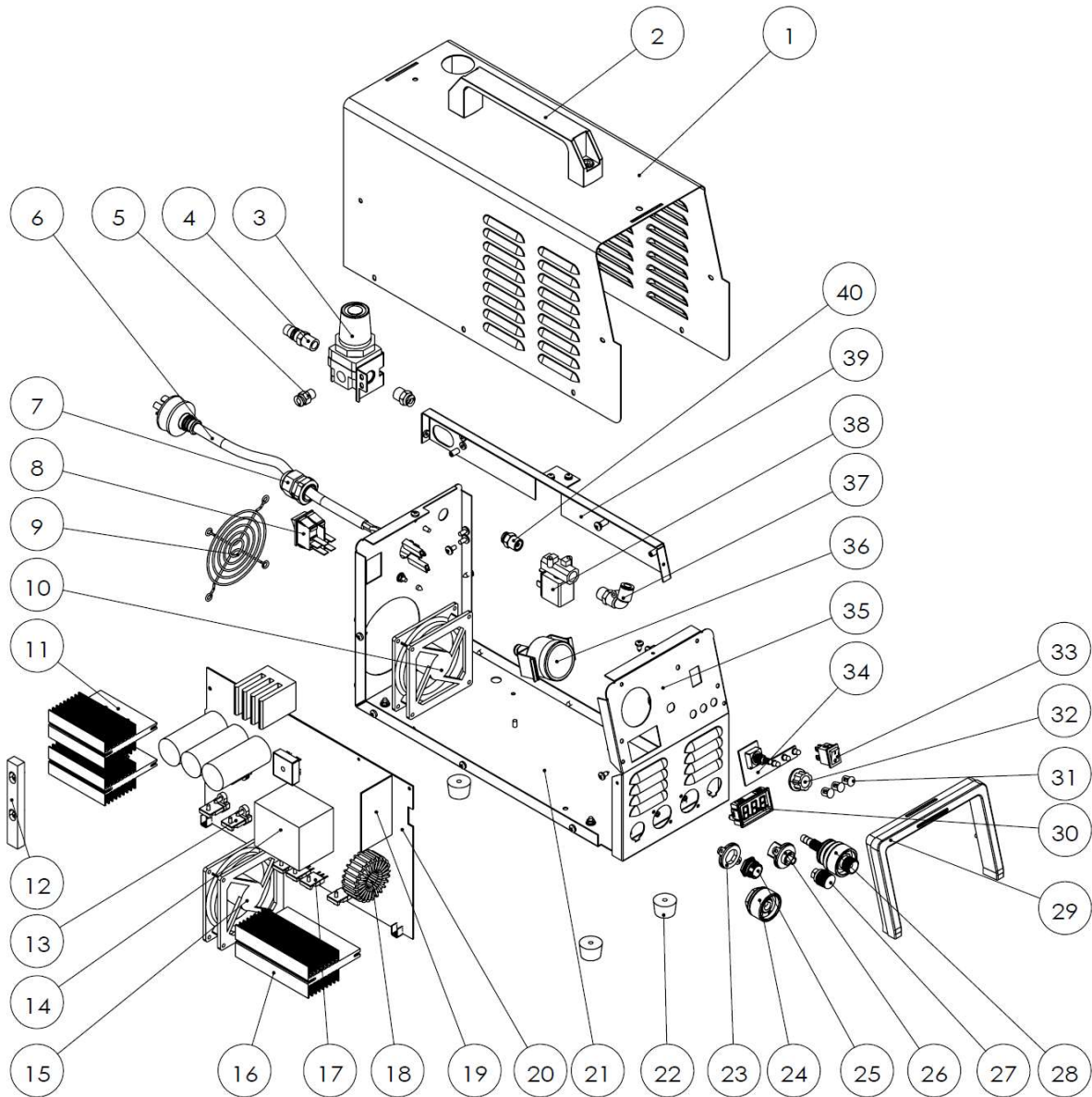
POWERCRAFT® PC40
For code: 76269

Do Not use this Parts List for a machine if its code number is not listed. For any code numbers not listed, contact the Service Department via: china_service@lincolnelectric.com.

Use the table below to determine which sub assembly page and column the desired part is located on for your particular code machine.

SUB ASSEMBLY ITEM NO. →	I				
SUB ASSEMBLY PAGE NAME →	Machine Assembly				
PAGE NO. →	PB-1				
CODE NO. ↓					
76269	1				

Illustration of Sub Assemblies



ITEM	DESCRIPTION	PART NO.	QTY.	1						76269	1
1	Top Housing	L16440-20	1	X							
2	Handle	M22544-5	1	X							
3	Air Regulator	M22745-2	1	X							
4	Quick Joint	M22415-17	1	X							
5	Tube Connector	M22415-20	1	X							
6	Power Cable	M22276-17	1	X							
7	Cable Clip	S28106-1	1	X							
8	Switch	S26343-7	1	X							
9	Fan Cover	M24933-5	1	X							
10	Fan	M24923-5	1	X							
11	IGBT Radiator	M24710-15	2	X							
12	Radiator Support Bar	S27067-2	1	X							
13	IGBT	S27012-6	4	X							
14	Transformer	S27308-3	1	X							
15	Fan Assembly	M24923-3	1	X							
16	Rectifier Tube Radiator	M24713-3	1	X							
17	Fast Recovery Diode	S31886	4	X							
18	Inductance	S28559-1	1	X							
19	Control PCB	M22417-30	1	X							
20	Power System	M24922-11	1	X							
21	Bottom Plate	L16441-9	1	X							
22	Foot	S26787-16	4	X							
23	Insulation Pad	M24696-6	1	X							
24	Quick Connector Subassembly	M22415-15	1	X							
25	Air Outlet	S26909-5	1	X							
26	ARC Terminal Cushion	M25452	1	X							
27	ARC Terminal Nut	M25453	1	X							
28	Quick Connector Subassembly	M22415-16	1	X							
29	Front Plastic Surface Box	M24925-4	1	X							
30	Digital Display	M22736-2	1	X							
31	Shade	S31887	3	X							
32	KNOB KIT	S28748-5	1	X							
33	Switch	S26343-8	1	X							
34	Front PCB Ass-y	S29841-7	1	X							
35	Front Panel	L16442-12	1	X							
36	Regulator Gauge	M22736-3	1	X							
37	tube Connector	M22415-18	1	X							
38	Solenoid Valve	M22042-9	1	X							
39	Beam	M25451	1	X							
40	Tube Connector	M22415-19	2	X							

NOTE: Use only the parts marked "X" in the column under the heading number called for in the model index page.